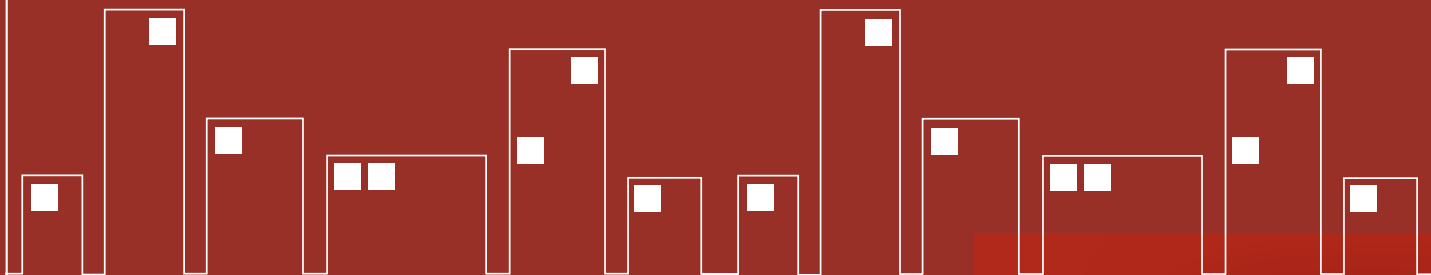


ACCOMMODATION AT BROOKES



**2011/
2012**



ACCOMMODATION AT BROOKES 2011/12

At Brookes we understand that when you live away from home it's important to be somewhere that you feel comfortable and safe. If you are moving to Oxford, finding accommodation before you arrive is essential.

This booklet contains information on the accommodation available to students at Oxford Brookes University, advice on how to apply and arranging somewhere to live in Oxford.

Information provided in this booklet is correct at time of going to press (March 2011), but may be subject to change.

CONTENTS

- 4 General Information
- 5 Halls in detail
- 15 Hall facilities
- 16 Where you'll live
- 17 Hall allocation policy
- 23 How to apply
- 25 Application and decision process
- 26 The Brookes Experience
- 27 Other types of accommodation
- 30 Students' Union advice

Halls of residence

The majority of hall accommodation at Brookes is less than 10 years old. There are over **3,400 single study-bedrooms, most of which are en suite**. You can choose between catered and self-catered accommodation.

There are halls of residence on each of the three campuses as well as in the popular student area of east Oxford. The Brookes Bus connects campuses, halls and the city centre – all students living in halls get a free bus pass.

Life in halls

Living in halls is simply **one of the best ways to meet new people** and make friends. Most students in halls are first-years. There is also accommodation set aside for mature students and postgraduates. Students come to Brookes from all over the world so you'll experience a real mix of cultures and nationalities.

"I loved living in halls – **the sense of community is amazing**. It's nice because you get to know so many people, and you bond with your housemates really quickly." Samantha Winter, studying Religion and Theology with Education

Your accommodation

Your bedroom will be furnished with a bed-base and mattress, desk and chair, reading lamp, wardrobe and curtains. **Study-bedrooms are all networked** so you can gain access to the internet, intranet, email and the directories where course materials are stored. Internet is included within the cost of the rent.

You may be shown the outside of a hall during a visit day or campus tour. A video of the inside of a student room is shown during visit days. There are **360° photos of typical rooms and communal areas at www.brookes.ac.uk/accommodation**

Guarantee your place in a hall

Your hall place will be guaranteed if you **make Oxford Brookes University your firm choice** and select a minimum of five halls.

Students with certain disabilities or who are under the age of eighteen (on 30 September 2011) will be given preference on their type of choice. There are also exceptions to the five halls minimum rule for students doing courses which have longer semesters. For details of our hall allocation policy please see page 17.

Improving facilities

Brookes is committed to improving facilities for students and staff, and major building and refurbishment plans are underway. These will lead to **great new spaces for teaching and learning**, as well as social areas, during your time at Brookes.

Some disruptions associated with the ongoing refurbishment and improvement programmes are inevitable, but we will work hard to minimise any inconvenience to students.

Contacting us

Brookes' accommodation office is located in the Helena Kennedy Student Centre on Headington Hill Campus. Please do not hesitate to contact us if you have any queries or difficulties.

Tel: 01865 484660

Fax: 01865 484618

email: accomm@brookes.ac.uk

www.brookes.ac.uk/accommodation

We are open Monday to Friday, 9.30am – 4.30pm.

Late night opening to 7.00pm on one evening a week during semester time.

A woman with long dark hair, wearing a light-colored jacket over a patterned top and grey trousers, is walking towards the camera on a paved path. She has a yellow bag slung across her chest. The background features a two-story brick building with several windows and doors, and trees with yellowing autumn leaves. The scene is brightly lit, suggesting a sunny day.

HALLS IN DETAIL

A 360 degree photo of a typical room and communal area can be seen by visiting www.brookes.ac.uk/studying/accommodation and clicking on the Halls of Residence link, then click on the hall of your choice to view a room and communal area.

Note: the rooms shown are typical and some rooms may differ from the photo shown. Also note that duvets, pillows and bed linen are not provided at any hall.



CHENEY STUDENT VILLAGE SELF-CATERED EN SUITE

Cheney Lane, Headington, Oxford OX3 0BD
Situated on Headington Campus.

- Well appointed modern self-catering en suite residential hall offering a 50 week contract comprising of cluster flats of 5/6 with shared kitchen/dining rooms. Ideally located next to the Sports Centre and close to the Student Union.
- 750 single study bedrooms.
- 2.65m x 4.10m (typical room size including shower room).
- On-site launderette.
- Common room.
- £122.75 per week for 50 weeks (includes heating and lighting).
- The hall office is available as a source of advice and information.
- Damage deposit of £200.





CLIVE BOOTH STUDENT VILLAGE SELF-CATERED EN SUITE

John Garne Way, Oxford OX3 0FN

Situated on Headington Campus.

This hall is ideally situated close to Headington Campus and full Student Union facilities such as on-site bar.

- Self-catering accommodation arranged in flats of 5/6, en suite bedrooms, with shared kitchen/dining rooms.
- 792 single study bedrooms, plus 12 two bedroom self-contained flats.
- 2.70m x 4.50m (typical room size including shower room).
- On-site launderette.
- On-site computer room.
- On-site bar and entertainment area.
- £136.86 per week for 38 weeks (includes heating and lighting).
- The hall office is available as a source of advice and information.





CLIVE BOOTH STUDENT VILLAGE SELF-CATERED

John Garne Way, Oxford OX3 0FN

Situated on Headington Campus.

This hall is ideally situated close to Headington Campus and full Student Union facilities such as on-site bar.

- Self-catering, kitchens and bathrooms allocated to groups of 5/6 in self-contained flats.
- 455 single study bedrooms.
- 3.20m x 2.40m (typical room size).
- On-site launderette.
- On-site computer room.
- On-site bar and entertainment area.
- £114.44 per week (with sinks) for 38 weeks (includes heating and lighting).
£109.18 per week (without sinks) for 38 weeks (includes heating and lighting)
- The hall office is available as a source of advice and information.



CLIVE BOOTH STUDENT VILLAGE

POSTGRADUATE CENTRE

SELF-CATERED EN SUITE

John Garne Way, Oxford OX3 0FN
Situated on Headington Campus.

Dedicated Postgraduate Centre 1-6 bedroom apartments including studio flats and 1 and 2 bedroom apartments. It is a well designed innovative and modern space. Including communal areas for shared kitchen and dining room with social building and attractive central courtyard.

This hall offers both 38 and 50 week contracts (subject to availability) and is ideally situated close to Headington Campus and full SU facilities such as on-site bar.

- Self-catering, kitchens and shower rooms with 3/4/5/6 of 5/6 in self-contained flats.
- Pots, pans and cutlery included
- 249 single study bedrooms, plus limited number of studio flats
- 2.70m x 4.50m (typical single occupancy room size shower room).
- On-site launderette.
- On-site computer room.
- On-site bar and entertainment area.
- The hall office is available as a source of advice and information.
- From £137.86 per week for cluster flats for 38 weeks or 50 week contract (includes heating and lighting)





CRESCENT HALL

SELF-CATERED

Crescent Road, Temple Cowley, Oxford, OX4 2NS
Approximately two miles from Headington Campus on a university bus route serving Oxford city centre and the vibrant Cowley Road known for its lively and diverse cafe culture.

- Self-catering, kitchens and bathrooms allocated to groups of 6/7.
- 306 single study bedrooms each with a hand basin.
- 2.30m x 3.65m (typical room size).
- On-site launderette.
- £93.73 per week for 38 weeks (includes heating and lighting).
- Computer room.
- A direct university bus service links the hall with Headington Campus and Oxford City centre (reduced bus service during vacations). There is now a U5X bus route which connects Crescent with the Wheatley Campus.
- The hall office is available as a source of advice and information.

The weekly price shown is based on standard contract length (38 weeks). For courses such as Art Foundation, Nursing, LPC and GDL requiring additional weeks the cost will be increased accordingly to fit the contract length.



We currently have building works to extend Harcourt Hill. The work is on a separate area so should not cause too much disturbance but please be aware some noise and disruption is unavoidable.

HARCOURT HILL HALL CATERED

Westminster Institute of Education, Botley, Oxford OX2 9AT
Situating in the grounds of the university's Westminster Institute of Education in Botley, approximately five miles from Headington Campus. This accommodation may appeal especially to students within the institute who wish to live and study on the same campus.

- Catered during semesters – breakfast and dinner weekdays, breakfast Saturdays and breakfast and lunch Sundays (no refunds will be made for meals not taken). There is provision in each house for preparing snacks.
- On-site sports hall, swimming pool, common room, bar and chapel. The site also has a library and 24-hour access computer room and launderette.
- 264 single study bedrooms, sharing kitchen and bathrooms in groups of 11.
- 4.00m x 3.00m (typical room size).
- The hall office is available as a source of advice and information.
- A direct university bus service links the campus with Headington and Wheatley campuses and Oxford city centre (reduced bus service during vacations).
- £127.54 (approx) for 38 weeks (includes heating and lighting, and meals during semester time).
- Early accommodation and extended meal packages for PGCE students staying at Harcourt Hill will be arranged.

The weekly price shown is based on standard contract length (38 weeks). For the PGCE and BA Primary courses requiring additional weeks and catering the cost will be increased accordingly to fit the contract length.



LADY SPENCER CHURCHILL HALL CATERED

Wheatley, Oxford OX33 1HX

Situated in the grounds of Wheatley Campus. Set in leafy, greenbelt, 70 acre campus with excellent outdoor sports facilities including tennis courts and all weather football pitches. Although set on the outskirts of Oxford it has excellent transport links to Oxford city centre.

- Catered during semesters – breakfast and dinner weekdays, breakfast Saturdays and breakfast and lunch Sundays (no refunds will be made for meals not taken). There is provision on each floor for preparing snacks.
- 162 single study bedrooms accommodated in four blocks.
- 2.74m x 3.96m (typical room size).
- On-site launderette.
- Library has a 24-hour access computer room.
- Common room.
- The hall office is available as a source of advice and information.
- A direct university bus service links the campus with Headington and Harcourt Hill campuses and Oxford city centre (reduced bus service during vacations).
- £127.54 (approx) for 38 weeks (includes heating and lighting, and meals during semester time).





PAUL KENT HALL

SELF-CATERED MOSTLY EN SUITE

James Wolfe Road, Headington, Oxford OX3 2WA
Approximately 1.5 miles from Headington Campus, on a direct university bus route serving Oxford city centre and the vibrant Cowley Road known for its lively and diverse café culture

- Self-catering, mostly en suite, kitchens allocated to groups of 6/9.
- 242 single study bedrooms in self-contained flats. Most rooms have en suite shower and toilet facilities.
- 5.00m x 2.00m (typical room size including shower room).
- On-site launderette.
- On-site common room.
- On-site computer room.
- The hall office is available as a source of advice and information.
- A university bus service links the hall with Headington campuses and Oxford City centre (reduced bus service during vacations). There is now a U5X bus route which connects Paul Kent with the Wheatley Campus.
- £119.04 per week for 38 weeks (for en suite room) includes heating and lighting.
£108.74 per week for 38 weeks (for room with shared bathroom) includes heating and lighting.



The prices shown are based on standard contract length (38 weeks) and for the courses such as Art Foundation, Nursing, LPC and GDL requiring additional weeks the cost will be increased accordingly to fit the contract length.



WARNEFORD HALL

SELF-CATERED

Roosevelt Drive, Headington, Oxford OX3 7XA
Approximately 0.25 miles from Headington Campus.
Ideally located with a 5 minute walk to Headington Campus, leisure and sports facilities close by and on a direct university bus route serving Oxford city centre and the vibrant Cowley Road known for its lively and diverse café culture.

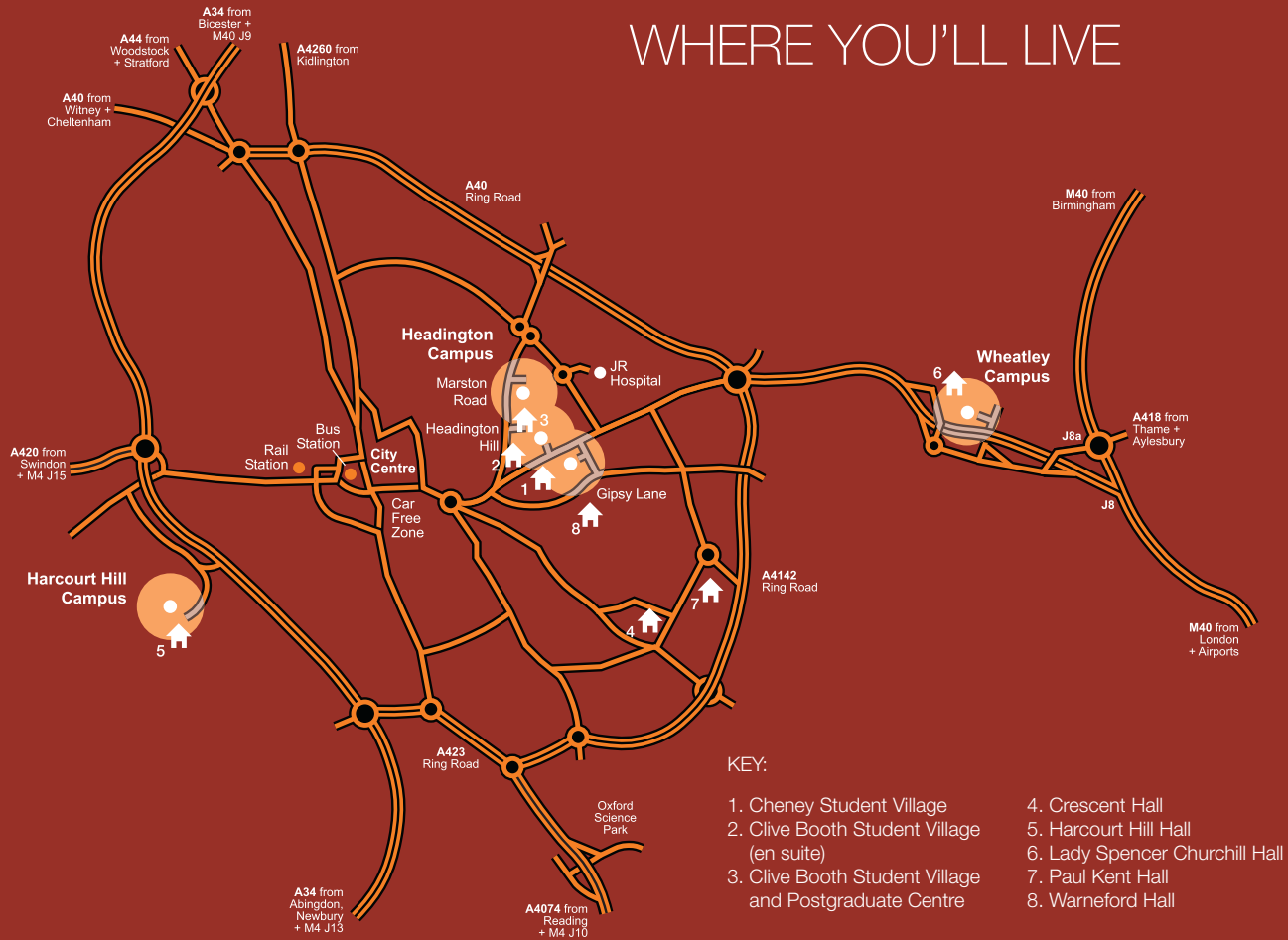
- Self-catering kitchens and showers allocated to groups of 6 (occasionally 3 or 5).
- 252 single study bedrooms in self-contained flats.
- 2.43m x 3.35m (typical room size).
- On-site launderette.
- £114.44 per week for 38 weeks (includes heating and lighting).
- The hall office is available as a source of advice and information.



HALL FACILITIES

	Cheney	Clive Booth	Clive Booth PG	Clive Booth non-en suite	Crescent	Harcourt Hill	Lady Spencer Churchill	Paul Kent	Warneford
Number of rooms	750	792	388	455	306	264	162	242	252
En suite	✓	✓	✓					✓ (most)	
Wash hand basins				✓ (most)	✓	✓	✓		✓
Internet access	✓	✓	✓	✓	✓	✓	✓	✓	✓
Telephone in room	✓	✓		✓	✓		✓	✓	
Catered						✓	✓		
50 week contract	✓		✓						
38 week contract		✓	✓	✓	✓	✓	✓	✓	✓
46 week contract (health care)					✓			✓	
Early start (Art foundation)					✓			✓	
39 week contract (Legal Practice and Graduate Diploma in Law)					✓			✓	
Extended contracts for PGCE students						✓			
Includes blocks for postgraduate and mature students only	✓		✓		✓	✓	✓		

WHERE YOU'LL LIVE



HALL ALLOCATION POLICY

Hall places will be guaranteed if you make Oxford Brookes University your firm choice, and select a minimum of 5 halls* (exceptions) subject to you holding an unconditional offer. The guarantee only applies for students whose application to the University and hall have been duly processed by the Admission Office and are unconditional at the closing date for hall applications.

If you do not select Brookes as your firm choice you should still apply for accommodation by the agreed deadline and in the event that you accept your offer may still be offered accommodation. However, we can give no guarantee that this will be in a hall of your preferred choice and there may be a short delay at the beginning of the semester before moving into halls.

*Exceptions to the 5 hall minimum choice: PGCE / Nursing / Art Foundation / Legal Practice Course and Graduate Diploma in Law students (see application process)

Exceptions to the Allocation Policy include:

- Students with certain disabilities
- Students who will be under the age of 18 on 30 September 2011.

If you fit either of the categories above you will be offered a room in one of the hall types of your choice. If your place at the university is conditional at the time of the July allocation your hall application will be entered into the allocation process that takes place towards the end of August and will be subject to the allocation criteria set out in this handbook.

Medical conditions

If you wish to have a medical condition taken into account for hall allocation purposes you must supply the following with your paper application (do not use the online process). Please contact the Accommodation Office on 01865 484660 or email medicalhallapplications@brookes.ac.uk to request a form.

- A letter confirming your condition written in English from a certified medical practitioner; it is insufficient for this letter

to simply state your condition. It must also support your need to be accommodated in any or a specific type of residence. If you do not provide this information with your initial application it will not be possible to consider any information supplied at a later date. If you are unsure please call or email us at the Accommodation Office.

Health Care students

Please be aware some nursing courses have different semester dates to other programmes of study and therefore require extended contract lengths. These courses are shown below:

- Adult Nursing Degree and Diploma
- Childrens Nursing Degree (pre-registration only)
- Mental Health Nursing Degree (pre-registration only) and Diploma
- Midwifery (pre-registration only).

The prices and dates for these courses are shown below:

- Crescent Hall from Saturday 17 September to 27 July 2012 at a cost of £4,217.85
- Paul Kent Hall from Saturday 17 September to 27 July 2012 at a cost of £5,358.15
- Alternatively you may prefer Cheney Student Village from Saturday 17 September to the 31 August 2012 at a cost of £6,137.50 plus £200 deposit.

The above arrangements are not intended for those nursing students based at Swindon.

Any students who require the use of a car for placements such as paramedic / nursing students may wish to consider shared housing as an option. You can apply as a group or individual. If you choose to live in halls keeping or using a car within Oxford city is NOT permitted. Please contact us on 01865 484617.

Art Foundation students

Please be aware the Art Foundation course has different semester dates to other courses and therefore extended contract lengths and costs as shown below:

- Crescent Hall from Saturday 3 September 2011 to 18 June 2012 at a cost of £3,883.10
- Paul Kent Hall from Saturday 3 September 2011 to 18 June 2012 at a cost of £4,931.60.

You may also wish to consider taking a room in Oxford Brookes University shared housing. These contracts begin on Saturday 3 September 2011.

PGCE and BA Primary students

Please be aware that the PGCE and BA Primary course have different semester dates to other courses and provision in hall for these different dates is ONLY made at Harcourt Hill Hall. The extended contract lengths and costs are shown below.

- PGCE Primary starts Saturday 3 September 2011 to 7 July 2012 at a cost of £5,624.64
- PGCE Secondary (one year) starts Saturday 10 September 2011 to 29 June 2012 at a cost of £5,345.96

- PGCE Secondary (two year) starts Saturday 17 September 2011 to 16 June 2012 at a cost of £4,969.86
- PGCE Post Compulsory starts Saturday 17 September 2011 to 23 June 2012 at a cost of £5,102.75
- BA Primary starts Saturday 17 September 2011 to 23 June 2012 at a cost of £5,102.75.

LPC and GDL students (Legal Practice Course and Graduate in Diploma Law)

Please be aware the LPC and GDL courses have different semester dates to other courses and therefore extended contract lengths and costs as shown below:

- Crescent Hall from Saturday 17 September 2011 to 18 June 2012 at a cost of £3,695.64
- Paul Kent Hall from Saturday 17 September 2011 to 18 June 2012 at a cost of £4,693.58
- Alternatively you may prefer Clive Booth Hall Postgraduate Centre (50 weeks) from Saturday 17 September 2011 to 31 August 2012 at a cost of £6,893.00.

Mature first year students

If you wish to share hall accommodation with other mature and postgraduate students you can apply for a room in Crescent Hall, the Postgraduate Centre (Clive Booth Student Village), Lady Spencer Churchill Hall, Harcourt Hill Hall or Cheney Student Village. A number of rooms in these halls will be provisionally set aside for those seeking to share with other mature or postgraduate students. All deadlines published in this handbook apply.

You may apply to halls other than those listed above but there is no guarantee that you will be sharing with other mature or postgraduate students.

Harcourt Hill and Wheatley students

If you are following a course taught at either the Harcourt Hill Campus or the Wheatley Campus the accommodation at these sites may be of particular interest.

If you don't get a place

Ideally we would wish to accommodate all our new students (who want a place) in halls. Inevitably some people will be disappointed. The Accommodation Office

will do all it can to support students through this process.

If we are unable to assist you with a hall place initially, you will be invited to join the hall waiting list. Details about the waiting list, as well as alternative accommodation, will be mailed to hall applicants who were not allocated a hall place of their choice in the main August allocation.

Your contract

All contracts will commence on the date printed on your agreement. Please do not arrive before the date shown as you will not be allowed access to the accommodation. Details of arrival times will be sent to you with your licence agreement.

When accepting an offer of a hall place, in most cases you enter into an agreement to take the place from Saturday 17 September 2011 to Thursday 7 June 2012 inclusive. This means that you have full use of your room during the Christmas and Easter vacations (no meals are provided during vacations in catered halls). The exceptions are Cheney Student Village where agreements are for 50 weeks (occupation dates for this hall are Saturday

17 September 2010 to Friday 31 August 2012 inclusive) and those Nursing, Art Foundation, PGCE and Law students who live in the halls specified.

The contract for your room is binding for the period stated on your licence. If you wish to leave hall it is essential to notify the Accommodation Office. You will remain liable for the payment of this room until it has been re-let.

***Please note:** if you choose Cheney Student Village as one of your options and are offered a place it will not be possible to alter your offer on the grounds of expense. Remember, Cheney Student Village and some of Clive Booth Postgraduate Centre contracts are for 50 weeks. Please be sure before you apply.

We would like to point out that any accommodation contract for halls is made between the university and the student occupier. While we understand that parents or other representatives of the student will be concerned for their well being, due to the Data Protection Act our dealings need to be with the residents. Past experience strongly suggests this is the most efficient way of resolving any problems that may arise.



I like living in halls – my flatmates are amazing, I love my flatmates! I'm living with people doing publishing, international business and nutrition. I don't think I would have met these people if I wasn't living in the halls.

Annabel Chung,
studying Business Management and Law

Postgraduate accommodation

A proportion of accommodation in halls will be allocated to postgraduate and mature students. Self-catered rooms will be available at Crescent Hall, Postgraduate Centre (Clive Booth Student village) and Cheney Student Village. Catered accommodation for postgraduate students will be available at Lady Spencer Churchill Hall and Harcourt Hill Hall. These halls, with the exception of Cheney Student Village, and the Postgraduate Centre are available as a 38 week standard letting period only. If you require a 50 week letting period you will need to apply to Cheney Student Village, or Postgraduate Centre (Clive Booth Student Village) which have a limited number of 50 week contracts available. Please note; the normal allocation criteria will also apply to postgraduate students.

Cars

It is a requirement of Oxford City Council and a condition of your residency at all halls that you do not keep a car with you in Oxford. You will find that a car is really not necessary as Oxford has excellent transport links to the rest of the country, especially London, and very good public transport within the city.

Data lines

Data lines are installed in all student rooms in the halls of residence. Residents will be able to use their own PCs to access email, internet and intranet. Internet is included within the cost of the rent.

Hall regulations

Regulations are in place to help establish and maintain a satisfactory quality of community life and residents are expected to abide by them. They can be viewed online by going to: www.brookes.ac.uk/studying/accommodation/regulations. Responsibility for the welfare and behaviour of residents rests with the Hall Manager.

Accommodation after your first year

We are able to offer 'continuing' students accommodation after the first year in Shared Housing and/or in nominated residential halls in partnership with a2 dominion such as Sinnet Court, Champneys and Edna Rose, and in partnership with CRM-student at Slade Park Apartments, where you can apply as a individual or as a group. See page 27 for further details.



HOW TO APPLY

Online application

You will be sent a letter and personal password for online application. You can make your accommodation choices directly if you use this method. Please enter the password exactly as seen (mix of lower and upper case) using applicant number (9 digits)/UCAS ukpass personal ID number (10 digits) without breaks or dashes. **IMPORTANT** Please keep your password in a safe place. If you lose this password it will not be possible to supply you with another. For students who wish to make a paper application please contact the Accommodation Office on 01865 484660 or email hallapplications@brookes.ac.uk to request an application form.

If you require a medical condition to be considered you **MUST** submit a paper application. To request an accommodation handbook and application form please contact the office on 01865 484665 or email medicalhallapplications@brookes.ac.uk

Students holding unconditional offers

If you have firmly accepted an unconditional offer (ie you are not awaiting any exam results, CRB/medical checks etc) you may apply to Oxford Brookes University for an early decision on your hall application.

Please note: It is normal for unconditional offers to be made after the 1st July 2011 deadline. If you have not received your offer or brochure by the deadline your application will be entered into the main allocation at the end of August.

Decision on your application

You will be informed of the outcome of your application during July 2011 if we receive your application and your status is unconditional on or before 1 July 2011. All others will be notified by early September 2011. You will receive the accommodation information from the Admission Office between April and June. Students receiving unconditional offers before 1 July 2011 complete and return hall application or apply online by 1 July 2011.

Contracts to occupy a room in hall will be sent in July 2011 and must be returned by 10 August 2011. Any contracts not returned will be terminated after 10 August 2011.

Students holding conditional offers

If you are awaiting exam results in order to transform a conditional offer to an unconditional one you can apply for a hall place by the following steps:

- You will receive the accommodation information from April 2011.
- Decisions on the allocation of hall places are communicated to students in early September 2011.

Other essential information

The address to which you must return the hall application form is:

**Accommodation Office
Oxford Brookes University
Helena Kennedy Student Centre
Headington Campus
Oxford
OX3 0BP**

Please read the following paragraph very carefully:

Decision on your application

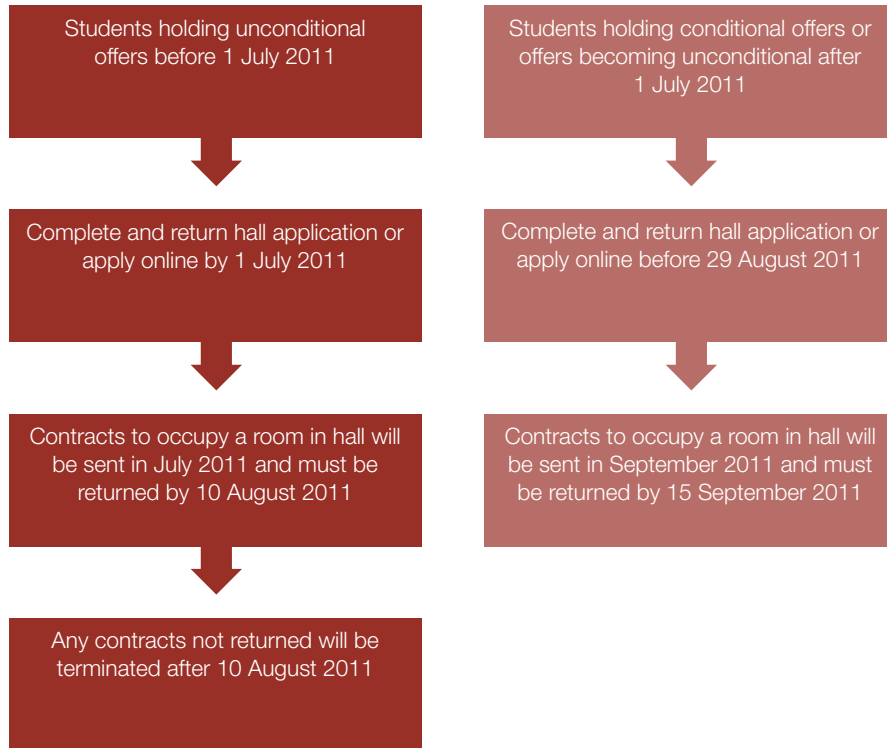
You will be informed of the outcome of your application at the beginning of September 2011. Important: If you do not wish to accept the offer made for accommodation YOU MUST advise the accommodation immediately in order for us to maximise use of rooms. Please note we are unable to make a change to the offer made. From the end of October, a process will be in place to facilitate possible room transfers.



Halls are a great way to get to know people in first year. I was in a flat with six other people with a communal kitchen. You can also meet other people in different flats. First year is all about getting to know as many people as you can.

Nick Wyke
studying City and Regional Planning

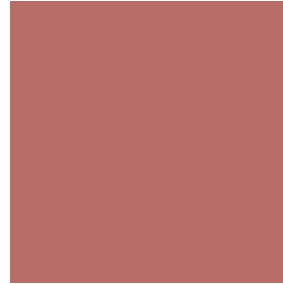
APPLICATION AND DECISION PROCESS



Please note that all of the above is dependent on your status being unconditional as processed by the Admissions Office at the time of the relevant allocation.

Discover the **Brookes** **Experience**

To keep up to date with the latest information, news and events, and to connect with current and future students, become part of the Oxford Brookes social network communities.



**Join us on
Facebook:**

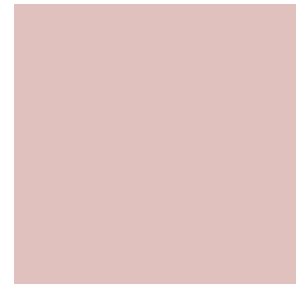
[www.facebook.com/
oxfordbrookes](http://www.facebook.com/oxfordbrookes)

**Follow us on
Twitter:**

[www.twitter.com/
oxford_brookes](http://www.twitter.com/oxford_brookes)

**Subscribe to our
YouTube channel:**

[www.youtube.com/
oxfordbrookes](http://www.youtube.com/oxfordbrookes)



OTHER TYPES OF ACCOMMODATION



Living in the private sector

Information relating to other possible sources of private rented accommodation is available from the Accommodation Office, please email or telephone to request details or go to www.brookes.ac.uk/students/accommodation

Brookes University managed housing scheme

If you are interested in living in other kinds of off-campus accommodation, the university managed housing scheme offers about 400 places in shared houses leased from private landlords.

The houses are fully furnished but you provide your own bed linen, utensils and cutlery. A typical average weekly rent is about £83 per week. Heating and lighting charges are additional to this figure. A non-refundable booking fee of £226 will be required before contracts will be issued. No other deposits are required.

Application forms are available from the Accommodation Office in spring.

First allocations are made during Semester 2 to groups of students who wish to share accommodation but later applications can be considered, especially from mature freshers who are prepared to live in groups which function as single households.

Agreements are for 46 or 50 weeks beginning on 3 September 2011.

These properties are popular with students who wish to live as a group constituting a household. If you are interested, you should apply as soon as you have a firm place on a course. If you wish to view properties you should telephone first: call 01865 484617 to obtain a list of available properties.

There is limited amount of accommodation in these properties for couples or for those who are single parents, but not for larger families. If you are coming to Oxford with your family it is essential that you make arrangements in advance.

Nominated Residential Halls

You can also apply to live in a nominated residential halls for continuing students. Oxford Brookes work in partnership with a2dominion and have nominations right to Sinnet Court, Champney and Edna Rose purpose built residential halls with approx 250 ensuite rooms across the three sites.

The university, in partnership with CRM Ltd, are able to offer accommodation at the 'Slade Park Apartments' development. Slade Park Apartments offer single ensuite rooms in flats of 4, 5 and 6 people sharing

a kitchen and lounge area and finished to an extremely high standard. Included in the development are 24 high-quality self-contained studio apartments.

A booking fee is required when securing this type of accommodation. Please refer to our website: www.brookes.ac.uk/accommodation for further details.

Private flats

Most leases for private rentals begin in the summer vacation and a damage deposit and one month's rent in advance is usually required. Visits to Oxford will be necessary to secure this type of accommodation.

Advice

Before signing any agreement, please make sure you are certain of its implications. Information on tenancy agreements, landlord problems or any other housing matter is available from the Students' Union Advice Centre, Helena Kennedy Student Centre, Headington Campus. Telephone 01865 484770 or email: suadvice@brookes.ac.uk Advice is also offered by your local Citizens Advice Bureau.

Accommodation/Letting Agencies

Please note that the letting agencies operate independently of the university and their accommodation has not been inspected or approved. The services provided by agencies are by no means uniform. While some provide a very limited service, merely introducing prospective tenants to landlords, others have a property management role which continues throughout the tenancy. This means that it is they who are responsible for repairs, inspections etc, rather than the landlord. Make sure you know who you will be dealing with before you sign a contract.

Car parking

Students are not eligible for car parking on Oxford Brookes campuses or at the halls of residence and there is very little parking in the city of Oxford. We therefore advise you not to bring a car. If you have a place in a university hall of residence it is a condition of your licence that you do not keep a car in Oxford.

If you live in off-campus accommodation, you will find that a car is really not necessary as Oxford has very good public transport within the city and excellent transport links to the rest of the country, especially London. We run a fleet of Brookes buses and an annual pass can be purchased upon arrival (this is included, at no extra cost, to students living in halls) allowing you unlimited travel between the campuses, halls of residence, local supermarkets and the city centre. We also run a weekly bicycle clinic offering you free bike repairs – you only pay for parts.



I'm mid-30's and don't really want to go out partying every night – I want to focus on my studying. For the last 2 years I have been with postgraduates and they are more focused on what they want, so parties are a lot less.

Jason James Bradford,
studying Osteopathy

STUDENTS' UNION ADVICE

The Students' Union Advice Centre offers free, independent confidential advice and information to all students and prospective students of Oxford Brookes University.

Contact details;

Oxford Brookes Students' Union Advice Centre
Helena Kennedy Student Centre
Headington Campus
Oxford OX3 0BP

Tel: 01865 484770

Fax: 01865 484773

email: suadvice@brookes.ac.uk

www.thesu.com/advice

Opening times

Monday – Friday, 10.00am – 4.30pm
semester-time (reduced opening times during vacations)





‘Living in halls is a great way to meet other students and make friends. When you move in you’ll have the support of our dedicated hall staff to help you settle in and make sure your new home is safe and secure.’

Emma Rosentall, Accommodation Officer (Halls)



To obtain a large-print copy of this publication or to enquire about other formats please contact 01865 484848 or email query@brookes.ac.uk

Oxford Brookes is committed to the principle of equality. Our policies and practices promote equality of opportunity for all who study, work and visit our community. We seek to make the university an inclusive place to work and study and welcome applications from all sections of the community and from people at all stages of their life. To find out more see www.brookes.ac.uk/services/hr/eod or contact the HR Team & Business Partnership Manager (Equal Opportunity and Diversity) +44 (0) 1865 485929.