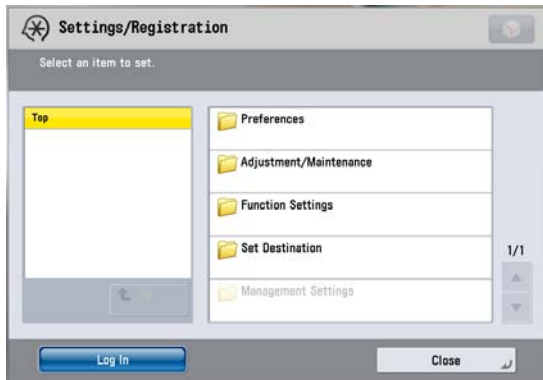


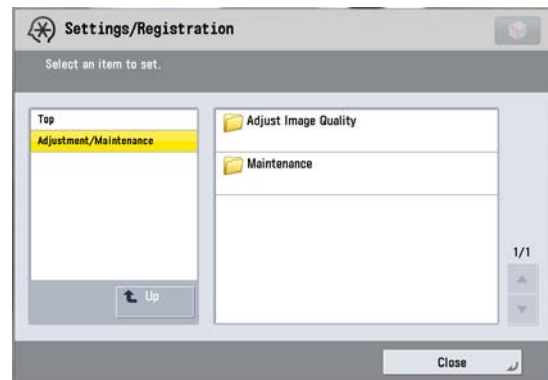
# TONER CARTRIDGE REPLACEMENT

NB. This feature is switched off by default so that toner cannot be replaced unless the cartridge is empty.

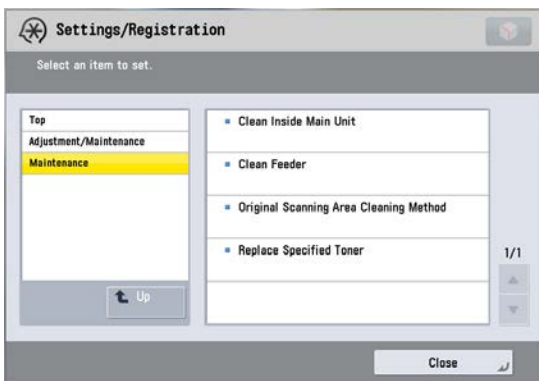
1. Press the Additional Functions button then select 'Adjustment/ Maintenance'.



2. Select 'Maintenance'.



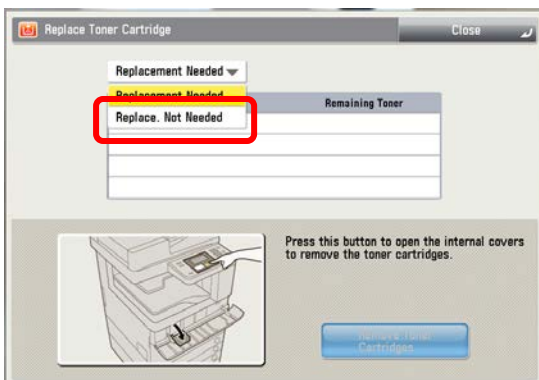
3. Select 'Replace Specified Toner'.



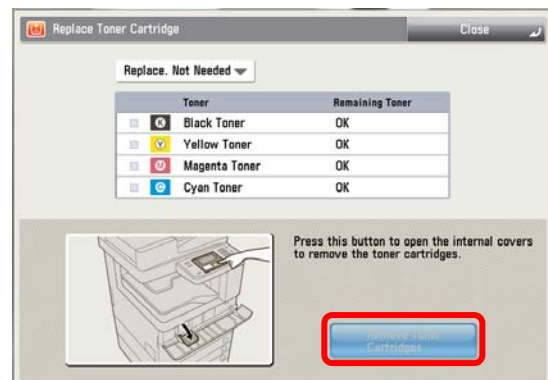
4. As instructed on the UI, open the toner cartridge cover.



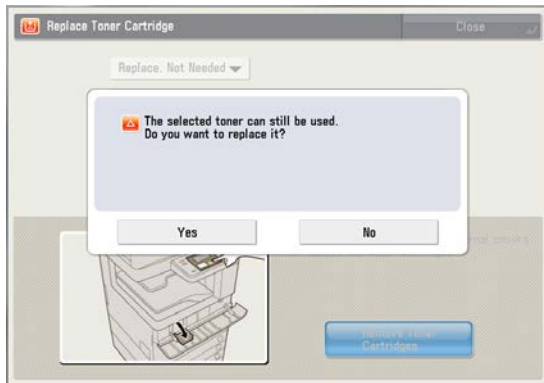
5. From the drop-down box select 'Replace. Not Needed'



6. Select the toner to be replaced & press 'Remove Toner Cartridges'.



7. When the message appears select 'Yes'.



8. The internal cover concealing the toner cartridge will open automatically.



9. Carefully remove the toner cartridge.



10. Follow all the steps on the touch screen to replace the toner cartridge.



11. Close the internal cover then close the toner replacement cover.

