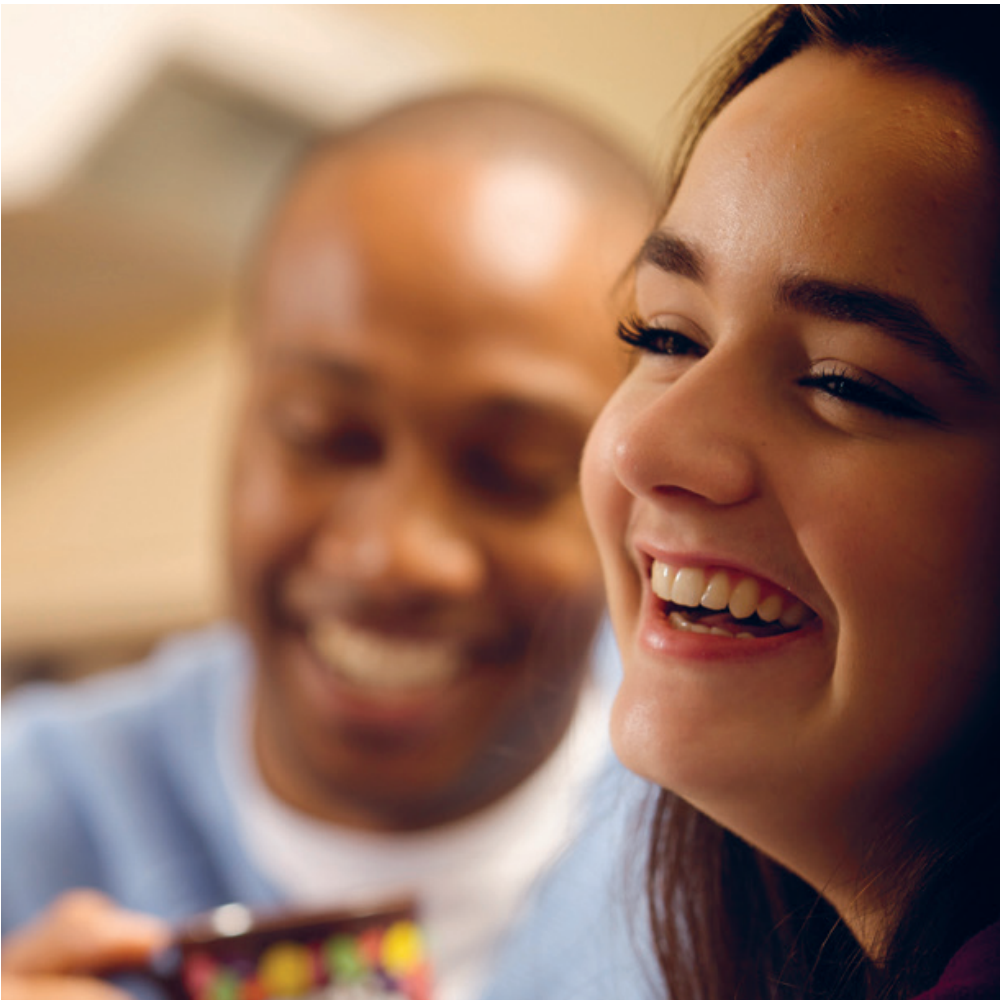


## **BECOMING A PLACEMENT PROVIDER**

Supporting adult, and/or mental health and/or children's student nurses



Developing the future nursing workforce in Oxfordshire

# The future NHS workforce needs you

Students on the University's pre-registration nursing courses need to understand the patient journey and continuum of care. They also need to experience some of the available services to inform their future career choices.

The Nursing and Midwifery Council requires student nurses to experience community care throughout each year of their course, and this is achieved by undertaking placements in external healthcare establishments.

Becoming a placement provider will give you the opportunity to work in partnership with Oxford Brookes University, to develop a skilled and effective workforce which will meet the needs of Oxfordshire now and in the future.

## The benefits of providing placements

**Placements are a vital part of the workforce of the future.**

By promoting excellent nursing practice to student nurses, you will greatly contribute to the development of their competence and professional practice. As a placement provider you will:

- encourage a culture of learning in nursing practice, making a significant difference to care provision and clinical effectiveness
- be able to support your team's development by enabling staff to engage in critical enquiry and evidence based practice

- be able to attract staff with the right values which will aid recruitment
- receive educational preparation for Practice Assessors and Practice Supervisors in your staff team
- receive a placement tariff payment for each student placement you provide. NB Tariff is paid by Health Education England and not the University. We will inform you of the process for this.
- be supported by Oxford Brookes University
- support your nurses to meet NMC revalidation requirements through evidence of CPD in relation to student supervision and assessment (NMC Standards 2018)
- free access to the annual Oxford Brookes University conference day for Private, Voluntary and Independent (PVI) nursing placement providers for CPD
- celebrate the success achieved through successful collaboration.

## How can you get involved?

1. Contact the Head of Practice Education to express an interest. An informal visit will be arranged.
2. You will be sent a Practice Placement Agreement (PPA) after the visit which is a standard legal document that identifies your responsibilities to the learner and the University's responsibilities to you. This is signed by your CEO/Senior Manager.
3. Once the PPA has been signed, a member of the Oxford Brookes University Placement Team will work with you to complete the audit (1-2 hours) and agrees to enable any staff members to attend Practice Assessor/Practice Supervisor courses or updates as needed.

4. An online Placement Profile will be created that will provide students with specific information relating to the placement area.
  5. Once all of the above happens you will be informed via email of a student being placed with you. This will include the length of placement and hours to be completed in practice. The student may contact you directly for details of their Practice Assessor/Practice Supervisor and shifts.
  6. Students are required to be in direct or indirect supervision at all times, although this can be long-arm support, to meet the NMC (2018) requirements.
  7. Students have supernumerary status throughout the duration of their course, but this does not mean that students are purely observers. Students must participate in activities as supervised by a practice assessor / practice supervisor and make an evolving contribution to care delivery.
  8. The University will contact you during and after the first student placement to ensure that there are no problems. Students and Practice Assessors/Supervisors are asked to evaluate the placement experience. This will provide the Practice Assessor/Supervisor with feedback and also the University to monitor the quality of placement learning.
- The Placement Team at Oxford Brookes University will manage all organisational aspects of the placement. The NMC approved Adult Nursing programme includes learning outcomes for theory and practice. The team have structured each of the three years to have periods of theory and practice.
  - Following the visit and the Placement Agreement being signed, the placement is provided with access to the online Practice Education Management System (PEMS) and the Oxford Brookes Practice Education Unit (PEU) learning resources on the PEU website.
  - Working together, we then undertake an educational audit, identifying your educational requirements for Practice Assessors and Practice Supervisors. Practice Assessor/Practice Supervisor training and updates are readily available face to face or online. Information is available on the Practice Education website.
  - Once the student is placed with you, support is available through a named Link Lecturer should any problems or concerns exist.
  - Students are expected to be professional at all times and will be issued with a Fitness to Practice identity badge before placement. This ensures that they have completed DBS and Occupational Health clearance and all mandatory training.
  - We will be happy to respond to any questions you may have.

## How will the University support you before, during and after a student is placed?

- The University develops and supports practice across a whole range of patient care settings.

## Frequently asked questions

### What is involved in becoming a placement provider and how long will this take?

- An initial visit or virtual meeting to discuss learning opportunities for students and the development needs of Practice Assessors and Practice Supervisors.
- The development of a practice placement profile for your placement area.
- Completion of a learning environment audit.
- The setting up can take from a few weeks to six months.

### How long are the placements and when will I be informed of when a student will be on placement?

- Placements are between six and twelve weeks. You will be notified well in advance that a student has been allocated to you (normally six weeks prior to the start of the placement).

### What is the role of the Practice Supervisor in supporting students?

- Practice Supervisors agree appropriate learning opportunities and facilitate learning experiences so that students may achieve the required proficiencies and programme outcomes.
- Practice Supervisors support and supervise students in line with their own scope of practice.
- Practice Supervisors provide verbal and written feedback on the students' progress and contribute to students' assessments to inform decisions about progression.
- Practice Supervisors will participate in educational updates as required.

### What is the role of the Practice Assessor in supporting students?

- Practice Assessors are responsible for assessing the students overall performance including making evidence based assessments on conduct, proficiency and achievement.
- Practice Assessors will gather and coordinate feedback about the student's progress from practice supervisors and other members of the team.
- Practice Assessors will have opportunities to observe the student to inform decision making for assessment and progression.
- Practice Assessors will participate in educational updates as required.

### How are students prepared?

- Occupational Health and Disclosure and Barring Service clearance; mandatory training; skills based training and professional behaviour training.

### What support will be available?

- Ongoing support will be provided by the University for both students and the placement provider.
- Online resources are available from the University's Practice Education web pages: [www.brookes.ac.uk/hls/support/practice-education](http://www.brookes.ac.uk/hls/support/practice-education)

## Contact us

If you are interested in becoming a placement provider, or would like more information, please contact:

Sarah Khan  
Head of Practice Education  
[skhan@brookes.ac.uk](mailto:skhan@brookes.ac.uk)

Practice Education Unit (PEU)  
[peu@brookes.ac.uk](mailto:peu@brookes.ac.uk)