

# Work with us

## Research, Innovation and Enterprise

We help organisations of all sizes tackle challenges, grow, and develop their people through:

- Expert consultancy
- Research and development
- Professional development
- Access to equipment, spaces and facilities
- UK Gov funding: Knowledge Transfer Partnerships

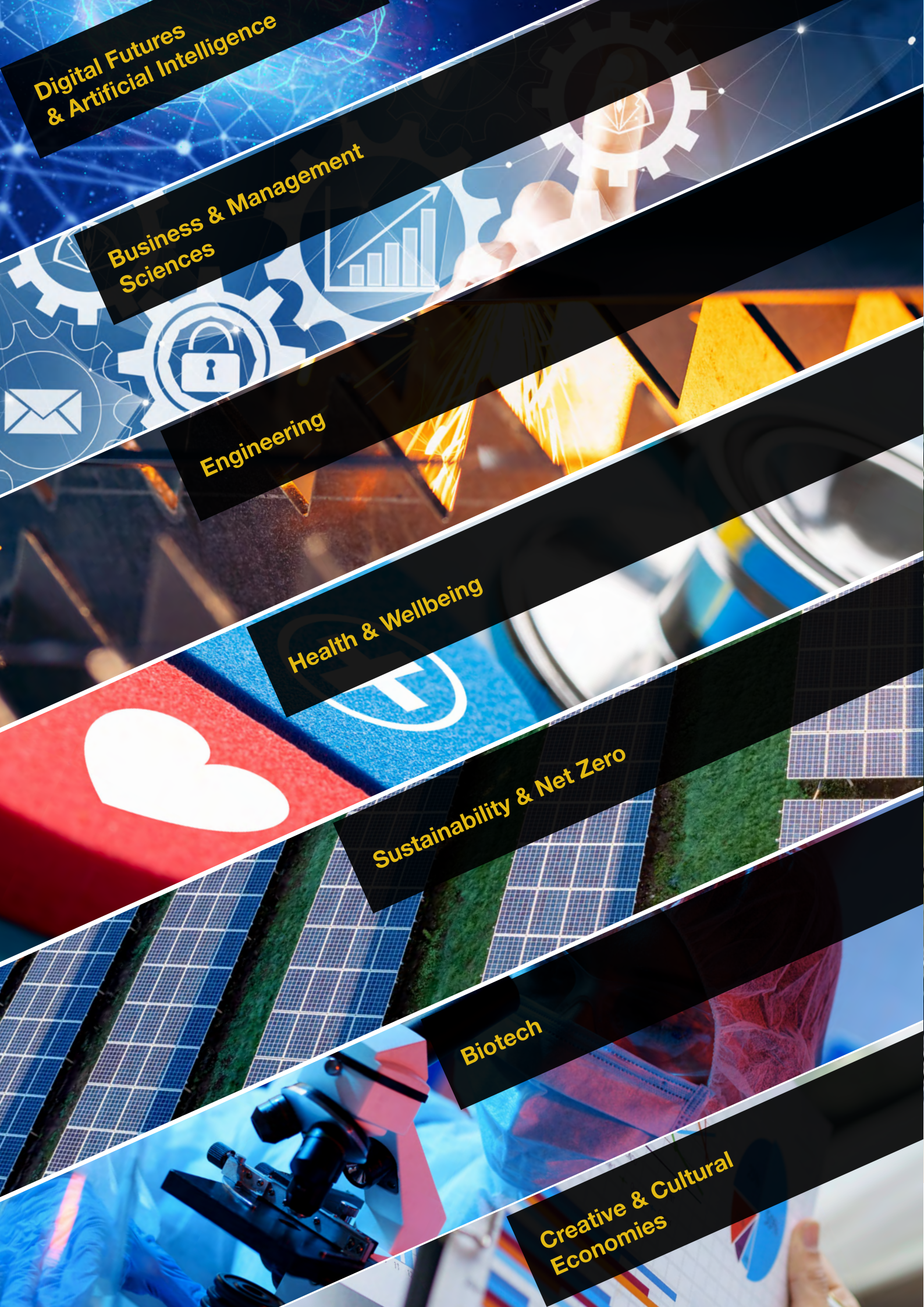
## Contact us:

✉ [rienquiries@brookes.ac.uk](mailto:rienquiries@brookes.ac.uk)

LinkedIn [www.linkedin.com/company/obu-rie](https://www.linkedin.com/company/obu-rie)

🖱 [www.brookes.ac.uk/rie](http://www.brookes.ac.uk/rie)





**Digital Futures  
& Artificial Intelligence**

**Business & Management  
Sciences**

**Engineering**

**Health & Wellbeing**

**Sustainability & Net Zero**

**Biotech**

**Creative & Cultural  
Economies**



**Research,  
Innovation and  
Enterprise**

#### **Expert Consultancy**

We facilitate a professional consultancy service to enable you to work with Oxford Brookes academics to access their knowledge and expertise.

#### **Professional Development**

Give your team a skills boost with our flexible short courses in health, business, education, law, and technology. We can also design custom training to meet your organisation's needs.

#### **Research and Development**

Work with our researchers to solve challenges and develop new ideas. You can also license our innovations to give your business a competitive edge.

#### **Access to Equipment, Spaces and Facilities**

Companies can use our top facilities and equipment in biotech, engineering, robotics, and simulation. We also rent out offices, labs and meeting spaces through the Enterprise Centre and Bioinnovation Hub.

#### **UK Gov Funding: Knowledge Transfer Partnerships**

A government funded KTP helps your business innovate and grow by linking you with university experts, employing a skilled graduate, and providing project support from start to finish.



# Expert Consultancy



## Need expert support to solve a business challenge?

Tap into the knowledge and expertise of Oxford Brookes University through our consultancy services.

### What your organisation gains:

- Direct access to academic experts with specialist insight
- Research-informed perspectives on your toughest challenges
- Flexibility – from one-off advice to in-depth projects

## Let's work together to move your business forward

Get in touch to explore how Oxford Brookes can support your next step.

### CASE STUDY

#### Environmental Energy Exchange

As part of our consultancy work at Oxford Brookes, my team at the Environmental Information Exchange provides tailored advice and training to help companies reduce waste, cut carbon, and move towards Net Zero through detailed energy assessments and practical low-carbon solutions.

Michael Esvelt, Director of Operations for the Environmental Energy Exchange





# Knowledge Transfer Partnerships



Innovate  
UK

Knowledge  
Transfer  
Partnerships



**Want to innovate but don't have the time or in-house expertise?**

Partner with Oxford Brookes University through a government-backed Knowledge Transfer Partnership (KTP). We'll help you turn your business challenges into opportunities for growth.

## What your organisation gains:

- A tailored, innovation project focused on your specific business goals
- Expert support from our academics
- A high-calibre graduate working full-time in your business,

**Ready to move your business forward?**

Talk to us about how a KTP could support your goals.

## CASE STUDY

### Smart Visitor Management

Blenheim Palace Development of a Smart Visitor Management System  
Through a Knowledge Transfer Partnership with Blenheim Palace, I helped develop an AI-driven system to predict visitor numbers and optimise operations—an example of how we use KTPs at Oxford Brookes to bring cutting-edge research into real-world business challenges.

Dr Paul Jackson, Principal Lecturer in Information Systems, Analytics and Operations





# Professional Development



**Ready to invest in your people and strengthen your business?**

Partner with Oxford Brookes University to develop and deliver Continuing Professional Development (CPD) that's tailored to your organisation's needs.

## What your organisation gains:

- Courses designed around your organisation, delivered by leading experts
- Practical, work-based learning that delivers immediate impact
- Flexible formats – from day workshops to part-time, professional qualifications.

**Ready to build a training solution that works for you.**

Talk to us about the current and future training needs of your workforce.

## CASE STUDY

### Help to Grow: Management

The programme is a unique opportunity for senior leaders to build expertise across the key areas and to boost business performance, resilience and long-term growth, and is delivered by small business and enterprise experts from Oxford Brookes Business School and supported by leading figures from industry and experienced entrepreneurs. The 12-week programme has been purposed to be taken alongside full-time work. The programme is built around a practical curriculum that also features 1:1 support from a business mentor, peer-learning sessions and an alumni network.





# Access to Equipment, Spaces & Facilities



## Require access to specialist equipment and facilities?

At Oxford Brookes University, we offer businesses access to our high-quality equipment, labs, and specialist spaces—so you can test, build, create or train, without needing to invest in your own infrastructure. From engineering labs to media suites, simulation equipment to studio spaces – we've got the facilities to support your innovation.

## What your organisation gains:

- Use of advanced equipment and facilities normally reserved for research and teaching
- Expert support from our technical staff to help you get the most out of what you hire
- Flexible access – whether you need space for a day, a week, or longer

## Need space or equipment to take your innovation further?

Talk to us about accessing our facilities at Oxford Brookes.

### CASE STUDY

#### Glycemic Index Testing

We are the only centre in Europe and one of eight in the World accredited by the Glycemic Index Foundation to test foods for Glycemic Index.



### CASE STUDY

#### Enterprise Centre and Bioinnovation Hub

The Oxford Brookes Bioinnovation Hub and Enterprise Centre provide companies access to office spaces, lab benches, experts and professional networks.





# Research and Development

Looking to develop new ideas, products and services through university partnerships and collaboration?



## CASE STUDY

### Unlocking the Power of Nutrition with Oxford Brookes Centre for Nutrition and Health

Dr Shelly Coe, Senior Lecturer in Nutrition, Oxford Brookes University

At the Oxford Brookes Centre for Nutrition and Health (OxBCNH), we're dedicated to improving global health outcomes through cutting-edge research on functional foods. As the first research centre in the UK focused on functional food, we lead the way in tackling critical health issues like obesity, glycaemic control, and inflammation reduction.

Our work is not only academic; we actively collaborate with businesses in the food and health industries to apply our research to real-world challenges. Through partnerships, we help businesses develop new products and improve existing ones with scientifically backed evidence. Whether you're looking to innovate in the areas of metabolism, clinical nutrition,

sports nutrition, or genetics, our team of experts provides invaluable insights and practical solutions that drive success in the marketplace.

For example, we've supported food companies in reformulating products to reduce sugar content while maintaining taste and nutritional value, contributing to healthier products that align with global health recommendations. Our unique combination of academic expertise, state-of-the-art research, and industry collaboration offers businesses a chance to stay ahead in a rapidly evolving market.

If you're a business seeking to innovate in nutrition and health, collaborating with OxBCNH provides access to world-class expertise and research that can transform your products and services.







## CASE STUDY

### Driving Innovation with Advanced AI and Data Systems at AIDAS

Professor Fabio Cuzzolin, Director of the Artificial Intelligence, Data Analysis and Systems Institute and Professor of Artificial Intelligence

At the Artificial Intelligence, Data Analysis and Systems (AIDAS) Institute, we leverage world-class expertise in AI to translate our research advancements into impact in both industry and society. From neuromorphic chips and uncertainty-aware predictions to software security designs and multi-objective reinforcement learning, we aim to push the boundaries of what is considered to be possible in artificial intelligence.

Our institute acts as a hub for interdisciplinary projects across the University. The Visual Artificial Intelligence Laboratory is pioneering deep learning applications in action detection and uncertainty theory, and the Advanced Reliable Computer Systems Group is

delivering cutting edge innovation in chemical sensor architectures and data encryption technologies, which are crucial for applications in security and authentication. We conduct extensive work in cloud, cybersecurity and software engineering, and our Machine Learning and Robotics Group conducts transformative work using the Criticality Analysis method in prevention healthcare for diabetes. The Institutes also addresses how AI impacts on culture and society conducting research on moral agents and social norms.

By partnering with AIDAS, businesses gain access to groundbreaking AI technologies and expertise, helping them stay ahead in a competitive market, enhance their security infrastructure, and transform their operations.



## CASE STUDY

### Leading the Way in Sustainable Development with the Oxford Institute for Sustainable Development

Professor Rajat Gupta, Director of the Oxford Institute for Sustainable Development and Professor of Sustainable Architecture and Climate Change

At the Oxford Institute for Sustainable Development (OISD), we are committed to driving forward sustainable practices in both the built and natural environments. As one of the UK's largest research institutes dedicated to sustainable development, our work spans across six distinct research groups, addressing the social, economic, environmental, and governance dimensions of sustainability. Since our founding in 2004, we have worked on a variety of innovative projects, collaborating with businesses, policymakers, and communities to create solutions that balance sustainability with practical implementation.

Our research is multi- and interdisciplinary, aiming to bridge gaps between concepts, designs, technical approaches, and policy. For example, we have worked with construction firms to develop sustainable building techniques that reduce environmental impact without compromising on performance, safety, or cost. We also help businesses navigate policy debates, providing the evidence base and practical insights needed to stay ahead of regulatory requirements and contribute to a more sustainable future.

If your business is looking to integrate sustainability into its operations or product offerings, the expertise and insights of OISD can provide you with cutting-edge solutions that not only improve environmental performance but also drive innovation in your sector.





# OXFORD BROOKES UNIVERSITY

For more information about research, innovation and enterprise opportunities at  
Oxford Brookes University please email

**[rieenquiries@brookes.ac.uk](mailto:rieenquiries@brookes.ac.uk)**

Linked  **[www.linkedin.com/company/obu-rie](https://www.linkedin.com/company/obu-rie)**

 **[www.brookes.ac.uk/rie](http://www.brookes.ac.uk/rie)**