

Your future: remastered

Postgraduate study at
Oxford Brookes 2021/22

Welcome

Embarking on postgraduate study is a rewarding journey that can open many doors. At Oxford Brookes there are plenty of opportunities to broaden your horizons – whatever your reasons for pursuing further study.

We offer different modes of study, including full-time, part-time and distance learning, so that your learning can be completed around existing work, family or voluntary commitments. Whether you're looking to get ahead in your career, are a natural-born learner or want to pursue a passion – we have courses to suit many interests.

Our guide has everything you need to research your postgraduate course, from course length to facts about your area of study.

We also support a range of research degrees, and have a strong international reputation for research excellence.



Contents

| | |
|-------|---|
| 04-05 | Why Oxford Brookes? |
| 06-07 | Student life |
| 08-09 | Your career: remastered |
| 10-11 | Accommodation |
| 12 | Finance |
| 13 | Support and wellbeing |
| 14 | Accounting and Finance |
| 15-17 | Architecture |
| 18-19 | Art, Digital Media, Film and Music |
| 20-23 | Biological and Medical Sciences, Ecology and Conservation |
| 24-29 | Business and Management |
| 30-33 | Computing and Mathematics |
| 34-39 | Education, Early Years and Teacher Training |
| 40-41 | Engineering |
| 42-43 | English Literature and Creative Writing |
| 44-46 | Health Sciences and Social Work |
| 47 | History |
| 48-49 | Journalism and Publishing |
| 50-51 | Law |
| 52-55 | Marketing, Events and Hospitality Management |
| 56-59 | Nursing and Midwifery |
| 60-63 | Planning and Urban Design |
| 64-65 | Real Estate and Construction |
| 66-67 | Social Sciences and Psychology |
| 68-69 | Sport, Exercise and Nutrition |
| 70-71 | Pathway courses |
| 72 | Research degrees |
| 73 | Learning resources |
| 74-76 | Course index |
| 77 | Course accreditations |
| 78-79 | Visit us |

At a glance



Our **Top 20 worldwide Global MBA** is dual accredited by the Association of MBAs (AMBA) and EFMD/EPAS

QS Distance Online MBA Ranking 2020



Our **MA Humanitarian Action and Peacebuilding** course is designed by UNITAR and CENDEP



We are **ranked 2nd in the UK** for teaching in the Times Higher Education Young University Rankings 2020



The **Centre for Movement, Occupational and Rehabilitation Sciences (MORES)** has supported vital healthcare research for global pandemics



Our **Bioinnovation Hub** brings early stage biotech companies on campus to foster collaboration between industry and academia



We offer a **10% discount** on postgraduate tuition fees for alumni, friends and family

Why Oxford Brookes?

To ensure our teaching is kept relevant, lecturers are active in research, with many world leaders in their fields. We also nurture our ties with local businesses and science and research communities. This gives you first-hand expertise that you can put into practice and apply to real-life situations.

Oxford Brookes University has a modern campus with green open spaces and a community feel, yet is found in the bustling city of Oxford.



The John Henry Brookes Building, Headington Campus.

Award-winning spaces

Our innovative courses, outstanding teaching and strong industry-employer links are just some of the reasons Oxford Brookes is a great place to study. Another is our award-winning John Henry Brookes Building, which sits at the heart of our Headington Campus. It brings together stunning student spaces, inspiring teaching areas and a hi-tech library. This building has transformed the way students learn, live and socialise on campus.



Ranked in the **top 10 in 3 subject areas**, Oxford Brookes enjoys a reputation for high-quality teaching, great employer links and a first-class careers service.

The Complete University Guide 2020



“Oxford Brookes’ location is unparalleled – having access to the Bodleian Library, and being located in a city with fantastic case studies in conservation ultimately made it clear that Brookes was where I wanted to be.”

**LAUREN AYERS, MSc
HISTORIC BUILDING
CONSERVATION GRADUATE**

Oxford

Steeped in history with an exciting mix of cultures, Oxford is an inspirational student city. It is also one of Europe’s major educational, scientific and technological centres.

The city’s libraries, museums and creative venues will stimulate your ideas and challenge your thinking. In addition to our own state-of-the-art library resources, postgraduate students have access to the world-renowned Bodleian libraries.

Student life

As a postgraduate student, your experience will go beyond just lectures. Whether you want to get active, join a society or explore Oxford, there is something for everyone to enjoy at Oxford Brookes.

Brookes Union

Run by students for students, Brookes Union acts as your voice and representative during your time at university. Our union offers:

- a network of student reps who ensure that all students can provide feedback on their learning experience
- over 100 societies – a great way to meet new people and learn new skills
- confidential and impartial advice from trained advisers who can help with issues, such as student finance and academic matters.



Brookes Sport

Sport is a central part of life at Oxford Brookes. We are proud of our inclusive range of activities and initiatives. With excellent facilities and equipment we offer something for everyone, including:

- Oxfordshire's premier climbing wall
- group exercise and wellness classes
- recreational sport and activities
- a swimming pool, boathouse, courts, pitches, sports bar and more.

Brookes Sport offers a range of discounted membership packages to students, as well as pay as you go options for gym, classes, swimming, climbing and courts.

Explore the city

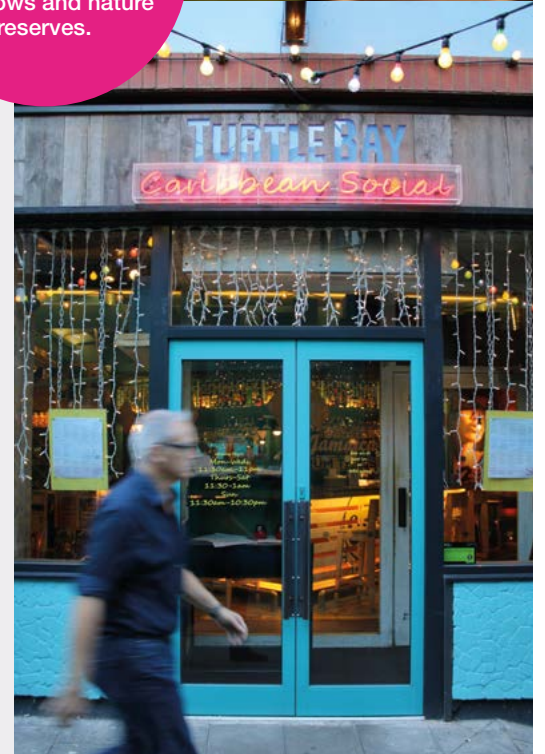
Oxford is a city of contrasts. The city's dreaming spires nestle within a bustling city, pocketed with tranquil green open spaces. Beyond its history there is the Westgate shopping centre, with its mix of high end and high street shopping to suit all budgets.

There are also plenty of eclectic pubs, clubs, bars and restaurants around the city with a mix of cuisines to suit all tastes. Immerse yourself in the city's culture by exploring its museums and galleries. There are also city events and traditions throughout the year for you to enjoy.

MODERN ART
OXFORD
FREE ADMISSION



Oxford's green spaces allow you to easily escape the city. Explore over 50 parks, meadows and nature reserves.



Your career: remastered

Postgraduate study is more than just an opportunity to deepen subject knowledge. It's an investment in your future that can inspire confidence, sharpen skills, open doors and enrich your prospects.

At Oxford Brookes, we have a proven record of equipping our students with the expertise they need to follow their chosen career path. We have extensive links with leading employers and industry figures. This means you get connected with professional networks – giving you the contacts to flourish in your chosen career.



“The teaching staff and industry connections exceeded my expectations. The Vehicle Dynamics lectures were full of interesting anecdotes and real world examples, which made a challenging subject fun.”

CALUM PATERSON, MSc MOTORSPORT ENGINEERING GRADUATE



Our dedicated careers service

We offer a range of career support tailored to meet your needs, as well as essential skills to help you find your ideal job, including:

- practical advice on CV writing, compiling job applications and interview skills
- one-to-one drop-in sessions with careers coaches
- an online vacancy service
- career fairs and employer events
- a programme of workshops for future leaders
- tailored workshops for research students
- a specialist careers coach for international and EU students
- continuing professional development advice once you have graduated.

International students

Pre-arrival we're on hand to help with immigration, visas and finance issues. Once you're here we run socials, buddy schemes and offer free English language support to help you settle in as quickly as possible.

www.brookes.ac.uk/students/isat



DEVELOP YOUR CAREER PROSPECTS:

“With my course almost finished, I was determined to look for my next opportunity to develop my career in human resources.”

SHARNA PICKEN, HR ADVISER SWANSEA UNIVERSITY, POSTGRADUATE DIPLOMA IN HUMAN RESOURCE MANAGEMENT GRADUATE



In 2019, full-time employed postgraduates of working age earned on average **£3,500 more** than other graduates.

UK government graduate labour market statistics 2020

Our extensive industry links include:

- | | |
|------------|---------------|
| • Apple | • KPMG |
| • Bayer | • Microsoft |
| • BMW | • Savills |
| • Cisco | • Sony |
| • Deloitte | • Warner Bros |
| • F1 | |
| • IBM | |

Accommodation

Become part of a great student community. We have residences exclusively for postgraduate students, located close to campus and the city centre.

“The accommodation was ideal, had everything I needed and it was a great place to make friends and meet people.”

NEIL WILSON, MSc DIGITAL MEDIA PRODUCTION GRADUATE

Commuting to Oxford is also an option, thanks to quick and affordable transport links with London and many other cities across the UK.



If you are moving to Oxford for your studies there are also plenty of options to live in private rented accommodation throughout the city.

The Clive Booth Postgraduate Centre

The Clive Booth Postgraduate Centre is a purpose-built development which allows you to live exclusively with other postgraduates and mature students. Located just half a mile from our Headington Campus, it is a modern development that provides postgraduates with a sense of community.

The Postgraduate Centre forms part of Clive Booth Student Village complex, which is a larger student residential complex surrounded by landscaped grounds and trees.

- **Clive Booth Postgraduate Centre:** 38 or 50 week contracts from £171.01 per week.

We also offer mixed accommodation at Sinnet Court, Crescent Hall, Lady Spencer Churchill Hall, Westminster Hall, Westminster Studios and Clive Booth Hall family flats.

- **Clive Booth Hall family flats:** £269.01 per week – en-suite
- **Crescent Hall:** £116.27 per week for 38 week contract – non en-suite
- **Lady Spencer Churchill Hall:** £159.74 per week for 38 week contract – non en-suite and catered
- **Sinnet Court:** £147.48 per week for 50 week contract – en-suite
- **Westminster Hall:** £168 per week for 38 week contract – en-suite
- **Westminster Studios:** £207.06 per week for couples for 38 or 50 week contract – en-suite

At a glance:

- utility bills included
- a subsidised BROOKESbus pass included, providing transport between campuses, halls and into town
- high speed internet connection
- basic contents insurance included
- on-site security with on-call wardens
- limited one bedroom flats for couples
- guaranteed accommodation for international students*
- accommodation available for families*
- accommodation suitable for wheelchair users.*

* if application is submitted by deadline

+ Available at Clive Booth Hall family flats



Take a look at our website for the latest information and to view virtual tours of our accommodation – www.brookes.ac.uk/accommodation



Finance

Finance shouldn't be an obstacle to studying. There are several options available to you as a postgraduate student. The UK government offers a Postgraduate Master's Loan of up to £11,222 (2020/21), and a Postgraduate Doctoral Loan of up to £26,445 to help with course fees and living costs.

Scholarships and bursaries are also available for some courses.

Please see our finance pages for more information:

www.brookes.ac.uk/finance

SAVE MONEY:
10% discount on postgraduate courses at Oxford Brookes for alumni, friends and family.

Other help

You might be able to get funding from:

- an individual – sometimes donations are made directly to the university for specific subject areas
- your employer – they might sponsor you if the course is relevant to your job
- a Disabled Students' Allowance
- a Professional and Career Development Loan.

Find out more information at www.gov.uk/postgraduate-loan

Support and wellbeing

At Oxford Brookes we are committed to giving you the help and advice you need to fulfil your potential and enjoy your time as a postgraduate student. As well as offering support for our students around careers, accommodation and finance, we also have a dedicated Wellbeing Service.

Wellbeing Service

Delivered by a team of friendly, professional support staff, our Wellbeing Service offers a range of confidential services, with specialists on hand to provide advice and guidance on:

- learning support
- specialist mentoring
- medical issues
- disability support
- equality, diversity and inclusion
- spiritual issues
- childcare
- mental and emotional wellbeing.

91% of students using our counselling service said it had improved their experience of being at Oxford Brookes.

“There's lots of support available for students at Oxford Brookes. Whether you have an ongoing need or you want to talk to someone about managing a particular issue, we'll be able to put you in touch with the appropriate person.”

CHRIS TUCK, DEPUTY DIRECTOR OF ACADEMIC & STUDENT ADMINISTRATION (STUDENT SERVICES)

Accounting and Finance

Accounting and Finance MSc

Accredited by the Association of Chartered Certified Accountants (ACCA)

Duration

Full time: 1 year
Part time: 2 years

Summary

This holistic course balances technical accounting and finance knowledge with practical skills. You are taught in small interactive groups by experts from the profession as well as leading researchers in the field. On completion, you will be able to apply for exemptions from the ACCA to launch your career.

Entry requirements

- A minimum of a second class honours degree (2.2), or equivalent, in any academic discipline.
- IELTS minimum 6.0.
- Two satisfactory references.

Further information

- For course fees and additional information see: www.brookes.ac.uk/postgraduate/courses/acc-fin

Finance MSc

Duration

Full time: 1 year
Part time: 2 years

Summary

This holistic course balances technical knowledge with practical skills. You are taught in small interactive groups by experts from the finance industry as well as leading researchers. You will understand the key areas of finance and develop the soft skills needed to perform well in this competitive industry.

Entry requirements

- A minimum of a second class honours degree (2.2), or equivalent, in any academic discipline.
- IELTS minimum 6.0.
- Two satisfactory references.

Further information

- For course fees and additional information see: www.brookes.ac.uk/postgraduate/courses/fin



“Oxford Brookes University is the ideal university for me to cultivate global business expertise. The MSc Accounting and Finance degree covers a wide range of practical modules, which offer not only financial reporting but also performance management, auditing and corporate governance, whilst simultaneously offering an accreditation with the ACCA. I am convinced Oxford Brookes is the best university for me to achieve success in my future career.”

**ERIKA HAYASHI,
MSc ACCOUNTING AND
FINANCE GRADUATE**

Architecture

Applied Design in Architecture (ARB and RIBA Part 2) MArchD

Accredited by RIBA, ARB and LAM

Duration

Full time: 2 years

Summary

Develop your skills as an architectural designer with the MArchD Applied Design in Architecture. Join our innovative School of Architecture in Oxford and choose a unique design specialisation to enhance your portfolio. Expand your knowledge on how to utilise technology and space for a more sustainable future. Provides ARB/RIBA/LAM Part 2.

Entry requirements

- Hold a 2.2+ undergraduate honours degree (or international equivalent), in architecture or a discipline highly relevant to architecture.
- Possess an appropriate professional background and experience of designing architecture, or designing in a discipline that has a strong relationship or similarities to architecture.

Further information

- For course fees and additional information see: www.brookes.ac.uk/postgraduate/courses/appdesignarch



We also offer alternative routes to ARB/RIBA qualifications through the RIBA Studio (Certificate and Diploma) and Architect higher degree apprenticeships (Parts 2 and 3). For more information visit www.brookes.ac.uk/architecture

Architecture MArch, PGDip

Duration

Full time: 1 year

Summary

Develop your creative and critical thinking and advance your design skills with our one year Master's in Architecture programme. Explore new ways in which architectural design can be applied to practice and research by re-imagining the design process. Incorporating learnings from wider disciplines, this course is ideal for those who are looking to enhance their design skills.

Entry requirements

- A minimum of a second class honours degree (2.2) in architecture or a discipline relevant to architecture.
- An appropriate professional background and experience of designing architecture, or an alternative design discipline with strong similarities.
- The course also welcomes applicants from other design fields: For example, product design, fine art, graphic design and interior design. Such applicants should possess a strong undergraduate degree achievement.

Further information

- For course fees and additional information see: www.brookes.ac.uk/postgraduate/courses/march



**Ranked 8th in the
Guardian League Table
2020 in Architecture**



*Work by Johannah Fening
MArchD Applied Design in
Architecture student.*

Development and Emergency Practice MA, PGDip, PGCert

Duration
Full time: 1 year
Part time: 2 years

Summary
Develop your knowledge, skills and attitudes in the rapidly changing field of development and emergencies with this course. With a core emphasis on practice, you can specialise in areas such as: human rights, emergencies and development, disasters, risks, shelter and development and conflict and humanitarian action. This course is ideal for those with, or seeking, careers in: NGOs, humanitarian work or international development.

- Entry requirements**
- Hold a good honours degree in a related discipline such as anthropology, sociology, economics, geography, psychology and other social sciences, architecture, law, public health, public administration.
 - A relevant recognised diploma or professional qualification (eg in architecture, planning, environmental psychology, public health, public administration).
 - Final year of studying for a degree in any relevant discipline.
 - Have substantial and proven field experience.

Further information

- For course fees and additional information see: www.brookes.ac.uk/postgraduate/courses/dep

Humanitarian Action and Peacebuilding MA, PGCert

This course is co-delivered with UNITAR

Duration
Part time distance learning: 30 months

Summary
This online distance-learning course is aimed at investigating the interactions between humanitarian action and peacebuilding, and is designed for practitioners working in those fields. It merges knowledge and techniques developed in both fields to promote better targeted initiatives and responses. It has been designed using the knowledge and expertise of both UNITAR and the Centre for Development and Emergency Practice.

- Entry requirements**
- An approved honours degree (or equivalent) at 2.1 or above in a relevant discipline.
 - Have substantial and proven field experience (minimum 10 years) in humanitarian action, peacebuilding and related fields.

Further information

- For course fees and additional information see: www.brookes.ac.uk/postgraduate/courses/hap

International Architectural Regeneration and Development MA, PGDip, PGCert

Duration
Full time: 1 year
Part time: 2 years

Summary
This course focuses on sustainable development and regeneration of the built environment. You will explore how to reuse, adapt and evolve existing buildings within an urban or rural context. You will examine the impacts these decisions and interventions have on the regeneration of a place. This course prepares you for a practical and leading role in organisations involved in architectural regeneration and development.

- Entry requirements**
- Hold a good honours degree (minimum 2.2), or international equivalent, in a related discipline.
 - A recognised postgraduate diploma or professional qualification in a relevant subject.
 - Can provide a portfolio or equivalent samples of work (for non-design applicants).
 - A mature candidate, who can demonstrate considerable practical experience in a related field.

Further information

- For course fees and additional information see: www.brookes.ac.uk/postgraduate/courses/iard

Shelter after Disaster PGCert

Duration
Full time: 4 months (1 semester)

Summary
The quantity and severity of natural disasters are increasing as our planet struggles with climate change, population growth and conflict. The need for effective 'shelter after disaster' – the provision of houses and homes for those affected – has never been greater. This programme is designed to develop reflective practitioners who will have an understanding of the practical and strategic issues of development and emergency practice, as well as an appreciation of the social and political context.

- Entry requirements**
- Hold an approved undergraduate degree in a relevant discipline.
 - A relevant recognised diploma or professional qualification in a relevant discipline (eg human rights, development practice, humanitarianism, architecture, planning, environmental psychology, public health, geography, public administration).
 - Have substantial and proven field experience (as a potential replacement of a degree qualification) within a relevant area, for example, with a non-profit organisation.

Further information

- For course fees and additional information see: www.brookes.ac.uk/postgraduate/courses/sad

Sustainable Architecture: Evaluation and Design MSc, PGDip, PGCert

Duration
Full time: 1 year
Part time: 2 years

Summary
This course provides you with the knowledge to be able to design, construct and evaluate on the creation of low carbon and sustainable buildings. You will learn how to evaluate the environmental impacts of your decisions. This course is taught by architects, engineers and physicists involved in practice and research.

- Entry requirements**
- Hold an approved undergraduate honours degree minimum 2.2, or equivalent overseas qualification, in a relevant discipline such as architecture, engineering or physics and other subjects related to the built and natural environments.
 - Possess an appropriate professional background and experience in architecture, building or building servicing design.

Further information

- For course fees and additional information see: www.brookes.ac.uk/postgraduate/courses/saed



"I was really blown away by the number of things the university has to offer. I remember when I was applying for my master's in Architecture, Oxford Brookes was the only university that gave me the chance to choose from a number of very interesting options and specialise in a specific field of architecture which is almost unheard of. From that moment I knew Oxford Brookes was the only university I wanted to be in."

LARY EHIMUAN, MArchD
ARCHITECTURE GRADUATE



Our staff are leading world-class research both in the UK and across the globe in a variety of areas including sustainability, low carbon buildings, humanitarian action, and development and emergency practice.

ART

Fine Art MFA, PGDip, PGCert

Duration

Full time: 1 year

Part time: 2 years

Summary

The MFA Fine Art provides you with postgraduate studio-based arts practice, critical theory and access to professional skills and knowledge needed to succeed in careers in the arts. This course will appeal to independent artists wanting to extend their practice within a critical research framework with support from tutors who are practising artists, writers and curators.

Entry requirements

- 2.1 or first-class honours degree in any subject.
- An internationally recognised qualification equivalent to a good British honours degree.

Further information

- For course fees and additional information see:
www.brookes.ac.uk/postgraduate/courses/fineart



Student work exhibited as part of the MFA End of Year show 2019.
Work featured by Alice Brookes.



Oxford Brookes is ranked
5th for Art in the Guardian
League Table 2020

DIGITAL MEDIA, FILM AND MUSIC

Digital Media Production MSc

Duration

Full time: 1 year

Part time: 2 years

Summary

This course will provide you with the skills and professional expertise needed to excel in the creative industries. The course covers video and audio production, motion capture, computer graphics and animation. You'll learn how to create innovative contemporary media products. You'll also have the opportunity to work on dynamic projects such as game engines and mobile applications.

Entry requirements

- Hold a first degree equivalent to at least a 2.2 in any discipline.
- If you have relevant professional qualifications or work experience you can also be considered.

Further information

- For course fees and additional information see:
www.brookes.ac.uk/postgraduate/courses/dmp

Film Studies: Popular Cinema MA, PGDip, PGCert

Duration

Full time: 1 year

Part time: 2 years

Summary

On this MA in Film Studies: Popular Cinema, you will develop a historically-informed and critically aware understanding of film as an industry, art form and cultural product. Through professional and academic writing projects, you'll graduate with a broad portfolio of writing and research skills. You'll be taught by experts from across a broad range of specialisms and benefit from regular screenings, guest lectures and engaging research networks.

Entry requirements

- Hold a good honours degree (2.1 or above), or its equivalent, in an arts and humanities subject or similar discipline.

Further information

- For course fees and additional information see:
www.brookes.ac.uk/postgraduate/courses/film

Music MA, PGDip, PGCert

Duration

Full time: 1 year

Part time: 2 years

Summary

The MA in Music offers advanced training in either musicology or composition, or a combination of both. The modular structure allows you to pursue a broad generalist course or to specialise in a particular area of your choice. The course offers rich opportunities for career development and can pave the way for further study at PhD level if so desired. The Professional Experience module gives you the opportunity to strengthen professional skills for either academia or industry through a professional placement.

Entry requirements

- A good honours degree, minimum 2.1 (not necessarily in Music) or equivalent.
- An internationally recognised qualification equivalent to a good British honours degree.

Further information

- For course fees and additional information see:
www.brookes.ac.uk/postgraduate/courses/music

“I chose the course as it covered a wide area of digital media subjects, but above all there was a focus on it being practical. I wanted the opportunity to develop skills which I could use straight away in industry and improve my employability.”

NEIL WILSON, MSc DIGITAL MEDIA PRODUCTION GRADUATE

Biological and Medical Sciences, Ecology and Conservation

Conservation Ecology

MSc, PGDip, PGCert

Accredited by CIEEM

Duration

Full time: 1 year

Part time: 2 years

Summary

This course is designed to develop your professional and field skills, including identification and survey techniques, required for effective conservation and employment. Key ecological concepts, practices and controversies underlying conservation are introduced. There are two pathways: one focuses on conservation within the UK/EU and the other on conservation at the international level.

Entry requirements

- 2.1 or 2.2 honours degree in a related scientific subject from a recognised institution of higher education or evidence of the potential to succeed based on professional and/or related experiences.
- Two satisfactory references (one of these must be an academic reference).

Further information

- For course fees and additional information see: www.brookes.ac.uk/postgraduate/courses/ce

Medical Genetics and Genomics MSc

Duration

Full time: 1 year

Part time: up to 3 years

Summary

This course is aimed at graduates wishing to develop skills and knowledge in human genetics and genome analysis for employment in the medical biotechnology/pharma and genomics sector, and those wishing to go on to do research degrees. Embedded throughout the course are opportunities for you to develop essential skills to achieve quality outcomes for genomic medicine in practice.

Entry requirements

- 2.2 honours degree or above or equivalent degree in life sciences from a recognised institution.
- Other qualifications may be considered under exceptional circumstances when accompanied by highly relevant professional experience.
- A reliable and stable access to the Internet.

Further information

- For course fees and additional information see: www.brookes.ac.uk/postgraduate/courses/mgg



“I have been passionate about wildlife and ecology since I was a child, and wanted a course that could actually give me the practical standing that employers value, not just the academic stamp. In the end, Oxford Brookes ticked all the right boxes – fees, accreditation, practical and theoretical balance, location, facilities and course content.”

**JACKIE JOBES,
MSc CONSERVATION
ECOLOGY GRADUATE**

Our labs and teaching spaces have recently undergone an £8 million refurbishment so you'll be working in top-quality labs including a new bioimaging unit which houses advanced light and electron microscopes.

PRIMATE CONSERVATION

Primate Conservation

MSc, PGDip, PGCert

Duration

Full time: 1 year

Part time: 2 years

Summary

Gain the knowledge and skills to help conserve the world's primates and their habitats by joining this award-winning course. You will learn from leading experts actively engaged in conservation projects, with connections to more than 50 fieldwork sites worldwide – leading to disseminating your work to benefit primate conservation and welfare.

Entry requirements

- You will normally be required to have a good honours degree in a related discipline.
- Applications that demonstrate the ability to work at the required level may be considered for non-graduates or graduates from unrelated disciplines.

Further information

- For course fees and additional information see: www.brookes.ac.uk/postgraduate/courses/pc

Primate Conservation – Apes in the Anthropocene

MSc, PGDip, PGCert

Duration

Full time: 1 year

Part time: 2 years

Summary

This course is for those with an interest in great apes and gibbons. This pathway of the MSc Primate Conservation allows you to focus on developing strategies for their conservation and welfare, or to engage in cognition and behavioural studies. Innovative coursework provides training to work as a practitioner, advocate or academic.

Entry requirements

- You will normally be required to have a good honours degree in a related discipline.
- Applications that demonstrate the ability to work at the required level may be considered for non-graduates or graduates from unrelated disciplines.

Further information

- For course fees and additional information see: www.brookes.ac.uk/postgraduate/courses/apes



The Primate Conservation course is led by world-renowned Professor Anna Nekaris in Primate Conservation and Anthropology, whose research focuses on lorises, nocturnal mammals, and Asian primates. Professor Anna Nekaris is also co-editor of *Folia Primatologica*.

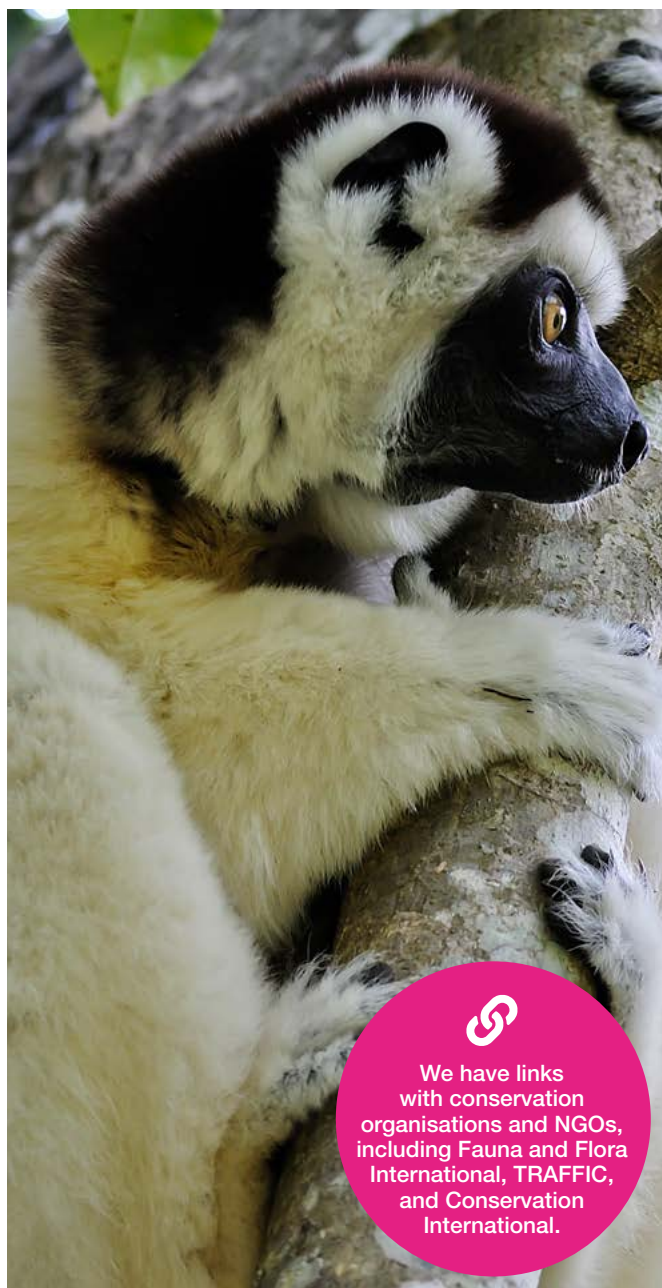
Biological and Medical Sciences, Ecology and Conservation

PRIMATE CONSERVATION



“The MSc is about developing each student’s skills according to their interests and ambitions and directly applying the theory to their future careers. Throughout the year, we met with inspiring wildlife conservationists, biologists and other researchers via weekly seminars, conferences and other events.”

CAMILLA N Z COUDRAT,
MSc PRIMATE
CONSERVATION GRADUATE



We have links with conservation organisations and NGOs, including Fauna and Flora International, TRAFFIC, and Conservation International.

PRIMATE CONSERVATION

Primate Conservation – Human-Primate Interface

MSc, PGDip, PGCert

📅 Duration

Full time: 1 year
Part time: 2 years

✍ Summary

This pathway of the MSc Primate Conservation programme is for those interested in challenges that occur when primates and humans come face-to-face. You’ll explore topics including wildlife and bushmeat trade, human-wildlife conflict, conservation governance and ecotourism. You’ll receive training to work in conservation, resource management and policy as a practitioner, advocate, or academic.

✔ Entry requirements

- You will normally be required to have a good honours degree in a related discipline.
- Applications that demonstrate the ability to work at the required level may be considered for non-graduates or graduates from unrelated disciplines.

ℹ Further information

- For course fees and additional information see:
www.brookes.ac.uk/postgraduate/courses/human

Primate Conservation – Lemurs and Nocturnal Primates

MSc, PGDip, PGCert

📅 Duration

Full time: 1 year
Part time: 2 years

✍ Summary

This pathway is for those with an interest in lemurs, lorises, galagos, tarsiers and night monkeys. This pathway of the MSc in Primate Conservation allows you to focus on developing strategies for their conservation and welfare or engage in behavioural studies. Innovative coursework provides training to work as a practitioner, advocate or academic.

✔ Entry requirements

- You will normally be required to have a good honours degree in a related discipline.
- Applications that demonstrate the ability to work at the required level may be considered for non-graduates or graduates from unrelated disciplines.

ℹ Further information

- For course fees and additional information see:
www.brookes.ac.uk/postgraduate/courses/lemurs

Primate Conservation – Primates

MRes, PGCert

📅 Duration

Full time: 1-3 years

✍ Summary

This research-intensive programme allows in-depth exploration into research topics including international conservation, ecology, taxonomy, morphology and evolution and the emerging technologies required to study these topics. Learn from leading researchers, with connections to more than 50 research sites worldwide – leading to disseminating your work in international journals and at conferences.

✔ Entry requirements

- You will normally be required to have a good honours degree in a related discipline.
- Applications that demonstrate the ability to work at the required level may be considered for non-graduates or graduates from unrelated disciplines.

ℹ Further information

- For course fees and additional information see:
www.brookes.ac.uk/postgraduate/courses/primconservation

Entrepreneurship and Innovation MSc

Duration

Full time: 1 year
Part time: 2 years

Summary

This exciting and innovative programme is for students interested in the areas of entrepreneurship and innovation. It is equally valuable if you are wanting to set up your own business (entrepreneurs), or wanting to pursue a career in an established organisation (intrapreneurs).

Entry requirements

- A minimum of a 2.2 honours degree, or equivalent, in any academic discipline.
- IELTS minimum 6.0.
- Two satisfactory references.

Further information

- For course fees and additional information see:
www.brookes.ac.uk/postgraduate/courses/innovation

International Business Management MSc

AMBA and CMI accredited

Duration

Full time: 1 year or 2 years with optional 12-month work placement for September start
Part time: 2 years

Summary

This master's course is focused on your career. You will learn to identify, analyse and evaluate a range of business related issues and develop suitable responses to these problems. This will make you ready for a successful international career with a commercial or not-for-profit organisation.

Entry requirements

- A minimum of a 2.2 honours degree or equivalent, in any academic discipline.
- IELTS minimum 6.0.
- Two satisfactory references.

Further information

- For course fees and additional information see:
www.brookes.ac.uk/postgraduate/courses/bm

International Business Management and Corporate Social Responsibility MSc

AMBA and CMI accredited

Duration

Full time: 1 year
Part time: 2 years

Summary

This specialism enables you to focus your studies within the area of corporate social responsibility (CSR). Focusing on the CSR discipline will prepare you for a range of careers around the themes of sustainability and corporate governance.

Entry requirements

- A minimum of a 2.2 honours degree or equivalent, in any academic discipline.
- IELTS minimum 6.0.
- Two satisfactory references.

Further information

- For course fees and additional information see:
www.brookes.ac.uk/postgraduate/courses/bmcsr

“The opportunity to share your opinion with other people and look at a subject from different angles is beautiful. The fact that we are international also makes this very special. The knowledge, the experience, the international environment – it gives a good advantage and will definitely help me with my career in the future.”

ANNA BEZUGLAYA, MSc INTERNATIONAL BUSINESS MANAGEMENT GRADUATE

The International Business Management courses are accredited by AMBA and CMI which are dedicated to promoting the highest standards in management and leadership excellence.

International Business Management and Digital Strategy MSc

AMBA and CMI accredited

Duration

Full time: 1 year or 2 years with optional 12-month work placement for September start
Part time: 2 years

Summary

You will examine how businesses manage their digital operations in line with their strategy and understand how business decisions are made from a digital perspective. You will explore how different organisations manage digital transformations and innovations, and the importance of this in a globalised world.

Entry requirements

- A minimum of a 2.2 honours degree, or equivalent, in any academic discipline.
- IELTS minimum 6.0.
- Two satisfactory references.

Further information

- For course fees and additional information see:
www.brookes.ac.uk/postgraduate/courses/bmdigitalstrat

International Business Management and Entrepreneurship MSc

AMBA and CMI accredited

Duration

Full time: 1 year or 2 years with optional 12-month work placement for September start
Part time: 2 years

Summary

Enterprise and entrepreneurship are recognised as being vital to the development of the modern economy – both in terms of new business start-ups and as part of managing and growing existing organisations. This programme is valuable both if you are intending to start your own business, or looking to join an established organisation.

Entry requirements

- A minimum of a 2.2 honours degree, or equivalent, in any academic discipline.
- IELTS minimum 6.0.
- Two satisfactory references.

Further information

- For course fees and additional information see:
www.brookes.ac.uk/postgraduate/courses/busimentr

International Business Management and Finance MSc

AMBA and CMI accredited

Duration

Full time: 1 year or 2 years with optional 12-month work placement for September start
Part time: 2 years

Summary

You will examine how businesses manage their finances in line with their corporate strategy and understand how business decisions are made from a financial perspective, managing working capital and evaluating risk. You will explore how different financial markets operate and how the financial sector has transformed as a result of globalisation.

Entry requirements

- A minimum of a 2.2 honours degree, or equivalent, in any academic discipline.
- IELTS minimum 6.0.
- Two satisfactory references.

Further information

- For course fees and additional information see:
www.brookes.ac.uk/postgraduate/courses/bmf

Over the last few semesters we have welcomed speakers from Harley-Davidson, the RAF, the UN, Barclays Bank, and Taylor Wimpey.

Business and Management

BUSINESS

International Business and Intercultural Communication MA, PGDip, PGCert

Duration

Full time: MA: 1 year, PGDip: 9 months

Part time: MA: 2 Years, PGDip: 15 months

Summary

This course is for graduates who want to pursue a career in a multinational company or international organisation and do not necessarily have a background in business studies. You will gain both the academic and professional skills you need to succeed in the business world through a combination of campus-based study, and a work placement/internship or permanent job in the UK or abroad.

Entry requirements

- A good first degree.
- A final decision about a candidate's suitability is normally based on interview.

Further information

- For course fees and additional information see: www.brookes.ac.uk/postgraduate/courses/ibic

International Business and Marketing Management MSc

AMBA and CMI accredited

Duration

Full time: 1 year or 2 years with optional 12-month work placement for September start

Part time: 2 years

Summary

Focusing on the marketing discipline will prepare you for a range of careers. These include product and brand management, market analysis and research, customer relationship and services management, direct marketing, digital marketing, public relations, media and advertising.

Entry requirements

- A minimum of a 2.2 honours degree or equivalent, in any academic discipline.
- IELTS minimum 6.0.
- Two satisfactory references.

Further information

- For course fees and additional information see: www.brookes.ac.uk/postgraduate/courses/bmgmtm

International Business and Supply Chain Management MSc

AMBA and CMI accredited

Duration

Full time: 1 year or 2 years with optional 12-month work placement for September start

Part time: 2 years

Summary

You will examine how businesses manage their supply chains, how these are aligned with their corporate strategy and understand how business decisions are made from a supply chain perspective. This includes elements such as the procurement materials for products and services and managing logistical operations.

Entry requirements

- A minimum of a 2.2 honours degree, or equivalent, in any academic discipline.
- IELTS minimum 6.0.
- Two satisfactory references.

Further information

- For course fees and additional information see: www.brookes.ac.uk/postgraduate/courses/bscm



Many of our graduates find managerial positions at companies like Deutsche Telekom, Deloitte, Oxfam, Revolution Insurance, American Business Conferences and Consilio Global.

COACHING

Coaching and Mentoring Practice MA, PGDip PGCert

Duration

Part time: MA: 2-5 years, PGDip: 16 months, PGCert: 8 months

Summary

On this course you will integrate your prior work and life experiences with the theoretical concepts underpinning coaching and mentoring. You will expand your knowledge of theories and develop the skills and approaches necessary to grow professionally as a coach or mentor.

Entry requirements

- A first degree or equivalent professional experience.
- Students without a degree but significant experience will be considered.
- IELTS minimum 6.5.
- Two satisfactory references.

Further information

- For course fees and additional information see: www.brookes.ac.uk/postgraduate/courses/coachmentor

Doctor of Coaching and Mentoring DCM

Duration

Part time: 3-5 years

Summary

This doctorate fosters excellence in professional practice by developing the capabilities needed to become a leader in the field. You will be challenged to augment your existing expertise and push the boundaries of your knowledge in order to operate at the highest level, and be confident in providing facilitation and consultancy.

Entry requirements

- Appropriate master's level qualifications and experience.
- IELTS minimum 7.0 overall.

Further information

- For course fees and additional information see: www.brookes.ac.uk/postgraduate/courses/dcam

"I chose to study the MA Coaching and Mentoring Practice because of its outstanding reputation, flexibility and the quality of teaching and learning. This experience has enhanced my understanding and passion for coaching and I have recently enrolled on the Doctorate in Coaching and Mentoring."

BENITA MAYHEAD, MA COACHING AND MENTORING GRADUATE



HUMAN RESOURCES

Human Resource Management MA, PGDip

CIPD accredited

Duration

Part time: MA: 2 years, PGDip: 20 months

Summary

This course will help you progress your career and enhance your Human Resource (HR) professional practice. You will develop core HR skills and knowledge, as well as the ability to understand and evaluate issues of strategic importance in human resource management

Entry requirements

- Graduates with at least one year's experience in a full-time HR role.
- Non-graduates require at least three years' experience in a HR role or equivalent.
- IELTS minimum 6.0.

Further information

- For course fees and additional information see: www.brookes.ac.uk/postgraduate/courses/mahm

Human Resource Management – Fast Track MA

CIPD accredited

Duration

Part time: 1 year

Summary

A fast-track MA for Human Resource (HR) professionals who already have a Postgraduate Diploma in Human Resource Management. You can study online or on campus to top up your diploma qualification to a full MA.

Entry requirements

- A Postgraduate Diploma in Human Resource Management from a recognised institution.
- IELTS minimum 6.0.

Further information

- For course fees and additional information see: www.brookes.ac.uk/postgraduate/courses/hrmdirect

Human Resource Management MSc

CIPD accredited

Duration

Full time: 1 year
Part time: 2 years

Summary

Develop your career as a Human Resource (HR) practitioner or consultant. You will build your professional HR knowledge whilst developing your core HR skills. This master's course has many popular features including skills development workshops and visits to organisations to examine their HR practice.

Entry requirements

- A minimum of a second class honours degree (2.2), or equivalent, in any academic discipline.
- IELTS minimum 6.0.
- Two satisfactory references.

Further information

- For course fees and additional information see: www.brookes.ac.uk/postgraduate/courses/hrm

“Oxford Brookes is known for really innovative and practical teaching.”

KEITH WISCHERMANN, MSc MANAGEMENT GRADUATE

MANAGEMENT AND MBA

International Management and International Relations MSc

CMI accredited

Duration

Full time: 1 year
Part time: 2 years

Summary

On this unique master's degree you will develop your international management skills. You will do this alongside the study of international relations and the current economic, political and social situation. This will increase your understanding of the global environment in which the business, government and non-governmental organisation (NGO) sectors function

Entry requirements

- A minimum of a 2.2 honours degree, or equivalent, in any academic discipline.
- IELTS minimum 6.0.
- Two satisfactory references.

Further information

- For course fees and additional information see: www.brookes.ac.uk/postgraduate/courses/imir



The Oxford Brookes Global MBA is a Top 20 worldwide MBA and top 5 in the UK QS Distance Online MBA Rankings 2020.

Management MSc

CMI accredited

Duration

Full time: 1 year or 2 years with optional 12-month work placement
Part time: 2 years

Summary

This programme aims to prepare you with the knowledge and skills required for a management career in a range of contexts across the globe. The programme has a focus on 'soft skills' in recognition of the increasing importance of these skills in today's workplace, particularly in management roles.

Entry requirements

- A minimum of a 2.2 honours degree, or equivalent, in any academic discipline.
- IELTS minimum 6.0.
- Two satisfactory references.

Further information

- For course fees and additional information see: www.brookes.ac.uk/postgraduate/courses/interman

The Oxford Brookes Global MBA

AMBA and EPAS accredited

Duration

Part time: 30 months (depending on learning style)

Summary

The Oxford Brookes Global MBA is an executive, part-time quality MBA. It is highly flexible, offering both online and on-campus study options. The Global MBA achieves this through a market-leading, innovative 'blended' learning design, that integrates our long experience of running both accredited high-quality online, and on-campus MBA programmes. It is for experienced, globally-connected professionals, giving you the confidence to make a lasting impact in business.

You will network and share experiences with a diverse group of international managers, and be guided by our highly experienced tutor team to develop your leadership potential and entrepreneurial flair.

Entry requirements

- Minimum three years' relevant managerial or professional experience.
- A good degree or relevant postgraduate qualification.
- Or without a degree, a student would need seven years' relevant managerial or professional experience.
- IELTS minimum 6.0.
- Two written references.

Further information

- For course fees and additional information see: www.brookes.ac.uk/postgraduate/courses/global-mba

COMPUTING

Artificial Intelligence

MSc, PGDip, PGCert
Initial BCS accredited MSc

Duration

Full time: 1 year, 2 years with placement

Part time: 2 years, 3 years with placement

Summary

Our Artificial Intelligence (AI) course allows you to develop the skills, knowledge and understanding to pursue careers at the cutting edge of AI and implement novel technological solutions to real-world problems. The course is informed by the state-of-the-art research being undertaken in the school and you will study topics such as machine learning, deep learning and intelligent autonomous systems.

Entry requirements

- Hold a first degree equivalent to at least a 2.2 in a computer-related subject, mathematics, engineering or a science-related subject, in which good programming skills have been developed.

Further information

- For course fees and additional information see:
www.brookes.ac.uk/courses/postgraduate/artificial-intelligence

Advanced Computer Science

MSc, PGDip, PGCert
BCS accredited MSc (CITPFL, partial CEng)

Duration

Full time: 1 year, 2 years with placement

Part time: 2 years, 3 years with placement

Summary

This British Computer Society accredited course will help you develop the diverse range of skills required to produce solutions to complex projects found widely in global industries. Such projects include web technology combining networking, human-computer interface and intelligent systems, and high-speed networks using concepts from artificial intelligence and requiring intelligent front ends.

Entry requirements

- Hold a first degree equivalent to at least a 2.2 in a computer-related subject.
- If your first degree is not in computing but you have worked in the computing industry you can also be considered.

Further information

- For course fees and additional information see:
www.brookes.ac.uk/postgraduate/courses/cs

Computer Science for Cyber Security

MSc, PGDip, PGCert
This course has full certification by NCSC, part of GCHQ, and is a BCS accredited MSc (CITPFL, partial CEng)

Duration

Full time: 1 year, 2 years with placement

Part time: 2 years, 3 years with placement

Summary

This programme equips you with advanced computer science and cyber security skills necessary to produce modern and secure systems. You will have the opportunity to use industry standard tools and techniques in our dedicated security, server and networking laboratories which provide a safe space for you to practise both offensive and defensive security techniques.

Entry requirements

- Hold a first degree equivalent to at least a 2.2 in computer science or a related engineering or computing degree.

Further information

- For course fees and additional information see:
www.brookes.ac.uk/postgraduate/courses/compscics

The University is heavily involved in artificial intelligence research and recently launched The Institute for Ethical AI, comprised of consulting consortiums on the ethical implementation of using technology to solve business problems.

COMPUTING

Computing Science

MSc, PGDip, PGCert
BCS accredited MSc (partial CITP)

Duration

Full time: 1 year, 2 years with placement

Part time: 2 years, 3 years with placement

Summary

If your first degree is not in computing but you want to move into computing or IT then our British Computer Society accredited MSc in Computing Science is designed for you. Our course provides the basis for starting a career in computing and IT; teaching you the fundamentals of programming, hardware, networks and software engineering.

Entry requirements

- Hold a first degree equivalent to at least a 2.2 in a non-computing subject.

Further information

- For course fees and additional information see:
www.brookes.ac.uk/postgraduate/courses/computing

Software Engineering

MSc, PGDip, PGCert
BCS accredited MSc

Duration

Full time: 1 year, 2 years with placement

Part time: 2 years, 3 years with placement

Summary

This British Computer Society accredited course is designed to produce successful software engineers who will have an understanding of software engineering principles (and their application), design skills, knowledge of good management practice, computing science and mathematical formalism. This course will equip you to begin a career, or to undertake further study in this important and exciting area.

Entry requirements

- Hold a first degree equivalent to at least a 2.2 in a computer-related subject.

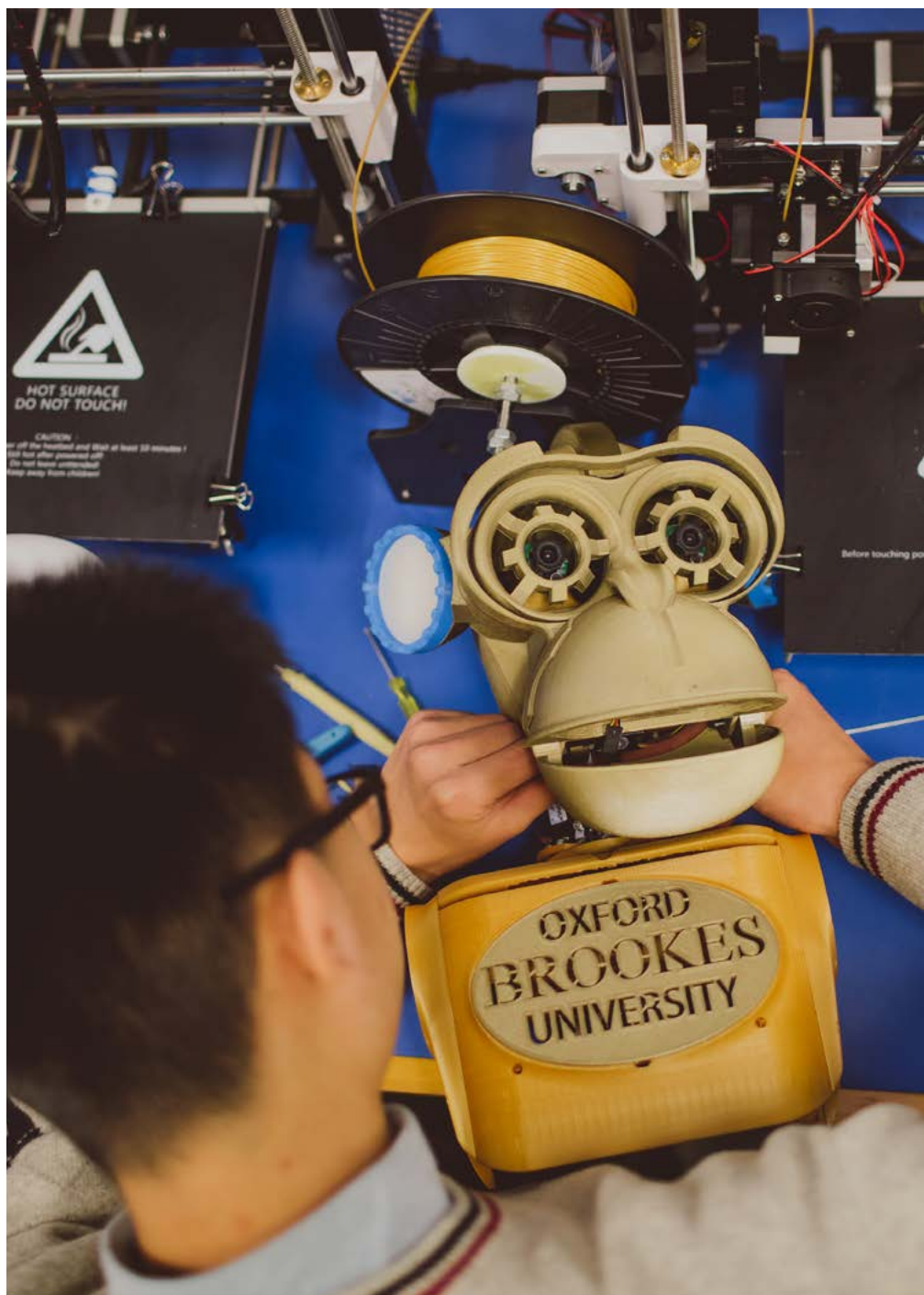
Further information

- For course fees and additional information see:
www.brookes.ac.uk/postgraduate/courses/se



“Working in a research environment with leading academics in the field is great. You get to learn something new every day.”

KURT DEGIORGIO,
MSC ADVANCED COMPUTER
SCIENCE GRADUATE



COMPUTING AND MATHEMATICS

Data Analytics MSc

Duration

Full time: 1 year

Part time: 2-5 years

Summary

With developments in digital technology, society has entered the era of 'Big Data'. In the UK, Big Data has been announced as one of the government's eight great technologies with priorities for funding and research. This programme is developed with the guidance of the Office for National Statistics. You will learn the fundamental theory and practice of computing, as well as mathematical and statistical modelling practices. The course also includes emphasis on data analysis and visualisation.

Entry requirements

- Hold a first degree equivalent to at least a 2.2 in the physical or social sciences.

Further information

- For course fees and additional information see: www.brookes.ac.uk/postgraduate/courses/data-analytics

Data Analytics for Government MSc

Duration

Part time: 2-5 years

Summary

The MSc in Data Analytics for Government enables talented public sector employees to combine their computing, statistical and mathematical skills to meet the challenges of our modern data-driven society. The course is structured in conjunction with the Office for National Statistics, in order to meet the specific needs of public sector bodies in the UK. The course covers recent developments in data analytics and provides you with the skills and techniques needed to utilise them in your workplace.

Entry requirements

- This programme is restricted to employees of all public sector bodies in the UK
- Hold a first degree equivalent to at least a 2.2 in the physical or social sciences.

Further information

- For course fees and additional information see: www.brookes.ac.uk/courses/postgraduate/data-analytics-for-government



You will have access to fantastic teaching facilities, including state-of-the-art labs, computer rooms and social learning spaces.

Education, Early Years and Teacher Training

CONTINUING PROFESSIONAL DEVELOPMENT

| Course title | 📅 Duration | ✅ Entry Requirements | ℹ Further information |
|---|---|--|--|
| Education – Leadership and Management PGCert | Part time: 1 year (on campus or via distance learning) | You should normally hold a good honours degree. | www.brookes.ac.uk/postgraduate/courses/leadership |
| Education – Artist Teacher Practice PGCert | Part time: 1 year (on campus or via distance learning) | You should normally hold a good honours degree. | www.brookes.ac.uk/postgraduate/courses/artist |
| Education – Early Childhood PGCert | Part time: 1 year (on campus or via distance learning) | You should normally hold a good honours degree. | www.brookes.ac.uk/postgraduate/courses/earlychildhood |
| Education – Children's Literature PGCert | Part time: 1 year (on campus or via distance learning) | You should normally hold a good honours degree. | www.brookes.ac.uk/postgraduate/courses/cl |
| Education – ELT Writing Materials PGCert | Part time: 1 year (on campus or via distance learning) | You should normally hold a good honours degree. | www.brookes.ac.uk/postgraduate/courses/eltwriting |
| Education – National Award for SEN Co-ordination PGCert <i>National Award for SEN Co-ordinator Provider Partnership</i> | Part time: 12-18 months | All applicants must have Qualified Teacher Status (QTS). | www.brookes.ac.uk/postgraduate/courses/senco |

The School of Education is a focal point for lively, informed debate on education through its seminar and lecture programmes.

CONTINUING PROFESSIONAL DEVELOPMENT

| Course title | 📅 Duration | ✅ Entry Requirements | ℹ Further information |
|--|---|--|--|
| Education – Teaching Multilingual Learners PGCert | Part time: 1 year (on campus or via distance learning) | You should normally hold a good honours degree. | www.brookes.ac.uk/postgraduate/courses/teal |
| Education – Working with Children with Literacy Difficulties PGCert <i>In association with AMBDA</i> | Part time: 1 year | A degree in a relevant subject area and experience of working with children with literacy difficulties. For the associated AMBDA award Qualified Teacher Status is also needed. | www.brookes.ac.uk/postgraduate/courses/ldiff |
| Education – Understanding and Managing SEMH Difficulties PGCert <i>In association with SEBDA</i> | Part time: 1 year (distance learning only) | 2.2 honours degree and above or equivalent. Working in a relevant setting with children and/or young people with social, emotional and mental health (SEMH) difficulties as part of their practice. | www.brookes.ac.uk/postgraduate/courses/semh |
| Education – Advanced Study in SEMH Difficulties PGCert <i>In association with SEBDA</i> | Part time: 1 year (distance learning only) | 2.2 honours degree and above or equivalent. Working in a relevant setting with children and/or young people with SEMH difficulties as part of their practice. | www.brookes.ac.uk/postgraduate/courses/semh-advanced |



Outdoor learning student group at Harcourt woods.

Education, Early Years and Teacher Training

EDUCATION

PGCE without QTS PGCE

Duration
Part time: 1 year

Summary

This course will support and enhance the Qualified Teacher Status (QTS) training delivered at school training partnerships. Each module focuses on particular aspects of your professional practice. NB: The PGCE without QTS does not in itself confer QTS.

Entry requirements

- Applicants should normally have a first degree or equivalent.
- All applicants will be screened for fitness for practice and a Disclosure and Barring Service (DBS) check will be made.

Further information

- For course fees and additional information see: www.brookes.ac.uk/postgraduate/courses/edpgce

Education MA

Duration
Full time: 1 year
Part time: 2-3 years (on campus or via distance learning)

Summary

The MA Education is aimed at those working in education across a range of contexts, or wishing to study and research in education. You can take the 'open route' where you can design the course according to your particular areas of interest and develop your critical enquiry and reflection in the field of education.

Entry requirements

- You should normally hold a good honours degree.

Further information

- For course fees and additional information see: www.brookes.ac.uk/postgraduate/courses/education

Education (Artist Teacher Practice) MA

Duration
Part time: 3 years (on campus or via distance learning)

Summary

This course is for you if you are working within art education in any sector to review and develop your creative practice in relation to the highest levels of contemporary practice. It is also for those working in community arts, as artists in residence, gallery/museum educators, or with community/youth arts groups.

Entry requirements

- Only open to UK residents.
- You should normally hold a good honours degree.

Further information

- For course fees and additional information see: www.brookes.ac.uk/courses/postgraduate/artist-teacher-practice



EDUCATION

Education (Childhood and Youth Studies) MA

Duration
Full time: 1 year
Part time: 2 years (on campus or via distance learning)

Summary

Pursue, or develop further, your skills and career as a practitioner or researcher working with children and young people. You will explore alternative conceptions of childhood and youth and consider children and young people's lives and experiences through the social, economic, technological and global contexts in which they are situated.

Entry requirements

- GCSE or equivalent qualification in English Language (A-C.)
- You should normally hold a good honours degree.
- Relevant professional experience.
- Some experience of working with children and/or young people.

Further information

- For course fees and additional information see: www.brookes.ac.uk/postgraduate/courses/childhood

Education (Leadership and Management) MA

Duration
Full time: 1 year
Part time: 2-3 years (on campus or via distance learning)

Summary

This course is for experienced teachers, lecturers and educational managers and other professionals in all phases of education (primary, secondary, further and higher education). You will develop critical enquiry and reflection in the field of educational leadership and management, and gain an award focused on leadership and management.

Entry requirements

- GCSE or equivalent qualification in English Language (A-C).
- You should normally hold a good honours degree.
- Relevant professional experience.

Further information

- For course fees and additional information see: www.brookes.ac.uk/postgraduate/courses/edulm

MA Education (SEND) MA

Duration
Full time: 1 year
Part time: 2-3 years (on campus or via distance learning)

Summary

You'll develop critical enquiry and reflection in the field of Special Educational Needs and Disabilities (SEND), and study in a learning environment where you will be supported in improving and developing your practice. You will gain depth and insight into your professional thinking and meet students who are at various levels in their careers.

Entry requirements

- You should normally hold a good honours degree.

Further information

- For course fees and additional information see: www.brookes.ac.uk/postgraduate/courses/edsend



You'll have the flexibility and support to study while you are working full or part time on the MA Education courses.

Education, Early Years and Teacher Training

EDUCATION

Education (TESOL) MA

Duration

Full time: 1 year

Part time: 2-3 years (on campus or via distance learning)

Summary

The MA Education: Teaching English to Speakers of Other Languages (TESOL) is for early career teachers seeking a grounding in the core disciplines of TESOL, and those with considerable experience looking to consolidate or progress into areas of expertise. The content is tailored to your own professional context, with practical as well as scholarly tasks and assignments.

Entry requirements

- You should normally hold a good honours degree.
- TESOL pathway students are required to show evidence of at least two years' experience of teaching in any context. Teaching practice acquired through CELTA or DELTA qualifications can count towards this. In some cases, a shorter period of teaching experience can be negotiated where there has been significant TESOL content study.

Further information

- For course fees and additional information see: www.brookes.ac.uk/postgraduate/courses/tesol

Education (Higher Education) MA

Duration

Full time: 1 year

Part time: 2 years (on campus or via distance learning)

Summary

The programme is a top-up MA (120 credits) allowing those with the PG certificate in Teaching in Higher Education (or equivalent) to progress to an MA in Education with a focus on policy, purposes and practices in HE. The course can also be delivered via distance learning.

Entry requirements

- You hold a PG certificate in Teaching in Higher Education (or equivalent).
- You should normally hold a good honours degree.

Further information

- For course fees and additional information see: www.brookes.ac.uk/postgraduate/courses/educationhigher

Doctor of Education EdD

Duration

Part time: 4-7 years

Summary

This course is a professionally-focused, cohort-based doctorate, aimed at experienced professionals working in education, health and related fields. You'll pursue doctoral study in the context of your professional role, combining taught modules with independent research. You'll develop advanced research skills and become an independent, reflective and competent researcher.

Entry requirements

- At least four years' experience in a relevant professional area, and a postgraduate master's degree from a recognised university.
- Merit or distinction in your master's, and you will need to provide an extract from your dissertation or from an equally substantial piece of academic writing.

We also ask you to provide a statement in support of your application, not exceeding 1,000 words, which should indicate:

- possible areas of research for your thesis (we recognise this may change during the course of your doctoral studies)
- why you want to join the EdD programme
- how you feel that it will enhance your professional development.

Further information

- For course fees and additional information see: www.brookes.ac.uk/postgraduate/courses/ed

TEACHER TRAINING

PGCE Post-compulsory PGCE

Duration

Full time: 1 year

Part time: 2 years

Summary

This course is the professional qualification for those who wish to teach in the education and training sector, including further education colleges and adult education. Successful completion of the course allows you to apply for QTLS (Qualified Teacher Learning and Skills).

Entry requirements

- Applicants are welcome from any academic discipline that is taught in FE or post-compulsory education and training.
- We also accept those with relevant vocational qualifications and experience who do not necessarily possess a degree.
- All applicants will be screened for fitness for practice and a Disclosure and Barring Service (DBS) check will be made.

Further information

- For course fees and additional information see: www.brookes.ac.uk/postgraduate/courses/pgce

PGCE Primary 3-7 (with QTS) PGCE (QTS)

Duration

Full time: 1 year

Summary

Become an effective teacher in any primary or nursery setting. You'll be training within a supportive community of educators, with mentors who can help you master skills and explore specialisms. You'll build confidence teaching in any classroom and you'll be able to support children from all different backgrounds.

Entry requirements

- 2.2 honours degree and above or equivalent.
- Passes at GCSE Level 4 (grade C) or above in English Language, Mathematics and Science (or equivalent).
- It's recommended that you have gained school experience.
- Satisfactory health and criminal record audits.
- All candidates whose application forms indicate appropriate qualification and experience will be invited to interview.

Further information

- For course fees and additional information see: www.brookes.ac.uk/postgraduate/courses/pgce3-7

PGCE Primary 5-11 (with QTS) PGCE (QTS)

Duration

Full time: 1 year

Summary

Do you want to be a teacher who makes a real difference? When you train to teach at Oxford Brookes you'll discover how you can become an outstanding teacher. You'll build confidence teaching in any classroom, and you'll have the freedom to experiment with approaches and techniques as you go.

Entry requirements

- 2.2 honours degree and above or equivalent.
- Passes at GCSE Level 4 (grade C) or above in English Language, Mathematics and Science (or equivalent).
- It's recommended that you have gained school experience.
- Satisfactory health and criminal record audits.
- All candidates whose application forms indicate appropriate qualification and experience will be invited to interview.

Further information

- For course fees and additional information see: www.brookes.ac.uk/postgraduate/courses/pgce5-11

"I was attracted to the PGCE Primary at Oxford Brookes because it offered a good balance between placements and campus time. I enjoyed meeting new people and sharing knowledge and experience with them, especially as many of those on the course are from different backgrounds."

IAN MAZONOWICZ, PGCE PRIMARY GRADUATE

AUTOMOTIVE AND MECHANICAL

Automotive Engineering with Electric Vehicles MSc

Accredited by IET and IMechE on behalf of the Engineering Council

Duration

Full time: 1 year
Part time: 2 years

Summary

Our MSc in Automotive Engineering with Electric Vehicles prepares you for a career in the complex and ever-developing automotive industry. You will be taught in a purpose-designed engineering building, by staff with exceptional knowledge and expertise in their fields. You will cover topics such as electric powertrains, vehicle dynamics and crash impact modelling.

Entry requirements

- Hold a first degree equivalent to at least a 2.2 in mechanical, automotive or motorsport engineering or a related discipline.

Further information

- For course fees and additional information see: www.brookes.ac.uk/postgraduate/courses/ae

Mechanical Engineering MSc

Accredited by IET and IMechE on behalf of the Engineering Council

Duration

Full time: 1 year
Part time: 2 years

Summary

Develop the skills to take complex products all the way from idea to fully-validated designs. This course covers research, development and practice in advanced engineering design. Using industry-relevant simulation software, you will learn the techniques to analyse and test your designs. This course will prepare you for professional practice at a senior level.

Entry requirements

- Hold a first degree equivalent to at least a 2.2 in mechanical engineering or a related discipline.

Further information

- For course fees and additional information see: www.brookes.ac.uk/postgraduate/courses/aed



You can get involved with Oxford Brookes Racing – the UK's best Formula Student team. Involving students from across the school, the team design, build and race an electric single-seater Formula Student car.



93% of students surveyed said that as a result of the course, they are more confident about independent learning.

Postgraduate Taught Evaluation Survey 2019, MSc Motorsport Engineering



Superb industry links and world-class research make Oxford Brookes one of the best places in the UK to study Engineering at postgraduate level.

Motorsport Engineering MSc

Accredited by IET and IMechE on behalf of the Engineering Council

Duration

Full time: 1 year
Part time: 2 years

Summary

Develop the skills to kickstart your career in the Motorsport industry. Our location, close to many Formula 1 teams and their supply chain, gives you unrivalled access to motorsport companies. You will be taught by lecturers with expertise in the field. This includes winning F1 race car designers and world-leading sustainable vehicle engineering researchers. Apply your knowledge by being part of the UK's number 1 Formula Student team, Oxford Brookes Racing.

Entry requirements

- Hold a first degree equivalent to at least a 2.2 in mechanical, automotive or motorsport engineering or a related discipline.

Further information

- For course fees and additional information see: www.brookes.ac.uk/postgraduate/courses/me

Racing Engine Systems MSc

Accredited by IET and IMechE on behalf of the Engineering Council

Duration

Full time: 1 year
Part time: 2 years

Summary

The MSc in Racing Engine Systems is the only programme of its kind in the world – it has been developed with the needs of modern hybrid power systems and requirements of the race engine manufacturers in mind. The programme is designed to produce highly-skilled graduates who are ready to undertake advanced design roles with major engine manufacturers and their supply chains.

Entry requirements

- Hold a first degree equivalent to at least a 2.2 in mechanical, automotive or motorsport engineering or a related discipline.

Further information

- For course fees and additional information see: www.brookes.ac.uk/postgraduate/courses/racing-engine



“I really enjoyed the breadth of topics covered on the course. The academic team is closely informed by the motorsports industry and everything we studied was highly specific to the latest Formula 1 specifications.”

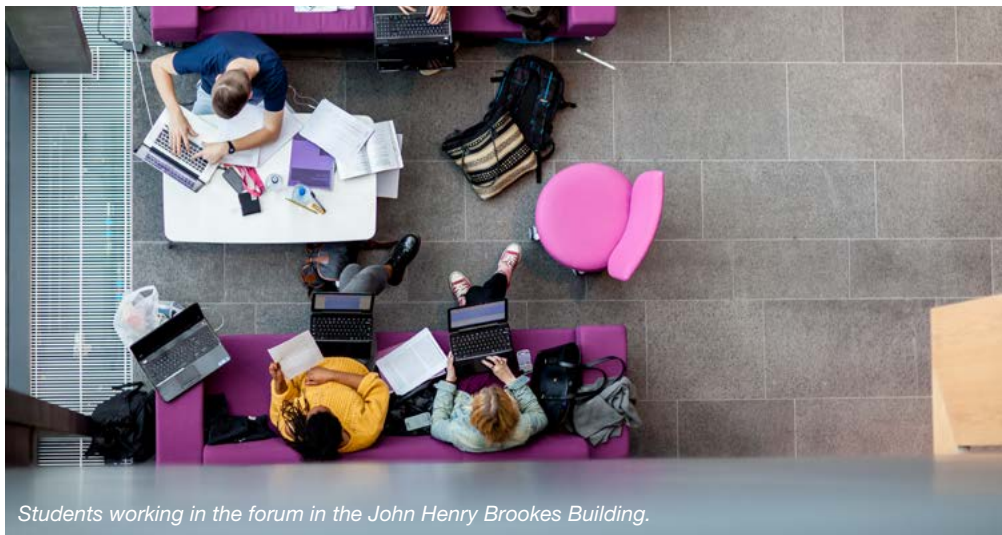
KARAN BOPIAH,
MSc RACING ENGINE
SYSTEMS GRADUATE

English Literature and Creative Writing



“My writing is sharper and more focused a year into the course. I have a greater understanding of developing a story, and appreciate the skill of writing well is not just in the task of writing itself. I’m a stronger writer than I was a year ago. Through feedback from peers and tutors I’m becoming a good editor of my work.”

SARAH STRETTON,
MA CREATIVE WRITING STUDENT



Students working in the forum in the John Henry Brookes Building.



Oxford is one of the world’s most literary cities. Write in the garden where *His Dark Materials* ends so heartbreakingly, or discover the haunts of Evelyn Waugh, CS Lewis and JRR Tolkien.

Creative Writing MA, PGDip, PGCert

Duration

Full time: 1 year
Part time: 2 years

Summary

Join a community of writers and receive support and guidance from our team of published tutors and renowned Creative Writing Fellows, to take your writing to the next level. You’ll improve your craft, develop as a writer and have access to key publishing contacts through this course.

Entry requirements

- 2.1 or above, or equivalent, in an appropriate discipline and must be able to demonstrate ability in creative writing.
- A portfolio of recent creative work must be submitted consisting of 2,000 words prose, or five poems, or a proportionate mixture of the two.
- Applicants may also be interviewed.
- If it is some time since you completed your undergraduate education and you do not meet the standard requirement, it may be possible to consider your application based on other evidence.

Further information

- For course fees and additional information see:
www.brookes.ac.uk/postgraduate/courses/creativewriting

English Literature MA, PGDip, PGCert

Duration

Full time: 1 year
Part time: 2 years

Summary

You’ll join an exciting and challenging course, covering a range of periods and genres from the Renaissance to the Contemporary. You’ll work with world class researchers and resources in literature, developing subject expertise at an advanced level. You will also carry out independent research projects in your own areas of interest.

Entry requirements

- 2.1 or above, or its equivalent, in English Literature or a related subject.
- If you do not meet the standard requirement, it may be possible to consider your application based on other evidence.

Further information

- For course fees and additional information see:
www.brookes.ac.uk/postgraduate/courses/english



The MA in Creative Writing culminates in an end of course showcase at which you will have the opportunity to present your work to literary agents and publishers.



“The University is internationally recognised as a leader in Creative Writing.”

HILARY MANTEL

HEALTH SCIENCES

Global Public Health Leadership MPH, PGDip, PGCert

Duration
Full time: 1 year
Part time: 2-5 years

Summary

The Master of Public Health in Global Public Health Leadership will prepare and improve you as a public health leader in the global context of practice. Focused on developing real-life and employment-ready skills, the programme is rooted in public health evidence. Delivered through eight distance-learning modules, you will acquire key leadership skills while remaining in your practice community or public health employment.

Entry requirements

- A degree from a higher education institution or equivalent.
- An interest in public health.
- Computer with access to the internet.

Further information

- For course fees and additional information see:
www.brookes.ac.uk/postgraduate/courses/health

Health Sciences Open Award MSc, PGDip, PGCert

Duration
Full time: 1 year
Part time: maximum of 5 years

Summary

This course allows you to build a bespoke master's degree pathway from the wide variety of modules available across the Faculty of Health and Life Sciences. It offers opportunities for bringing professional expertise and academic knowledge into dialogue.

Entry requirements

- A degree from a higher education institution or similar.
- Equivalent professional or other qualifications applicable to health and social care may be considered under some circumstances.
- Evidence of recent study (within the last five years) at degree or equivalent level is highly desirable.
- Six months' experience as a student, employee or volunteer within the health/social care sector.

Further information

- For course fees and additional information see:
www.brookes.ac.uk/postgraduate/courses/sda

Management in Health and Social Care MSc, PGDip, PGCert

Duration
Full time: 1 year
Part time: 3 years

Summary

This programme focuses on developing your insight, understanding and leadership of the complex and changing health and care environment. It will help you to manage effectively and lead with confidence. It provides you with strategic insight, business acumen and a sound understanding of operational delivery and leading systems change.

Entry requirements

- A degree from a higher education institution, or a professional qualification applicable to health and social care, or equivalent.
- Evidence of recent study (within the last five years) at degree or equivalent level.
- Six months' experience as a student, employee or volunteer within the health/social care sector (public, private or voluntary).

Further information

- For course fees and additional information see:
www.brookes.ac.uk/postgraduate/courses/mihsc

HEALTH SCIENCES

Occupational Therapy (Pre-Registration) MSc

This course is accredited HCPC, RCOT and WFOT

Duration
Full time: 2 years

Summary

This intensive professional programme of study will enable you to develop the clinical practice, research and leadership skills necessary to work in a wide variety of occupational therapy practice areas. The degree is taught both on campus and through placements in a diverse range of settings across health, social care or voluntary organisations.

Entry requirements

- UK, EU and international applicants.
- BSc honours degree at 2.2 or above (or equivalent) in a science-based subject.
- Applicants will be assessed on the demonstration of communication, team working and problem solving skills alongside qualities of caring and integrity.
- All applicants will be screened for fitness to practise. Securing a place is subject to both a satisfactory enhanced DBS (police check) and an Occupational Health clearance.

Further information

- For course fees and additional information see:
www.brookes.ac.uk/postgraduate/courses/prmot

Physiotherapy (Pre-Registration) MSc

This course is accredited by HCPC and CSP

Duration
Full time: 2 years

Summary

The MSc in Physiotherapy (Pre-Registration) is a qualifying course for graduates with a relevant first degree, providing you with the opportunity to undertake a physiotherapy course leading to registration at master's level. This course combines robust academic development with evidence-based clinical practice learning across the range of physiotherapy specialities.

Entry requirements

- UK, EU and international applicants.
- BSc honours degree at 2.1 or above (or equivalent) in a science-based subject.
- Applicants will be assessed on the demonstration of communication, team working and problem solving skills alongside qualities of caring and integrity.
- All applicants will be screened for fitness to practise. Securing a place is subject to both a satisfactory enhanced DBS (police check) and an Occupational Health clearance.

Further information

- For course fees and additional information see:
www.brookes.ac.uk/postgraduate/courses/prmp

Public Health MPH, PGDip, PGCert

Duration
Full time: 1 year
Part time: up to 5 years

Summary

The Master of Public Health focuses on the health of communities. You will discover how population health is influenced by behavioural, social and environmental factors, and how these can be modified or mitigated. Topics range from communicable diseases to climate change. We discuss how good health can be a right, not a privilege. This course will appeal to those seeking a career in public health or who are preparing for advancement in their field or career.

Entry requirements

- UK, EU and international applicants.
- Degree from a higher education institution or equivalent.
- At least six months' work experience (in public, private or voluntary sector).

Further information

- For course fees and additional information see:
www.brookes.ac.uk/postgraduate/courses/ph

Our teaching teams work collaboratively with local clinicians ensuring you learn about the latest evidence-based care.

Health Sciences and Social Work

SOCIAL WORK

Social Work MA, PGDip
Approved by Social Work England

Duration
Full time: 2 years
Part time: maximum of 5 years

Summary
Social Work is a rewarding career. You can enhance wellbeing and make a real difference to the lives of individuals, families and communities; supporting some of the most vulnerable people in society. The course consists of a mixture of classroom, distance and field-based learning in two work placements. You will gain knowledge of anti-discriminatory and anti-oppressive practice, legal and policy frameworks. You will study the fields of adult, children and mental health social care, and will learn from practising professionals and individuals with lived experiences of social work services.

- Entry requirements**
- 2.1 or above honours degree for the MA and 2.2 for the PGDip or a professional qualification equivalent to an undergraduate degree, normally in a related area.
 - GCSE Mathematics and English Language, or equivalent, to a grade C or above.
 - Basic IT skills with reliable access to the internet.
 - 12 months experience of paid or voluntary work with vulnerable people.
- Further information**
- For course fees and additional information see:
www.brookes.ac.uk/postgraduate/courses/social



Leading the way in social work

"I chose Oxford Brookes because I admired the outreach work they did. My master's at Oxford Brookes was transformative. A huge credit for this goes to the lecturers, practice educators, supervisors and fellow students."

Now graduated, Nabeela is teaching Social Work and has plans to pursue a PhD.

NABEELA TALIB, MA SOCIAL WORK GRADUATE



Our graduates are highly employable, with a high percentage obtaining social work posts upon completion of the programme.

History

History MA, PGDip, PGCert

Duration
Full time: 1 year
Part time: 2 years

Summary
Build on your interest in History, developing your knowledge and skills as a practising historian. Your modules reflect the most recent developments in various historical fields. You'll combine research training with optional modules on specific themes and conduct advanced, independent research on a dissertation topic of your choice.

- Entry requirements**
- 2.1 honours degree, or its equivalent, in an appropriate subject.
 - Applicants may be asked to send a sample of recent academic writing in English together with the application form.

- Further information**
- For course fees and additional information see:
www.brookes.ac.uk/postgraduate/courses/history



"There was such wide scope for independent thought and study within the course, the expertise of the tutors was very impressive and I particularly appreciated the dissertation workshops which were both informative and enjoyable."

ROSS BROOKS, MA HISTORY GRADUATE

JOURNALISM

Journalism MA

Duration

Full time: 1 year or 2 years with optional 12-month work placement
Part time: 2 years

Summary

Realise your ambitions in the journalism and media industries with our MA in Journalism. You'll study the evolving business and content models, and strengthen your skills in multi-platform journalism and authorship. Regular networking opportunities, guest lecturers and visits to newsrooms will put you at the centre of this dynamic industry.

Entry requirements

- A 2.2 or equivalent in any subject or an appropriate professional background and experience in the media, either working directly in journalism and media or a related function.

Further information

- For course fees and additional information see:
www.brookes.ac.uk/courses/postgraduate/journalism

“What made me set my heart on this course at Oxford Brookes was that the lecturers help and encourage students to build connections in the industry, whether through work experience or the many events hosted by the faculty. I had a gut feeling that this was the right place to begin my career.”

CHRISTINE MODAFFERI, MA DIGITAL PUBLISHING GRADUATE



★
100% of students surveyed said that they were satisfied with the quality of the MA Publishing Media course
Postgraduate Taught Experience Survey 2019

PUBLISHING

Digital Publishing MA, PGDip, PGCert

Duration

Full time: 1 year or 2 years with optional 12-month work placement
Part time: 2 years

Summary

This course provides an excellent overview of every aspect of publishing, with an emphasis on digital publishing. You will develop an understanding of the key issues facing the publishing industry in the 21st century. Our staff have extensive experience and you'll benefit from our connections with those leading the way in the industry. You will graduate with a wide range of publishing and management skills to help you succeed in the industry.

Entry requirements

- A 2.2 or equivalent in any subject or an appropriate professional background and experience in the publishing industry.

Further information

- For course fees and additional information see:
www.brookes.ac.uk/postgraduate/courses/dp

Publishing Media MA, PGDip, PGCert

Duration

Full time: 1 year or 2 years with optional work placement
Part time: 2 years

Summary

From editorial management and content development, to marketing and consumer insight, this course will help you develop fundamental skills required to succeed in the publishing industry. You'll gain an understanding of the key issues facing the publishing industry in the 21st century, and have the opportunity to develop specialist skills required for your career development.

Entry requirements

- A 2.2 or equivalent in any subject or an appropriate professional background and experience in the publishing industry.

Further information

- For course fees and additional information see:
www.brookes.ac.uk/postgraduate/courses/pubmedia

Publishing MA, PGDip, PGCert

Duration

Part time: MA: 32 months, PGDip: 2 years, PGCert: 1 year (distance learning only)

Summary

This flexible distance learning course will equip you with the skills and expertise needed to succeed in the publishing industry. You'll gain specialist knowledge in marketing, production, editorial, data analysis and writing practices. You will be supported by a tutor and sent physical textbooks to accompany each module.

Entry requirements

- A 2.1 or equivalent in any subject or demonstrable interest in the creative publishing industries, such as work experience or voluntary work in a publishing company.

Further information

- For course fees and additional information see:
www.brookes.ac.uk/postgraduate/courses/psdl

Courses within the Oxford International Centre for Publishing have a reputation for excellence, including being ranked 1st for Journalism, Publishing and PR in the Guardian University Guide 2020.

Graduate Diploma in Law (GDL) Graduate Diploma

Duration

Full time: 1 year
Part time: 2 years

Summary

Aimed at non-law graduates this course will give you the skills to progress to the Legal Practice Course for intending solicitors or the Bar Professional Training Course (BPTC) for intending barristers. You will combine academic rigour with the problem solving and research skills that will enable you to qualify and make you stand out as a legal professional or in an allied field.

Entry requirements

- You will normally have a second class degree or above and your application should also demonstrate a commitment to legal practice and the profession.
- A Certificate of Academic Standing (CAS) is required for applicants whose intention is to become a barrister and who do not hold a UK first degree. Applicants are strongly advised to apply to the Bar Standards Board (BSB) www.barstandardsboard.org.uk as soon as possible for a CAS as these can take some time to obtain.

Further information

- For course fees and additional information see: www.brookes.ac.uk/gdl

Master of Laws Commercial Law and International Trade LLM, PGDip

Duration

Full time: 1 year
Part time: 2 years

Summary

This course is suited to students from a commercial law, business, management, or economics background, who are looking to gain knowledge of the application of legal principles and mechanisms to the world of international commerce. You can focus on particular areas of commercial law and international trade to gain specialist knowledge.

Entry requirements

- Students will normally be required to have a good honours degree, or an equivalent degree awarded by a university outside the United Kingdom.
- We welcome applications from both non-law graduates and work experience-based candidates. Academic support is provided throughout the programme.
- If you are new to the academic study of law you will be advised to read a number of recommended texts by way of induction before the course begins.

Further information

- For course fees and additional information see: www.brookes.ac.uk/courses/postgraduate/commercial



“Practice-experienced members of the teaching staff, encouraged and trained us in gaining the practical skills for future employment.”

NICOLE KAPU, GRADUATE DIPLOMA IN LAW GRADUATE



“Without this course I would not have had the opportunity to undertake an internship with the United Nations.”

STEFANO CONSIGLIO, MASTER OF LAWS GRADUATE

Master of Laws Human Rights Law LLM, PGDip

Duration

Full time: 1 year
Part time: 2 years

Summary

Study the history and theoretical underpinnings of international human rights law, and human rights systems across the world. Gain understanding and experience the practical application of human rights norms in a range of contexts. Engage with issues relating to inequality, diversity, democracy and political rights.

Entry requirements

- Students will normally be required to have a good honours degree, or an equivalent degree awarded by a university outside the United Kingdom.
- We welcome applications from both non-law graduates and work experience-based candidates. Academic support is provided throughout the programme.
- If you are new to the academic study of law you will be advised to read a number of recommended texts by way of induction before the course begins.

Further information

- For course fees and additional information see: www.brookes.ac.uk/postgraduate/courses/ihrl

Master of Laws International Law LLM, PGDip, PGCert

Duration

Full time: 1 year
Part time: 2 years

Summary

Study the relations between states, international organisations and non-state actors. Engage with issues relating to global economic governance and development, the role of international organisations and interventions, liability for international crimes and dispute settlements between states and corporations.

Entry requirements

- Students will normally be required to have a good honours degree, or an equivalent degree awarded by a university outside the United Kingdom.
- We welcome applications from both non-law graduates and work experience-based candidates. Academic support is provided throughout the programme.
- If you are new to the academic study of law you will be advised to read a number of recommended texts by way of induction before the course begins.

Further information

- For course fees and additional information see: www.brookes.ac.uk/postgraduate/courses/intlaw

Master of Laws Legal Practice LLM

Duration

Part time distance learning: 13 months

Summary

The course structure recognises professional achievement and experience, and is designed to be taken alongside a legal career. Aimed at professionally qualified graduates from England and Wales, and other jurisdictions with a common law heritage. It will convert your LPC, BPTC or other professional law qualification into a master's degree.

Entry requirements

- Applicants to the programme must have a prior legal vocational qualification, such as the LPC/BPTC or their equivalent.
- The legal vocational qualification should normally have been obtained within five years of commencement of the LLM (Legal Practice), but currency can be maintained either through continued work in legal practice as a solicitor or barrister or through teaching on a legal professional training course.
- Students will be expected to demonstrate the ability to work independently in a self-directed way.

Further information

- For course fees and additional information see: www.brookes.ac.uk/courses/postgraduate/llm-in-legal-practice

Marketing, Events and Hospitality Management

EVENTS

International Events Management MSc

Duration

Full time: 1 year or 2 years with optional 12-month work placement
Part time: 2 years

Summary

Students new to events management, and those with some experience, will gain hands-on events management experience and interact with practitioners and academics. Through live case studies and being immersed in real event planning and delivery, you will experience an innovative and creative approach to your learning.

Entry requirements

- Minimum 2.2 honours degree or equivalent, in any academic discipline.
- IELTS minimum 6.0.
- Two satisfactory references.

Further information

- For course fees and additional information see:
www.brookes.ac.uk/postgraduate/courses/iem

International Events Marketing MSc

IDM Accredited

Duration

Full time: 1 year or 2 years with optional 12-month work placement
Part time: 2 years

Summary

For students new to marketing and events, and those with some events and marketing experience who wish to specialise or broaden their expertise. You will gain hands-on events marketing experience, work closely with experts, explore recent research and the challenges within the sector.

Entry requirements

- Minimum 2.2 honours degree or equivalent, in any academic discipline.
- IELTS minimum 6.0.
- Two satisfactory references.

Further information

- For course fees and additional information see:
www.brookes.ac.uk/postgraduate/courses/iemar

Tourism and Events Management MSc

Duration

Full time: 1 year or 2 years with optional 12-month work placement
Part time: 2 years

Summary

You will apply tourism and event management theory to real-life opportunities and challenges faced by organisations. Modules in event design and delivery focus on the issue of sustainability; further modules introduce key concepts in hospitality, tourism, events and consumer behaviour. You will undertake a dissertation or a consultancy project with a 'live' client and you'll be mentored by an industry professional through our Bacchus Mentoring Scheme.

Entry requirements

- Minimum 2.2 honours degree or equivalent, in any academic discipline.
- IELTS minimum 6.0.
- Two satisfactory references.

Further information

- For course fees and additional information see:
www.brookes.ac.uk/postgraduate/courses/tem

"Every hospitality management student is linked up with somebody in the industry through the Bacchus Mentoring Programme. I've loved my time here at Oxford Brookes and I've really progressed and matured."

ANDREA AGUILAR, MSc INTERNATIONAL HOSPITALITY, EVENTS AND TOURISM MANAGEMENT GRADUATE

HOSPITALITY AND TOURISM

International Hospitality, Events and Tourism Management MSc

Duration

Full time: 1 year or 2 years with optional 12-month work placement
Part time: 2 years

Summary

This course is suitable if you are looking to convert from another subject area and pursue a future career in the hospitality and tourism sector. You'll be introduced to key concepts including consumer behaviour, marketing planning, hospitality operations and strategic financial management, and you will be able to tailor your course through the optional modules. The course culminates with a dissertation or a consultancy project, working with a 'live' client. Your professional development will be supported by an industry mentor through our successful Bacchus Mentoring Scheme.

Entry requirements

- Minimum 2.2 honours degree or equivalent, in any academic discipline.
- IELTS minimum 6.0.
- Two satisfactory references.

Further information

- For course fees and additional information see:
www.brookes.ac.uk/postgraduate/courses/ihtman

International Hotel and Tourism Management MSc

Duration

Full time: 1 year or 2 years with optional 12-month work placement
Part time: 2 years

Summary

This specialist course builds on your existing knowledge and experience in the international hospitality and tourism industry and gives you the extra push to accelerate your career. You will explore key management and leadership issues from a corporate, strategic perspective and optional modules enable you to tailor the course to your own aims. Your professional development will be supported by an industry mentor through our successful Bacchus Mentoring Scheme. The course culminates with a dissertation or a consultancy project, working with a 'live' client.

Entry requirements

- Minimum 2.2 honours degree or equivalent in a Business, Hospitality or Tourism discipline
- Business Experience.

Further information

- For course fees and additional information see:
www.brookes.ac.uk/postgraduate/courses/ihtman

International Tourism Management MSc

Duration

Full time: 1 year or 2 years with optional 12-month work placement
Part time: 2 years

Summary

The contemporary international tourism industry continues to face a growing range of challenges. You will explore how destinations and organisations may respond to these challenges through the development of creative solutions, such as new products or services, or alternative ways of doing business. Your professional development will be supported by an industry mentor through our successful Bacchus Mentoring Scheme.

Entry requirements

- Minimum 2.2 honours degree or equivalent, in any academic discipline.
- IELTS minimum 6.0.
- Two satisfactory references.

Further information

- For course fees and additional information see:
www.brookes.ac.uk/postgraduate/courses/itm



Hospitality courses offer each student an industry mentor who is a highly-experienced professional in the international hospitality, events or tourism industries.

Marketing, Events and Hospitality Management

MARKETING

Digital Marketing MSc

CIM and IDM accredited

Duration

Full time: 1 year or 2 years with optional 12-month work placement for September start
Part time: 2 years

Summary

You will develop a strong foundation in digital marketing theory and practice, combined with a unique perspective on how digital marketing integrates into an overall marketing framework. The current fast-changing media and technology environment presents many challenges to marketers. You will develop the skills to analyse complex marketing situations in the digital environment, and reach decisions on solutions and practical actions.

Entry requirements

- Minimum 2.2 honours degree or equivalent, in any academic discipline.
- IELTS minimum 6.0.
- Two satisfactory references.

Further information

- For course fees and additional information see: www.brookes.ac.uk/postgraduate/courses/digitalmarketing

International Luxury Marketing MSc

CIM and IDM accredited

Duration

Full time: 1 year or 2 years with optional 12-month work placement for September start
Part time: 2 years

Summary

You will learn about planning and applying luxury marketing management strategies with an international perspective. The course integrates academic and practical knowledge with practical case studies and live scenarios. You will learn to assess situations from financial, commercial and cultural standpoints, to reach decisions on solutions and actions.

Entry requirements

- Minimum 2.2 honours degree or equivalent, in any academic discipline.
- IELTS minimum 6.0.
- Two satisfactory references.

Further information

- For course fees and additional information see: www.brookes.ac.uk/postgraduate/courses/luxury

Marketing and Brand Management MSc

CIM and IDM Accredited

Duration

Full time: 1 year or 2 years with optional 12-month work placement for September start
Part time: 2 years

Summary

This course focuses on planning and applying brand management strategies. You will learn about the importance of brand management within marketing and business management. You will develop a strong foundation in marketing theory and practice, combined with a specialist perspective on brand management.

Entry requirements

- Minimum 2.2 honours degree or equivalent, in any academic discipline.
- IELTS minimum 6.0.
- Two satisfactory references.

Further information

- For course fees and additional information see: www.brookes.ac.uk/postgraduate/courses/marketingbrand



Marketing and Hospitality courses offer a work placement year.

MARKETING

Marketing MSc

CIM and IDM Accredited

Duration

Full time: 1 year or 2 years with optional 12-month work placement for September start
Part time: 2 years

Summary

The MSc in Marketing gives you a strong foundation in marketing theory and practice. With live case studies, consultancy projects and skills workshops, we encourage an innovative and creative approach to your learning. You will combine theory and practice to develop the key transferable skills that employers are looking for.

Entry requirements

- Minimum 2.2 honours degree or equivalent, in any academic discipline.
- IELTS minimum 6.0.
- Two satisfactory references.

Further information

- For course fees and additional information see: www.brookes.ac.uk/postgraduate/courses/marketing

Marketing Communications Management MSc

CIM and IDM Accredited

Duration

Full time: 1 year or 2 years with optional 12-month work placement for September start
Part time: 2 years

Summary

You will be well prepared for a career as a professional marketer with a particular focus on marketing communications. This could include working in agencies specialising in advertising, communications, public relations, digital marketing communications or social media.

Entry requirements

- Minimum 2.2 honours degree or equivalent, in any academic discipline.
- IELTS minimum 6.0.
- Two satisfactory references.

Further information

- For course fees and additional information see: www.brookes.ac.uk/postgraduate/courses/marketingcomms

Marketing and Entrepreneurship MSc

Duration

Full time: 1 year or 2 years with optional 12-month work placement for September start
Part time: 2 years

Summary

This programme appeals to students with an interest in working in new start-ups, particularly in a marketing role and those who value marketing for business success. You will develop a strong foundation in marketing theory and practice, alongside a thorough grounding of entrepreneurial theory and practice. You will develop the skills to bring these two areas together to bring new business ideas successfully to market.

Entry requirements

- Minimum 2.2 honours degree or equivalent, in any academic discipline.
- IELTS minimum 6.0.
- Two satisfactory references.

Further information

- For course fees and additional information see: www.brookes.ac.uk/postgraduate/courses/markentre

Acute Care of the Older Person with Frailty PGCert

Duration

Part time: 1 year

Summary

This course enables UK registered healthcare professionals to develop their knowledge, skills and assessment of care and management of older patients with frailty who have complex care needs and are cared for in an acute care environment. Our specialist lecturers maintain excellent practice links locally and across the region to give you the highest quality of teaching.

Entry requirements

- Have a first degree, or prior learning at the equivalent, appropriate level.
- Professional registration with the relevant nursing or allied health professional body in the UK.
- Minimum of one year post-registration experience in a relevant clinical area.
- Working in a relevant clinical environment in which you can achieve the clinical skills required.

Further information

- For course fees and additional information see: www.brookes.ac.uk/postgraduate/courses/acopf

Advanced Clinical Practice MSc, PGDip, PGCert

Duration

Part time: MSc: 3-5 years, PGDip: 2-4 years, PGCert: 1-2 years

Summary

This course is designed for health care professionals working at, or towards an advanced level of practice. You will develop knowledge and skills to practise at an advanced level, encompassing the four pillars of practice: clinical practice, leadership and management, education and research.

Entry requirements

- First degree, or prior learning at the equivalent appropriate level.
- Minimum of three years' post-registration experience in clinical practice.
- Employed in a suitable clinical role in the UK for the achievement of clinical learning outcomes.
- Evidence of current professional registration with the NMC (Nursing and Midwifery Council), HCPC (Health and Care Professions Council), or GPhC (General Pharmaceutical Council) in the UK.

Further information

- For course fees and additional information see: www.brookes.ac.uk/postgraduate/courses/hcp

Advanced Nursing Practice MSc, PGDip, PGCert

Duration

Part time: MSc: 3-5 years, PGDip: 2-4 years, PGCert: 1-2 years

Summary

This course is designed for nurses working at, or towards an advanced level of practice. You will develop knowledge and skills to practise at an advanced level, encompassing the four pillars of practice: clinical practice, leadership and management, education and research.

Entry requirements

- Have a first degree, or prior learning at the equivalent appropriate level.
- Have a minimum of three years' post-registration experience in clinical practice.
- Be employed in a suitable clinical role in the UK for the achievement of clinical learning outcomes.
- Have evidence of current professional registration with the NMC (Nursing and Midwifery Council).

Further information

- For course fees and additional information see: www.brookes.ac.uk/postgraduate/courses/adnursingpractice



We also offer an Advanced Clinical Practitioner Apprenticeship. For more information visit www.brookes.ac.uk/apprenticeships

Cardiorespiratory Practice PGCert

Duration

Part time: 1 year

Summary

This course gives UK registered healthcare professionals the opportunity to develop their knowledge, skills, planning, delivery and evaluation of care. This programme is for those wanting to develop their management of critically ill patients with complex care needs who are being cared for in a cardiac and/or respiratory care environment.

Entry requirements

- Have a first degree, or prior learning at the equivalent appropriate level.
- Professional registration with the relevant nursing or allied health professional body in the UK.
- Minimum of one year post-registration experience in a relevant clinical area.
- Working in a relevant clinical environment in which you can achieve the clinical skills required.

Further information

- For course fees and additional information see: www.brookes.ac.uk/postgraduate/courses/cp

District Nursing PGDip *Approved by the Nursing and Midwifery Council*

Duration

Full time: 1 year
Part time: 2 years

Summary

This innovative course is aimed at community nurses wishing to prepare for (or consolidate) a leadership role. It will strengthen your leadership attributes to prepare for the changing face of community nursing. The course is centred on practice and you will spend a large amount of time in a practical environment.

Entry requirements

- Registered on Part One (Adult/RN1/RNA) of the NMC register as an Adult Nurse and active UK Nurse.
- Evidence of recent study at level 6 on entry.
- Secured a student place within an NHS Trust.
- All applicants will be screened for fitness for practice and a Disclosure and Barring Service (DBS) check will be made.

Further information

- For course fees and additional information see: www.brookes.ac.uk/postgraduate/courses/csp

Emergency Nursing Practice PGCert

Duration

Part time: 1 year

Summary

This course provides UK registered healthcare professionals the opportunity to develop their knowledge, skills, planning, delivery and evaluation of care relating to the management of patients with differing care needs who are being cared for in an emergency department. Our specialist lecturers maintain excellent practice links locally and across the region to give you the highest quality of teaching.

Entry requirements

- Have a first degree, or prior learning at the equivalent, appropriate level.
- Professional registration with the relevant nursing or allied health professional body in the UK.
- Minimum of one year post-registration experience in a relevant clinical area.
- Working in a relevant clinical environment in which you can achieve the clinical skills required.

Further information

- For course fees and additional information see: www.brookes.ac.uk/postgraduate/courses/enp

The Oxford School of Nursing and Midwifery works to three education and research themes: digital health, translational education and research and public health. These themes are integrated in our nursing and midwifery lessons and supported by the Oxford Biomedical Research Committees and the Oxford Academic Health Sciences Centre.

Nursing and Midwifery

Midwifery – Pre-Registration MSc

Approved by the Nursing and Midwifery Council

Duration

Full time: 3 years

Summary

Our master's degree gives graduates the chance to undertake a midwifery course leading to becoming a registered midwife. Our curriculum is designed to give you the knowledge, skills and attitudes required to influence improvements in practice, and support you to develop your own professional responsibility towards advancing the profession.

Entry requirements

- Honours degree 2.1 or above, or equivalent.
- GCSE Mathematics, Science and English at Grade C or above, or equivalent.
- Occupational Health Clearance and Enhanced Disclosure and Barring Service (DBS) clearance.

Further information

- For course fees and additional information see: www.brookes.ac.uk/postgraduate/courses/prmm

Minor Injury and Illness Management PGCert

Duration

Part time: 1 year

Summary

This course enables UK registered healthcare professionals to gain experience in preparation for practice as an Emergency Care Practitioner (ECP) or within minor injury or illness focused care. You will critically analyse the assessment, diagnosis management and treatment of patients within a range of minor injury and illness conditions across the age spectrum.

Entry requirements

- Have a first degree, or prior learning at the equivalent, appropriate level.
- Hold professional registration with the relevant nursing or allied health professional body/council in the UK.
- Minimum of three years' post-registration experience in a relevant care environment.
- Employed in a role that will support development of clinical skills during the programme.
- Working in a relevant clinical environment in which you can achieve the clinical skills required.

Further information

- For course fees and additional information see: www.brookes.ac.uk/postgraduate/courses/miim

Nursing (Mental Health) Pre-Registration MSc

Approved by the Nursing and Midwifery Council

Duration

Full time: 2 years with APEL

Summary

Our master's degree gives you the chance to undertake a Mental Health Nursing course leading to registration with the Nursing and Midwifery Council. Our curriculum is designed to give you the knowledge, skills and attitudes required to influence improvements in practice, and support you to develop your own professional responsibility towards advancing the profession.

Entry requirements

- Honours degree 2.2 or above, or equivalent, preferably in a health/science related subject.
- GCSE Mathematics, Science and English at Grade C or above, or equivalent.
- 700 hours of relevant healthcare experience
- Occupational Health Clearance and Enhanced Disclosure and Barring Service (DBS) clearance.

Further information

- For course fees and additional information see: www.brookes.ac.uk/postgraduate/courses/prmmh

Nursing Studies (Leadership in Clinical Practice) MSc, PGDip, PGCert

Duration

Part time: up to 5 years

Summary

This course aims to raise your practice to an advanced level. It will enable you to progress as a senior practitioner, educator, researcher or manager. You will develop your practice with confidence, knowing that it is based on the best available evidence to allow you to make effective nursing interventions.

Entry requirements

- Qualified nurse with up-to-date and current registration.
- Employed within current clinical nursing practice.
- Minimum of one year's post-registration experience.
- UK first degree or equivalent overseas degree from a recognised institution.
- Reliable access to the internet.

Further information

- For course fees and additional information see: www.brookes.ac.uk/postgraduate/courses/nursing

Specialist Community Public Health Nursing (Health Visiting and School Nursing) PGDip

Approved by the Nursing and Midwifery Council

Duration

Full time: 1 year

Part time: 2 years

Summary

This innovative course enables you to develop your practice as a specialist public health nurse. You will complete the programme as a collaborative public health practitioner, who is able to lead practice forward and work in partnership with clients and other professions and agencies.

Entry requirements

- Registered on Part One (Adult/RN1/RNA) of the NMC register as an Adult Nurse and active UK Nurse.
- Evidence of recent study at level 6 on entry.
- Secured a student place within an NHS Trust.

Further information

- For course fees and additional information see: www.brookes.ac.uk/postgraduate/courses/scphn

Courses are underpinned by expertise from the Oxford Institute for Nursing, Midwifery and Allied Health Research (OxINMAHR), which is based at Oxford Brookes.



Students who have graduated from any pre-registration branch of nursing or midwifery from Oxford Brookes University are eligible to become members of the Radcliffe Guild, founded in 1925.

Our midwifery programmes have been accredited as Baby Friendly by UNICEF, meeting rigorous international evidence-based standards.

PLANNING

Historic Conservation

MSc, PGDip, PGCert

Accredited by RICS and RTPI,
and recognised by IHBC

Duration

Full time: 1 year

Part time: 2 years

Summary

This course places you at the centre of the field of historic conservation, giving you the skills and expertise needed to shape the future through the buildings and places we value from the past. The multidisciplinary teaching programme will help you acquire a well-rounded understanding of conservation theory and practice as well as develop your own independent professional judgement. Regular field trips and workshops will allow you to apply your learning practically. Frequent guest lectures mean you'll be taught by leading specialists from across the sector.

Entry requirements

- Hold a 2.1 undergraduate honours degree (or international equivalent).

Further information

- For course fees and additional information see:
www.brookes.ac.uk/postgraduate/courses/hca



“The practical element to this course was one of the key factors in choosing it over other courses. The opportunity to mix with part and full time students who were new to the subject and already working in the sector meant that as a group we had a wealth of knowledge which we were able to pool. This has subsequently helped me in my own job.”

SAMANTHA ALLEN, MSc HISTORIC CONSERVATION GRADUATE

PLANNING

Planning PGDip

Accredited by RTPI

Duration

Full time: 1 year

Part time: 2 years

Summary

This postgraduate diploma extends the skills, knowledge and critical understanding of planning, that you developed on an undergraduate course, to a professional level of expertise. This course is centred on core modules that provide an in-depth understanding of professional planning practice. You also have the opportunity to broaden out your skills and knowledge by specialising in a specific area of planning practice.

Entry requirements

The course is primarily open to candidates progressing from the final year of an Royal Town Planning Institute (RTPI) approved undergraduate programme at Oxford Brookes.

These will be our bachelor programmes in:

- BA (Hons) Planning and Property Development
- BA (Hons) Urban Design, Planning and Development
- or graduates from our recent past courses, such as BA (Hons) City and Regional Planning.

Further information

- For course fees and additional information see:
www.brookes.ac.uk/postgraduate/courses/pgp

Spatial Planning Studies Qualifying Certificate

Duration

Part time: 1 year

Summary

This certificate provides an access route to the School of the Built Environment's Royal Town Planning Institute (RTPI) and Royal Institution of Chartered Surveyors (RICS) accredited MSc in Spatial Planning. This course is ideal for students who do not have the usual academic qualifications necessary for entry onto the course. You will develop your understanding of planning systems and processes, as well as a range of issues and themes key in contemporary spatial planning.

Entry requirements

- GCSE (or equivalent) in Mathematics and English.
- At least three years' suitable experience within the field of planning – in an advanced technical or administration post.

Further information

- For course fees and additional information see:
www.brookes.ac.uk/postgraduate/courses/csps

Spatial Planning MSc, PGDip

Accredited by RTPI and RICS

Duration

Full time: 1 year

Part time: 2 years

Summary

This programme is the benchmark qualification for those wishing to enter the planning profession and is fully accredited by both the Royal Town Planning Institute (RTPI) and Royal Institution of Chartered Surveyors (RICS). It takes a broad approach to the 'traditional' field of city and regional or town and country planning. You will learn to integrate concerns across the board, including those of economy, climate change, and social needs.

Entry requirements

- Hold a 2.1 undergraduate honours degree (or international equivalent) in any discipline.

Further information

- For course fees and additional information see:
www.brookes.ac.uk/postgraduate/courses/sp

Planning and Urban Design



Prachi Rampuria studied MA Urban Design at Oxford Brookes and is now working as an urban designer at PDP London.

“I was hired as an urban designer to help develop the urban design portfolio. We’ve been working on projects in a lot of different contexts and also on different scales – ranging from a master plan on 700 hectares in pristine Cuba, to understanding what the interface would be with a public space for a very small building in London. Because of this range, the learning curve has been quite immense, and it’s been a great opportunity to apply what we learnt back at Oxford Brookes in practice.”

PRACHI RAMPURIA, MA URBAN DESIGN GRADUATE



Environmental Impact Assessment and Management MSc

Accredited by RTPI as a Specialist Programme. Environmental Surveyor pathway is RICS accredited

Duration

Full time: 12 months (September start), 17 months (January start)
Part time: 24 months (September start), 29 months (January start), (distance learning only)

Summary

Designed in close consultation with industry, this course reflects the latest conceptual thinking and international best practices across the development and planning sectors. You'll gain the knowledge and experience to devise innovative and effective sustainable solutions. Our approach to learning will give you the opportunity to apply your knowledge to real-world case studies.

Entry requirements

- Hold a 2.1 undergraduate honours degree (or international equivalent).

Further information

- For course fees and additional information see: www.brookes.ac.uk/postgraduate/courses/environmental-impact

Infrastructure Planning and Sustainable Development MSc, PGDip, PGCert

MSc accredited by RTPI

Duration

Full time: 12 months (September start), 17 months (January start)
Part time: 24 months (September start), 29 months (January start), (distance learning only)

Summary

This course will prepare you to lead on the planning and delivery of infrastructure to support inclusive and sustainable development. By engaging with new and innovative thinking on infrastructure, you'll learn to respond to the crucial needs of rapidly growing cities. This course will prepare you to engage with more holistic approaches to decision making and problem solving in order to meet the sustainability challenges of the 21st century.

Entry requirements

- Hold a 2.1 undergraduate honours degree (or international equivalent).

Further information

- For course fees and additional information see: www.brookes.ac.uk/postgraduate/courses/isd

Urban Design MA, PGDip, PGCert

MA accredited by RICS and accredited by RTPI as a Specialist Programme

Duration

Full time: 1 year
Part time: 2 years

Summary

This course brings together theory and design practice to develop your urban design skills. You'll engage with contemporary and future global issues including climate change, urban intensification, affordable housing and biodiversity. You will apply your learning to worldwide case studies and work on projects that reflect the industry, strengthening your knowledge and professional expertise.

Entry requirements

- Hold a 2.1 undergraduate honours degree (or international equivalent) in a related design and planning discipline.

Further information

- For course fees and additional information see: www.brookes.ac.uk/postgraduate/courses/ud



Widely recognised as a leading educator in environment, design and development subjects, our courses are accredited by various bodies and boards throughout the industry and the professions.

Real Estate and Construction

CONSTRUCTION

Building Information Modelling and Management MSc

Accredited by RICS and CIOB

Duration

Full time: 12 months (Sept start), 17 months (Jan start)
Part time: 24 months (Sept start), 29 months (Jan start) (distance learning only)

Summary

This programme has been designed to meet the challenging and rapidly evolving needs of the built environment sector in respect to the emergence of Building Information Modelling (BIM) as a working practice. Throughout this course you will apply your learning to projects that are rooted in real-world challenges, providing you with invaluable experience to take into the workplace.

Entry requirements

- Hold a 2.1 undergraduate honours degree (or international equivalent).
- Practitioners with considerable experience/alternative qualifications are encouraged to apply.

Further information

- For course fees and additional information see: www.brookes.ac.uk/postgraduate/courses/bimm

Construction Project Management MSc

Accredited by RICS and CIOB.

Duration

Full time: 12 months (Sept start), 17 months (Jan start)
Part time: 24 months (Sept start), 29 months (Jan start) (distance learning only)

Summary

You will develop a broad range of management skills and knowledge including Building Information Modelling (BIM), project finance, technology, and procurement by working on real-life problems as experienced by the construction industry, consultants and clients. This course is tailored to students with a background in the construction industry who want to develop their careers as construction managers.

Entry requirements

- Hold a 2.1 undergraduate honours degree (or international equivalent) in a construction-related discipline.
- Practitioners with considerable experience/alternative qualifications are encouraged to apply.

Further information

- For course fees and additional information see: www.brookes.ac.uk/postgraduate/courses/cpm

Project Management in the Built Environment MSc

Accredited by RICS and CIOB

Duration

Full time: 12 months (Sept start), 17 months (Jan start)
Part time: 24 months (Sept start), 29 months (Jan start) (distance learning only)

Summary

The MSc in Project Management in the Built Environment is designed to meet the growing demand for project managers in the industry who can oversee the entire life cycle of any project, including unique and specialist developments. From leadership to construction law, on this course you'll gain skills necessary to allow you to realise your ambitions within the sector.

Entry requirements

- Hold a 2.1 undergraduate honours degree (or international equivalent) in any discipline.
- Practitioners with considerable experience/alternative qualifications are encouraged to apply.

Further information

- For course fees and additional information see: www.brookes.ac.uk/postgraduate/courses/pmbe

If you're interested in infrastructure development, see our course in Infrastructure Planning and Sustainable Development on page 63.

You'll work in labs which mimic professional environments and are designed to facilitate collaboration and design work. All labs are equipped with state-of-the-art software for the development of your work.

CONSTRUCTION AND REAL ESTATE

Quantity Surveying and Commercial Management MSc

Accredited by RICS and CIOB

Duration

Full time: 12 months (Sept start), 17 months (Jan start)
Part time: 24 months (Sept start), 29 months (Jan start) (distance learning only)

Summary

This course is tailored to the employment needs of the industry. You will deepen your knowledge of key specialist areas from quantification, procurement and tendering, value management, contract administration, the application of technology in these areas and sustainable environments, among others. You'll apply your learning and expand your expertise by working on real-world projects and complex challenges.

Entry requirements

- Hold a 2.1 undergraduate honours degree (or international equivalent) in any discipline.
- Practitioners with considerable experience/alternative qualifications are encouraged to apply.

Further information

- For course fees and additional information see: www.brookes.ac.uk/postgraduate/courses/qscm

Real Estate MSc

Accredited by RICS

Duration

Full time: 1 year

Summary

This course is a conversion programme for graduates from other academic disciplines and is accredited by the Royal Institution of Chartered Surveyors (RICS). The programme will provide you with all the necessary skills and knowledge to excel in the real estate profession and will prepare you for the challenge of completing the Assessment of Professional Competence (APC) required to become a chartered surveyor.

Entry requirements

- Hold a 2.1 undergraduate honours degree (or international equivalent) in a non-real estate subject.

Further information

- For course fees and additional information see: www.brookes.ac.uk/postgraduate/courses/realstate

Real Estate Investment Finance MSc, PGDip

MSc accredited by RICS

Duration

Part time: 18 months (distance learning only)

Summary

The distance learning Real Estate Investment Finance programme has been designed for real estate professionals across all sectors, as well as fund managers and investment bankers, who would like to develop their understanding of real estate as a financial asset in an investment portfolio. The programme is designed to offer you a flexible and innovative way to study from home.

Entry requirements

- Hold a 2.1 undergraduate honours degree (or international equivalent) or above.
- It is also desirable to have at least two years' relevant experience in the workplace.

Further information

- For course fees and additional information see: www.brookes.ac.uk/postgraduate/courses/reif

"Real Estate at Oxford Brookes has a great reputation and it was my dream to study in Oxford. The course surpassed my expectations, with practice-based teaching, abundant field trips, intensive career events, small class sizes and perfect diversity."

XIA WU, MSc REAL ESTATE GRADUATE

Social Sciences and Psychology

66

PSYCHOLOGY

Psychology

MSc, PGDip, PGCert

Accredited by the British Psychological Society as conferring eligibility for graduate membership of the society and establishes the Graduate Basis for Chartered Membership (MSc only).

Duration

Full time: 1 year

Part time: 2 years

Summary

This conversion course enables graduates with a non-psychology degree to gain a qualification in psychology that confers eligibility for graduate membership of the British Psychological Society. This course offers you a grounding in key theories, methods and the practice of psychology as well as training in a range of research paradigms, methods and measurement techniques.

Entry requirements

- A 2.1 honours degree or above awarded by a recognised institution of higher education in the UK or overseas.

Further information

- For course fees and additional information see: www.brookes.ac.uk/postgraduate/courses/psy



“Through the course, I have been able to focus my research into looking at sleep problems in female gymnasts training and competing at an intermediate level, which was fantastic.”

MOLLIE CLAY, MSc PSYCHOLOGY, STUDENT

At the Babylab, a team of dedicated researchers investigate current issues in Developmental Psychology, studying how children learn about the world around them.



Studying Psychology at Oxford Brookes provides the opportunity to receive British Psychology Society accreditation – the first step towards becoming recognised as a chartered psychologist.

67

SOCIAL SCIENCES

Anthropology

Graduate Diploma

Duration

Full time: 9 months

Part time: 18 months

Summary

You'll explore the holistic and comparative breadth of anthropology, including social, cultural, biological and evolutionary perspectives. You'll have the flexibility to concentrate on a subfield and to explore their interconnections through small group and individual tutorials. You'll gain a qualification in anthropology at advanced undergraduate level, joining a community of research scholars undertaking internationally recognised research.

Entry requirements

- An undergraduate degree or equivalent qualification is required.

Further information

- For course fees and additional information see: www.brookes.ac.uk/postgraduate/courses/agd

International Relations

MA, PGDip, PGCert

Duration

Full time: 1 year

Part time: 2 years

Summary

You'll explore the central foundations of the contemporary discipline of international relations. You'll gain understanding and engage with trends taking place in modern society, and take part in critical reflection with each other and with members of the faculty.

You can also study this course as a distance learner

Entry requirements

- A second-class honours degree from a university in the UK or an equivalent qualification from countries outside the UK. The degree should be in an appropriate discipline.

Further information

- For course fees and additional information see: www.brookes.ac.uk/postgraduate/courses/intrel
- Distance learners visit: www.brookes.ac.uk/postgraduate/courses/intreld

International Security

MA, PGDip, PGCert

Duration

Full time: 1 year

Part time: 2 years

Summary

You'll specialise in important aspects of world politics and international relations. You'll cover both the traditional focus on the security of states and debates centred on 'human security' in a variety of contexts – and you'll consider a range of practices that contribute to our understanding of security and insecurity.

Entry requirements

- A second-class honours degree from a university in the UK or an equivalent qualification from countries outside the UK. The degree should be in an appropriate discipline.

Further information

- For course fees and additional information see: www.brookes.ac.uk/postgraduate/courses/intsec

“I really enjoyed my time at Oxford Brookes and would recommend the university to anyone. The Department of Social Sciences has a lot of great, dedicated lecturers who will do their best and beyond to help you succeed.”

MARTIN MOGSTAD, SOCIAL SCIENCES GRADUATE

A student preparing food in our nutrition kitchen.



Applied Human Nutrition MSc, PGDip, PGCert

Accredited by the Association for Nutrition (AfN)

Duration

Full time: MSc: 1 year, PGDip: 8 months, PGCert: 8 months

Part time: MSc: 2 years, PGDip: 20 months

Summary

Applied Human Nutrition is a practical, research driven master's course detailing the science behind the nutritional requirements of humans to facilitate health from preconception to old age. The course is suited to graduates with an interest in acquiring expertise in nutrition, and who want a career as registered nutritionists.

Entry requirements

- 2.2 honours degree minimum in a scientific discipline.
- Two satisfactory references (one of these must be an academic reference).
- If you do not have these academic qualifications, you could still be offered a place on this course if you can show evidence of the potential to succeed based on professional and/or related experiences.

Further information

- For course fees and additional information see: www.brookes.ac.uk/postgraduate/courses/ahn

Applied Sport and Exercise Nutrition MSc, PGDip

Accredited by the Sport and Exercise Nutrition Register (SENr)

Duration

Full time: MSc: 1 year, PGDip: 8 months

Part time: MSc: 2 years, PGDip: 20 months

Summary

This course focuses on the role of nutrition in the optimisation of health and physical performance. It is designed to fulfil the needs of students who want to work with a range of populations to improve their health, fitness or sporting performance. Applications are encouraged from graduates who have a background in sport and exercise science, human nutrition or a related scientific subject.

Entry requirements

- A 2.1 honours degree or above in a related scientific subject from a recognised institution of higher education.
- Two satisfactory references (one of these must be an academic reference).
- If you do not have these academic qualifications, you could still be offered a place on this course if you can show evidence of the potential to succeed based on professional and/or related experiences.

Further information

- For course fees and additional information see: www.brookes.ac.uk/postgraduate/courses/asen



“Knowing that the relationships I’d built up with the individuals I met at Oxford Brookes didn’t just end when the course ended was a huge positive. It really helps knowing there’s always someone to offer great advice if needed.”

**LINDSAY HOLDEN, MSc
APPLIED SPORT AND
EXERCISE NUTRITION
GRADUATE**

Pathway courses

Pre-sessional English

Our pre-sessional English courses help you meet the language requirements of your degree, and can be combined with pre-master's courses.

Pre-sessional English is taught in 6-12 week blocks at four different levels. You can take consecutive course blocks until you reach the level required for your degree course.

The tables below show approximately how long you need to study depending on your current and required language level.

Postgraduate courses

The table below is based on obtaining IELTS 6.0 with 6.0 in reading and writing, 5.5 in speaking and listening (required for most Oxford Brookes postgraduate courses).

| Current IELTS level | Duration | Start date(s) |
|-------------------------------------|-----------------------------|----------------------------|
| 4.5 with at least 4.0 in all skills | 36 weeks (over 3 semesters) | September |
| 5.0 with at least 4.5 in all skills | 24 weeks (over 2 semesters) | September |
| 5.5 with at least 5.0 in all skills | 12 weeks (over 1 semester) | September, January or June |
| 6.0 with at least 5.5 in all skills | 12 or 6 weeks | June or July |
| 6.5 with at least 5.5 in all skills | 6 week course | June or July |

Course fees vary depending on entry point and length of course. Please see our website for more information.



Find out more at www.brookes.ac.uk/international/pre-sessional



Find out more at www.brookes.ac.uk/international/premasters

Pre-Master's Courses

If you do not meet the minimum academic requirements for our postgraduate courses, you may still be able to apply for one of our pre-master's programmes.

These courses are designed to develop your subject knowledge, study skills and academic language level in preparation for your master's degree. You can choose from one or two semesters depending on your needs.

Why choose a pre-master's course at Oxford Brookes?

- Once you enrol you will have a guaranteed pathway to your master's by passing with appropriate grades.
- Study from just 12-24 weeks depending on your needs.
- You will have a personal academic adviser to support your studies and help you make the right decisions for your future.

| Course | Duration | Start date(s) | 2021/22 course fee* | IELTS required |
|---|--|---------------------------|-----------------------|--|
| Pre-Master's Certificate: Study Skills | 1 semester | January | £6,290 | 7.0 (6.5 in all skills) or native/near-native speaker |
| Pre-Master's Certificate: English Language and Study Skills | 1 semester | September, January or May | £6,290 | 6.0 (6.0 in reading and writing and 5.5 in other skills) |
| Pre-Master's Diploma | 2 semesters | September or January | £12,550 | 5.5 (5.5 in each skill) |
| Two-Year Master's Degree | 2 years (Pre-master's followed by master's degree) | September or January | £12,550 (year 1 only) | 5.5 (5.5 in each skill) |

*Fees quoted are for 2021-22 academic year only – please note that tuition fees may increase in subsequent years both for new and continuing students.

Research degrees

Research at Oxford Brookes enjoys an international reputation, attracting high-quality staff and students as well as major funded projects.

A research degree from Oxford Brookes will help you develop your skills and discover new concepts, while also adding to the knowledge base of the academic community.

As a research student you will join a vibrant and supportive environment and benefit from expert supervision. You will also have access to a strong programme of research training led centrally by the Oxford Brookes Graduate College, and in each faculty through their Doctoral Training Programmes. Together they organise research methodology courses and seminars, careers planning and advice, and the Research Students' Forum.

Each of our academic departments and schools is engaged in a diverse range of research activities and much of our research is carried out within our research centres, many of which have built national and international reputations, such as the Oxford Institute for Sustainable Development and Centre for Movement, Occupational and Rehabilitation Sciences.

For a full list of research areas within each school and department, please visit the departmental pages on our website:

www.brookes.ac.uk/studying/research

A number of scholarships and bursaries are also available:
www.brookes.ac.uk/studentships

“The research training that’s offered at Oxford Brookes is very comprehensive. I attended many workshops and seminars in my first year.”

PARVATI PERMAN-HOWE, DEPARTMENT OF BIOLOGICAL AND MEDICAL SCIENCES

94% of our research is internationally recognised.

(Research Excellence Framework 2014)

41% increase in research funding following REF 2014.

59% of our research is world leading or internationally excellent.

(Research Excellence Framework 2014)

Learning resources

Oxford is one of Europe’s major cultural, educational, scientific and technological centres, making it the perfect city in which to reach your academic potential. As a student at Oxford Brookes we will ensure you have everything you need to make the most of your time here.

Whether looking for a quiet place to work or in need of open spaces our libraries offer a professional space to support your postgraduate studies. You will have access to:

- 24/7 library opening during semester in our Headington campus
- 400,000 paper-based journals and books
- Over 25,000 online resources
- 1,150 study spaces

In addition, our knowledgeable and supportive library staff are here to help you search for books, journals, or past exam papers and dissertations.

We have over 1,000 open-access computers across the university, and free Chromebook laptops on campus that you can borrow to support your studies.

Located near to over 1,400 hi-tech firms and a number of science parks, Oxford Brookes has harnessed strong links with organisations in business, publishing, hospitality and engineering. This provides you with opportunities to develop professional connections whilst you study.

We also offer mentoring schemes in different subject areas, matching you with a senior figure from industry who shares their experience and guidance to help enhance your professional development.

Ashmolean Museum, Oxford



Headington campus library



“Studying at Oxford Brookes was fantastic; the campus is in a beautiful location. The social side was amazing too, with many options for relaxing with friends or for some lively nights out at the Students’ Union.”

ADAM DARRAH, GENERALIST TD AT DOUBLE NEGATIVE VISUAL EFFECTS, MSc DIGITAL MEDIA PRODUCTION GRADUATE

Course index

A

| | | |
|---|------------|----|
| Accounting and Finance MSc | FT/PT | 14 |
| Acute Care of the Older Person with Frailty PGCert | PT (SJ) | 56 |
| Advanced Clinical Practice MSc, PGDip, PGCert | PT (SJ) | 56 |
| Advanced Computer Science MSc, PGDip, PGCert | FT/PT | 30 |
| Advanced Nursing Practice MSc, PGDip, PGCert | PT | 56 |
| Anthropology Graduate Diploma | FT/PT (SJ) | 67 |
| Applied Design in Architecture (ARB and RIBA Part 2) MArchD | FT | 15 |
| Applied Human Nutrition MSc, PGDip | FT/PT | 69 |
| Applied Sport and Exercise Nutrition MSc, PGDip | FT/PT | 69 |
| Architecture MArch, PGDip | FT | 15 |
| Artificial Intelligence MSc, PGDip, PGCert | FT/PT | 30 |
| Automotive Engineering with Electric Vehicles MSc | FT/PT | 40 |

B

| | | |
|---|----------------|----|
| Building Information Modelling and Management | MSc FT/PT (SJ) | 64 |
|---|----------------|----|

C

| | | |
|--|------------|----|
| Cardiorespiratory Practice PGCert | PT (SJ) | 57 |
| Coaching and Mentoring Practice MA, PGDip, PGCert | PT | 27 |
| Computer Science for Cyber Security MSc, PGDip, PGCert | FT/PT | 30 |
| Computing Science MSc, PGDip, PGCert | FT/PT | 31 |
| Conservation Ecology MSc, PGDip, PGCert | FT/PT | 20 |
| Construction Project Management MSc | FT/PT (SJ) | 64 |
| Creative Writing MA, PGDip, PGCert | FT/PT | 43 |

D

| | | |
|--|------------|----|
| Data Analytics MSc | FT/PT | 33 |
| Data Analytics for Government MSc | PT | 33 |
| Development and Emergency Practice MA, PGDip, PGCert | FT/PT | 16 |
| Digital Media Production MSc | FT/PT | 19 |
| Digital Marketing MSc | FT/PT (SJ) | 54 |

| | | |
|--------------------------------------|-------|----|
| Digital Publishing MA, PGDip, PGCert | FT/PT | 49 |
| District Nursing PGDip | FT/PT | 57 |
| Doctor of Coaching and Mentoring DCM | PT | 27 |
| Doctor of Education EdD | PT | 38 |

E

| | | |
|---|---------------|----|
| Education MA | FT/PT/DL | 36 |
| Education – Advanced Study in SEMH Difficulties PGCert | PT/DL | 35 |
| Education (Artist Teacher Practice) MA | PT/DL | 36 |
| Education – Artist Teacher Practice PGCert | PT/DL (A) | 34 |
| Education (Childhood and Youth Studies) MA | FT/PT/DL | 37 |
| Education – Children's Literature PGCert | PT/DL | 34 |
| Education – Early Childhood PGCert | PT/DL | 34 |
| Education – ELT Writing Materials PGCert | PT/DL | 34 |
| Education (Higher Education) MA | FT/PT/DL | 38 |
| Education (Leadership and Management) MA | FT/PT/DL | 37 |
| Education – Leadership and Management PGCert | PT | 34 |
| Education – National Award for SEN Co-ordination PGCert | PT/DL | 34 |
| Education (SEND) [Special Educational Needs and Disabilities] MA | FT/PT/DL | 37 |
| Education (TESOL) MA | FT/PT/DL | 38 |
| Education – Teaching Multilingual Learners PGCert | PT/DL | 35 |
| Education – Understanding and Managing SEMH Difficulties PGCert | PT/DL | 35 |
| Education – Working with Children with Literacy Difficulties PGCert | PT | 35 |
| English Literature MA, PGDip, PGCert | FT/PT | 43 |
| Emergency Nursing Practice PGCert | PT (SJ) | 57 |
| Entrepreneurship and Innovation MSc | FT/PT | 24 |
| Environmental Impact Assessment and Management MSc | FT/PT/DL (SJ) | 63 |

F

| | | |
|--|------------|----|
| Film Studies: Popular Cinema MA, PGDip, PGCert | FT/PT | 19 |
| Finance MSc | FT/PT (SJ) | 14 |
| Fine Art MFA, PGDip, PGCert | FT/PT | 18 |

Course index

G

| | | |
|--|---------------|----|
| Global Public Health Leadership MPH, PGDip, PGCert | FT/PT/DL (SJ) | 44 |
| Graduate Diploma in Law (GDL) Graduate Diploma | FT/PT | 50 |

H

| | | |
|--|------------|----|
| Health Sciences Open Award MSc, PGDip, PGCert | FT/PT (SJ) | 44 |
| History MA, PGDip, PGCert | FT/PT | 47 |
| Historic Conservation MSc, PGDip, PGCert | FT/PT | 60 |
| Human Resource Management MA, PGDip | PT | 28 |
| Human Resource Management Fast-Track MA | PT/DL | 28 |
| Human Resource Management MSc | FT/PT | 28 |
| Humanitarian Action and Peacebuilding MA, PGCert | PT/DL (SJ) | 16 |

I

| | | |
|--|------------|----|
| Infrastructure Planning and Sustainable Development MSc, PGDip, PGCert | FT/PT (SJ) | 63 |
| International Architectural Regeneration and Development MA, PGDip, PGCert | FT/PT | 16 |
| International Business Management MSc | FT/PT (SJ) | 24 |
| International Business Management and Corporate Social Responsibility MSc | FT/PT (J) | 24 |
| International Business Management and Digital Strategy MSc | FT/PT | 25 |
| International Business Management and Entrepreneurship MSc | FT/PT (SJ) | 25 |
| International Business Management and Finance MSc | FT/PT | 25 |
| International Business and Intercultural Communication MA, PGDip, PGCert | FT/PT | 26 |
| International Business and Marketing Management MSc | FT/PT (SJ) | 26 |
| International Business and Supply Chain Management MSc | FT/PT | 26 |
| International Events Management MSc | FT/PT | 52 |
| International Events Marketing MSc | FT/PT | 52 |
| International Hospitality, Events and Tourism Management MSc | FT/PT (SJ) | 53 |
| International Hotel and Tourism Management MSc | FT/PT (SJ) | 53 |

| | | |
|--|------------|----|
| International Luxury Marketing MSc | FT/PT (SJ) | 54 |
| International Management and International Relations MSc | FT/PT | 29 |
| International Relations MA, PGDip, PGCert | FT/PT/DL | 67 |
| International Security MA, PGDip, PGCert | FT/PT | 67 |
| International Tourism Management MSc | FT/PT | 53 |

J

| | | |
|------------------------------|-------|----|
| Journalism MA, PGDip, PGCert | FT/PT | 48 |
|------------------------------|-------|----|

L

| | | |
|---|-------|----|
| Graduate Diploma in Law (GDL) Graduate Diploma | FT/PT | 50 |
| Master of Laws Commercial Law and International Trade LLM PGDip | FT/PT | 50 |
| Master of Laws Human Rights Law LLM PGDip | FT/PT | 51 |
| Master of Laws International Law LLM PGDip | FT/PT | 51 |
| Master of Laws Legal Practice LLM | PT/DL | 51 |

M

| | | |
|---|------------|----|
| Management MSc | FT/PT | 29 |
| Management in Health and Social Care MSc, PGDip, PGCert | FT/PT (SJ) | 44 |
| Marketing MSc | FT/PT (SJ) | 55 |
| Marketing and Brand Management MSc | FT/PT (SJ) | 54 |
| Marketing Communications Management MSc | FT/PT (SJ) | 55 |
| Marketing and Entrepreneurship MSc | FT/PT | 55 |
| Mechanical Engineering MSc | FT/PT | 40 |
| Medical Genetics and Genomics MSc | FT/PT | 20 |
| Midwifery – Pre-Registration MSc | FT | 58 |
| Minor Injury and Illness Management PGCert | PT (SJ) | 58 |
| Motorsport Engineering MSc | FT/PT | 41 |
| Music MA, PGDip, PGCert | FT/PT | 19 |

N

| | | |
|--|--------|----|
| Nursing (Mental Health) – Pre-Registration MSc | FT | 58 |
| Nursing Studies (Leadership in Clinical Practice) MSc, PGDip, PGCert | PT (J) | 59 |

Course index

O

| | | |
|---|--------------------|----|
| Occupational Therapy (Pre-Registration) MSc | FT | 45 |
| The Oxford Brookes Global MBA | PT/DL/Blended (MS) | 29 |

P

| | | |
|---|------------|----|
| PGCE without QTS, PGCE | PT | 36 |
| PGCE Post-compulsory PGCE | FT/PT | 39 |
| PGCE Primary 3-7 PGCE (with QTS) PGCE | FT | 39 |
| PGCE Primary 5-11 PGCE (with QTS) | PGCE FT | 39 |
| Physiotherapy (Pre-registration) MSc | FT | 45 |
| Planning PGDip | FT/PT | 61 |
| Primate Conservation MSc, PGDip, PGCert | FT/PT | 21 |
| Primate Conservation – Apes in the Anthropocene MSc, PGDip, PGCert | FT/PT | 21 |
| Primate Conservation – Human-Primate Interface MSc, PGDip, PGCert | FT/PT | 23 |
| Primate Conservation – Lemurs and Nocturnal Primates MSc, PGDip, PGCert | FT/PT | 23 |
| Primatology and Conservation MRes, PGCert | FT | 23 |
| Project Management in the Built Environment MSc | FT/PT (SJ) | 64 |
| Psychology MSc, PGDip, PGCert | FT/PT | 66 |
| Public Health MPH, PGDip, PGCert | FT/PT (SJ) | 45 |
| Publishing Media MA, PGDip, PGCert | FT/PT | 49 |
| Publishing MA, PGDip, PGCert | PT/DL (J) | 49 |

Q

| | | |
|--|------------|----|
| Quantity Surveying and Commercial Management MSc | FT/PT (SJ) | 65 |
|--|------------|----|

R

| | | |
|---|------------|----|
| Racing Engine Systems MSc | FT/PT | 41 |
| Real Estate MSc | FT | 65 |
| Real Estate Investment Finance MSc, PGDip | PT/DL (SJ) | 65 |

S

| | | |
|---|-------|----|
| Shelter after Disaster PGCert | FT | 17 |
| Social Work MA, PGDip | FT/PT | 46 |
| Software Engineering MSc, PGDip, PGCert | FT/PT | 31 |
| Spatial Planning Studies Qualifying Certificate | PT | 61 |
| Spatial Planning MSc, PGDip | FT/PT | 61 |
| Specialist Community Public Health Nursing (Health Visiting and School Nursing) PGDip | FT/PT | 59 |
| Sustainable Architecture: Evaluation and Design MSc, PGDip, PGCert | FT/PT | 17 |

T

| | | |
|-----------------------------------|-------|----|
| Tourism and Events Management MSc | FT/PT | 52 |
|-----------------------------------|-------|----|

U

| | | |
|--------------------------------|-------|----|
| Urban Design MA, PGDip, PGCert | FT/PT | 63 |
|--------------------------------|-------|----|

Key to course index

| | | | |
|---------------|-----------------------------------|---------------|---------------------------------------|
| DCM | Doctor of Coaching and Mentoring | MPH | Master of Public Health |
| DL | Distance learning | MRes | Master of Research |
| EdD | Doctor of Education | PGCE | Postgraduate Certificate in Education |
| FT/PT | Full time/Part time | PGCert | Postgraduate Certificate |
| LLM | Master of Laws | PGDip | Postgraduate Diploma |
| MA | Master of Arts | J | January start |
| MArchD | Master of Architectural Design | SJ | September and January start dates |
| MSc | Master of Science | MS | March and September start dates |
| MBA | Master of Business Administration | A | August start date |
| MFA | Master of Fine Arts | | |

Unless otherwise stated courses start in September.

All courses are subject to change, but were correct at the time of going to print.

Course accreditations

ACCA

Association of Chartered Certified Accountants

AfN

Association for Nutrition

AMBA

Association of Masters of Business Administration (MBA)

AMBDA

Associate Membership of the British Dyslexia Association

ARB

Architects Registration Board

BCS

British Computer Society

BPS

British Psychological Society

BPTC

Bar Professional Training Course

CIEEM

Chartered Institute of Ecology and Environmental Management

CEng

Chartered or Incorporated Engineer

CELTA

Certificate in English Language Teaching to Adults

CIM

Chartered Institute of Marketing

CIMA

Chartered Institute of Management Accountants

CIPFA

Chartered Institute of Public Finance and Accountancy

CIOB

Chartered Institute of Building

CIPD

Chartered Institute of Personnel and Development

CITP/

Chartered IT Professional

CITPF

Chartered Management Institute

CMI

Chartered Society of Physiotherapy

CSP

DELTA

Diploma in Teaching English to Speakers of Other Languages

EPAS-

EFMD

(European Foundation for Management Development) Programme Accreditation System

GCHQ

Government Communications Headquarters

HPCP

Health and Care Professions Council

ICAS

The Institute of Chartered Accountants of Scotland

ICAEW

Institute of Chartered Accountants in England and Wales

IDM

Institute of Direct and Digital Marketing

IET

Institution of Engineering and Technology

IHBC

Institute of Historic Building Conservation

IMechE

Institution of Mechanical Engineers

LAM

Board of Architects Malaysia

LPC

Legal Practice Course

NMC

Nursing and Midwifery Council

QTLS

Qualified Teacher Learning and Skills

QTS

Qualified Teacher Status

RIBA

Royal Institute of British Architects

RICS

Royal Institution of Chartered Surveyors

RCOT

Royal College of Occupational Therapists

RTPI

Royal Town Planning Institute

SEMH

Social, Emotional and Mental Health

SEBDA

Social Emotional and Behavioural Difficulties Association

SEN

Special Educational Needs

SENr

Sport and Exercise Nutrition Register

UNITAR

United Nations Institute for Training and Research

WFOT

World Federation of Occupational Therapists

Oxford Brookes Degree Apprenticeships

Advanced Clinical Practitioner apprenticeship MSc

Architect degree apprenticeship MArchD

Digital and Technology Solutions Specialist Degree Apprenticeship

MBA Senior Leader Degree Apprenticeship Global MBA

i Find out more

www.brookes.ac.uk/apprenticeships

Visit us

Postgraduate Open Days

Whether virtual or on campus, our postgraduate events are the ideal opportunity to find out more about postgraduate study at Oxford Brookes University.

Browse our Open Days page to see events throughout the year:

www.brookes.ac.uk/open-days



Take a virtual tour

Browse our campuses and teaching spaces through 360-degree videos

www.brookes.ac.uk/virtual-tour



Chat to our current students

Download our app and get chatting to current students

www.brookes.ac.uk/chat-to-a-student

Access to Oxford Brookes

Bus

As a city with an excellent transport network, several bus routes connect our campuses, the surrounding area and city centre. Bus routes for Headington:

U1, U5 BROOKESbus, 400 (Park & Ride), 8, 9 (Oxford Bus Company), 700 and 900 (Stagecoach).

Coach

Travelling directly from the airport? The Airline coach services Heathrow Central Bus Station & Terminal 5, stand 10, as well as Gatwick, from South Terminal Lower forecourt stands 1&2 and North Terminal Lower Forecourt Rd stands 4&5.

Rail

There are direct train services to Oxford from many UK towns and cities, many at least hourly and sometimes half-hourly. For other places, there is usually a simple change

en route at Birmingham or Reading, or in London.

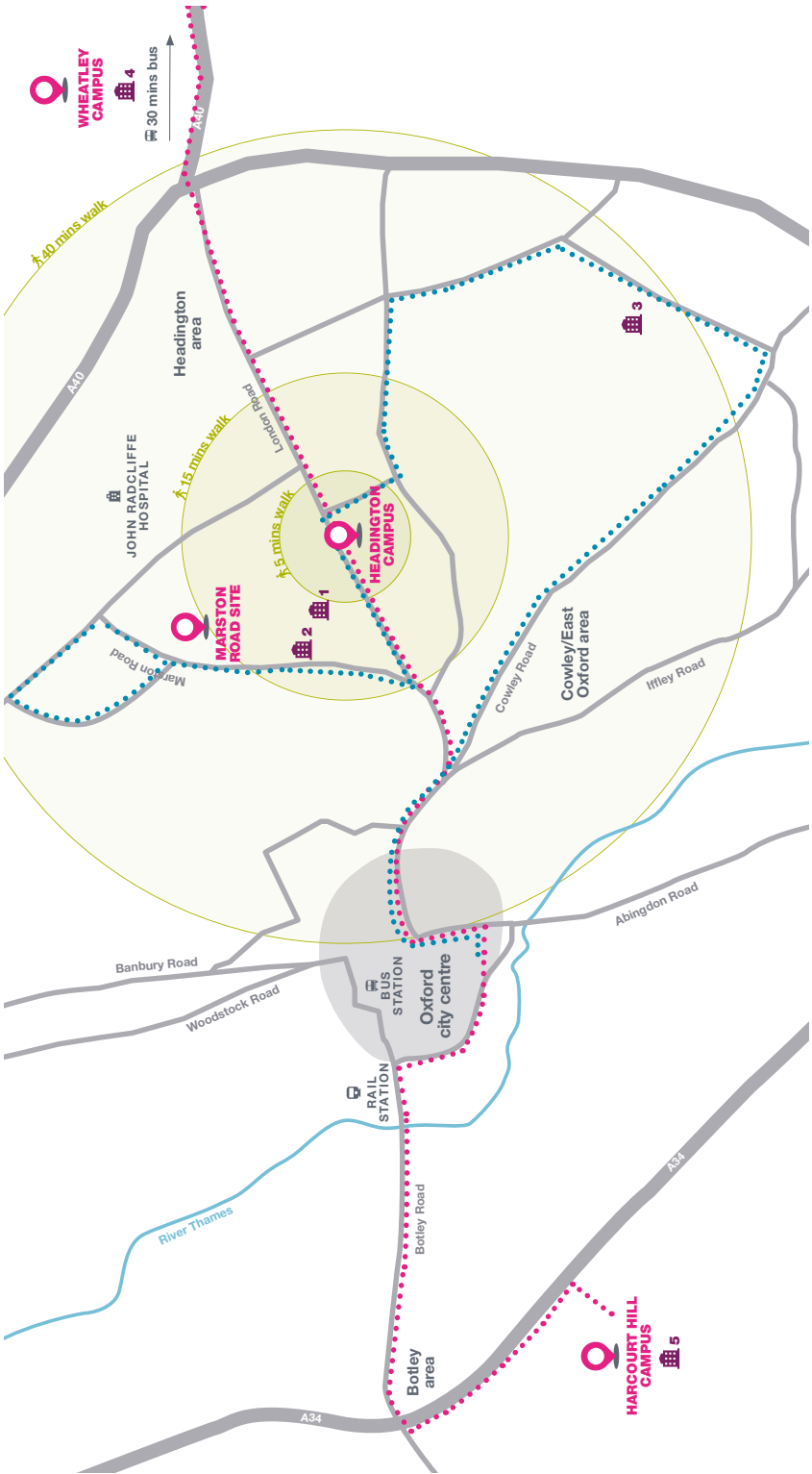
Car

Parking at Headington Campus is only available if you are a disabled blue badge holder. If you need to book a disabled parking space, please get in touch: query@brookes.ac.uk

Postcode: OX3 0BP

Nearest parking is available at Thornhill Park & Ride, you can catch the 400 to Headington Campus.

Postcode: OX3 9RX



Discover Oxford

All of our halls and campuses are connected by our BROOKESbus services

BUS ROUTES

- U1
- U5

HALLS OF RESIDENCE

- 1 Clive Booth Student Village
- 2 Clive Booth Postgraduate Centre
- 3 Crescent Hall
- 4 Lady Spencer Churchill Hall, Wheatley
- 5 Westminster Hall, Harcourt Hill

Visit our website: www.brookes.ac.uk/postgraduate

Contact us

Please get in touch if you have any enquiries

Phone: +44 (0) 1865 484848

Email: query@brookes.ac.uk



OXFORD
BROOKES
UNIVERSITY