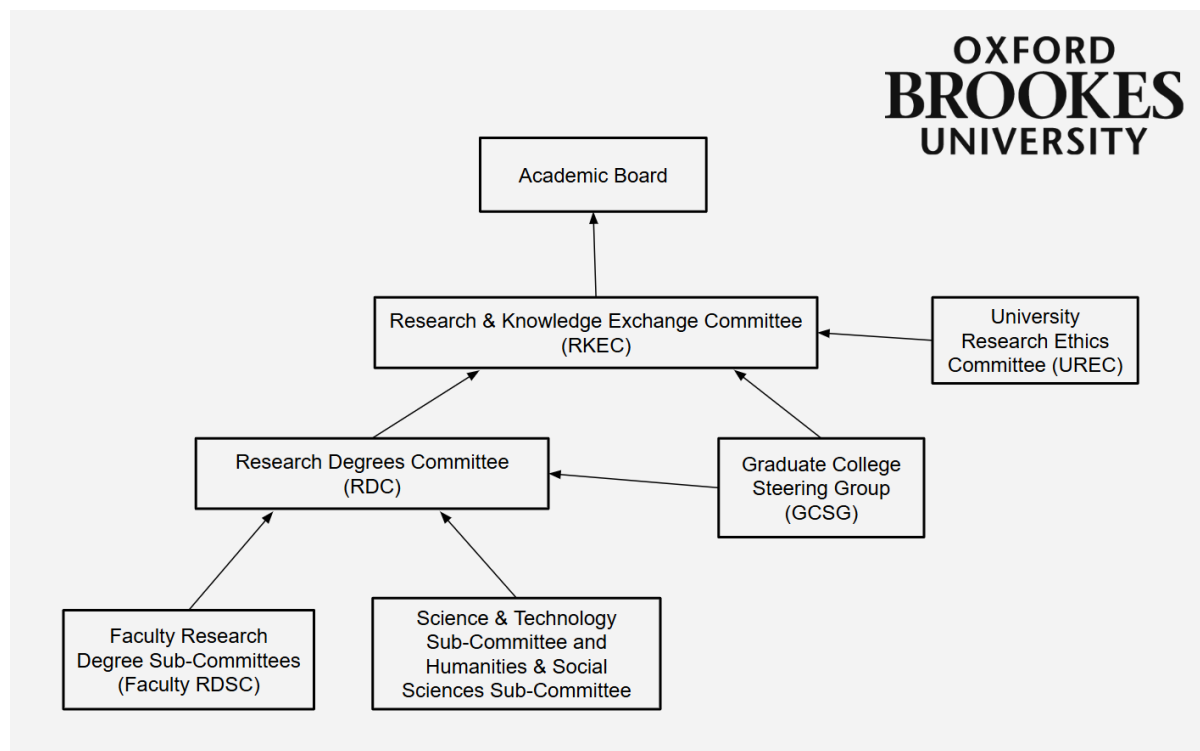


Committee Structure



Faculty Research Degree Sub-Committees (Faculty RDSC)

- Responsible for promoting, sustaining and monitoring University policy for Research Degrees and research students in the Faculty.
- Manage policy and provision for Research Degree students in the Faculty through the work of the Postgraduate Research Tutors (PGRTs) appointed in each School in the Faculty.
- Receive and review all matters pertaining to research students within the Faculty.
- **Feed into the Research Degrees Committee and Graduate College Steering Group.**

Research Degrees Committee (RDC)

- **Responsible to the Research and Knowledge Exchange Committee** for research students and the quality, standards and operation of the research programmes and degrees.;
- To develop strategies, policy, procedures and regulations regarding research programmes for recommendation to the Research and Knowledge Exchange Committee, including policies and practice relating to admission, recruitment, funding models, and the development of wider institutional policies and strategies;
- to advise on the resources necessary to support students and their programmes;

- to develop and monitor all research student training both at Faculty and University level;
- to develop and provide full supervisor training for all staff involved in supervising students on a research Programme;
- to ensure that the interests of students are protected and that the standard of awards is maintained under the University's regulations and policies for research degrees;
- to develop and approve new research degree programmes and collaborations, to ensure compliance with external and internal requirements and governance.

The Science and Technology Sub-Committee (S&T) and Humanities, Environment and Social Sciences Sub-Committee (HESS)

These Sub-Committees are operational, they are **responsible to the Research Degrees Committee** and they do not have student representation.

- Manage the approval of arrangements under which the candidate's research is carried out, including Registration and arrangements for academic supervision; Transfer, Change of Circumstance applications;
- Approve examination arrangements and the conduct of the examination;
- Dealing with the recommendations of examiners and awards.

Graduate College Steering Group (GCSG)

The Graduate College Steering Group (GCSG) is responsible to the **Research Degrees Committee and Research and Knowledge Exchange Committee**. GCSG is responsible for:

- promoting research degrees both internally and externally;
- giving a voice to research students via an active network of student representatives;
- providing opportunities for research student training and networking;
- building and maintaining a research student community;
- ensuring research student entitlements are met.

This aligns to the University Research Strategy. The Graduate Steering Group has delegated responsibilities for certain activities from the Committees which sit within the central structure but do not form part of the central University Academic Governance structure.

Research and Knowledge Exchange Committee (RKEC)

The Research and Knowledge Exchange Committee is **responsible to the Academic Board** for policy and processes for research and knowledge exchange, research students and the quality, standards and operation of research programmes and degrees.

- To develop strategic policy, for recommendation to the Academic Board, including policies and practice relating to recruitment and admission and training of research students and staff.

University Research Ethics Committee (UREC)

UREC is a sub-committee of the University Research and Knowledge Exchange Committee (RKEC).

- oversees University guidance, policies and procedures for research ethics approval;
- strategically reviews and updates University research ethics guidance, policies and procedures in the light of external best practice and of funders, professional, and statutory body requirements;
- is responsible for monitoring the two Research Ethics Sub-Committees Cross-Faculty Research Ethics Sub-Committee (CRES) and the Health and Social Care Cross-Faculty Research Ethics Sub-Committee (HSCRES).

Academic Board

Academic Board is responsible to the Board of Governors and the Vice Chancellor (as chief executive/principal) for general issues relating to the research, scholarship, teaching and courses at the institution, including criteria for the admission of students, the appointment and removal of internal and external examiners and the policies and procedures for assessment and examination of the academic performance of students.

It is also responsible for enhancing the quality of all aspects of the student experience, academic standards and the validation and review of courses. Academic Board advises the Vice Chancellor and the Board of Governors on the development of the academic activities of the University and the resources needed to support them.