

ISSUE E13

OXFORD  
**BROOKES**  
UNIVERSITY

# GRADUATE COLLEGE NEWSLETTER

The newsletter for the research student community



## Going Beyond the Mark PhD students at their best



# NEWS

## PhD Student Awarded an MBE !

Documentary filmmaker James Dunlop is currently working towards a PhD in participatory documentary at Oxford Brookes. James has worked as a director, producer, editor and script supervisor for The Bands of HM Royal Marines, developing a professional film unit to deliver live broadcasts and videos which attract audiences in the tens of millions across television and social media. His productions include the Mountbatten Festival of Music, Beating Retreat on Horse Guards Parade and commemorative films to mark events of national military significance. His work has been viewed by the Royal Family and his career highlights include directing two music videos with pop star Pixie Lott, and filming in a sinking ship simulator. He has been short-listed at the Sheffield Documentary Festival for his new [James Dunlop Discovers](#) digital series on YouTube.



James said: "It is a tremendous honour and I am deeply humbled to be selected to become a Member of the Order of the British Empire in King Charles III's first Birthday Honours list. I have many people to thank, but it is a testament to the incredible work, dedication, and support of the countless individuals who have been a part of this journey.

"We should never stop striving to work hard and make our mark on this world, and it is wonderful establishments such as Oxford Brookes University that allow people to achieve this. I have no doubt that working on my PhD with Oxford Brookes was a consideration to this MBE honour being awarded. I am truly touched by this acknowledgement and will cherish this with heartfelt gratitude."



## Building up your Future

PhD student Izzeddin Teeti from the Department of Engineering, Computing and Mathematics has been making the best of new opportunities. He formed part of the organising committee of ROAD++: The Second Workshop & Challenge on Event Detection For Situation Awareness in Autonomous Driving (ICCV23) which will be hosted in Paris on October 2023. Izzeddin was also a programme member at a workshop entitled "Scalable Autonomous Driving" which ran at the IEEE International Conference on Robotics and Automation held at ExCel London in 2023. He has also completed a science internship at the Robotics and AI department at Amazon in Berlin: "During my internship at Amazon, I joined a team

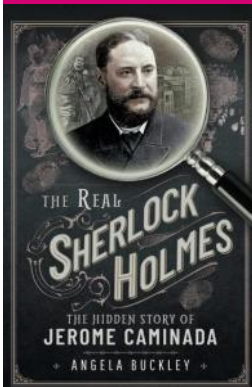
of applied scientists to confront a highly intricate challenge: detecting package damage within Amazon's fulfilment centres. Given Amazon's annual shipment volume of 8 billion packages, automating the inspection process to ensure package integrity became imperative. This task was particularly intricate due to the diverse array of objects -varied in shapes, colours, sizes, and each susceptible to distinct forms of damage. Additional insights into this matter are available in a Wall Street Journal article dedicated to the subject.

During my internship, I applied a recently developed model, aiming to benchmark its performance against the pre-existing solution employed by the team. This experience proved to be nothing short of exceptional. It enabled me to cultivate fresh skill sets while refining existing ones. The dynamic blend of research and hands-on implementation was an advantage for the position, in addition to having many social activities with both the team and fellow interns. What left an indelible mark on me was the profound sense of support, it was one of the most nurturing workspaces I have been a part of, fostering a healthy and conducive atmosphere for both personal and professional growth."



# NEWS

## The True Sherlock? Angela Buckley



PhD student in Social Sciences published her latest book about Jerome Caminada - The Real Sherlock Holmes. Caminada born to immigrant parents, in the slums of nineteenth century Manchester, overcame the odds to become one of the city's finest police detectives.

He was a master of disguise, with a keen eye for detail and ingenious methods of deduction, pursuing notorious criminals through the seedy streets of Manchester's underworld. Known as a 'terror to evil-doers', he stalked pickpockets and thieves, ruthless con artists and cold-blooded killers. See below some reviews on Angela's new book:

'This is a compelling read – a vibrant account of an extraordinary man, written with a verve that brings the nineteenth century back to life in all its grimy detail.' – Dr Nick Barratt, historian and author

'The story of Manchester's Sherlock Holmes is revealed in a gripping new book' – Manchester Evening News

'The book is thoroughly interesting – a leisurely, yet well-informed read' – The Manchester Historian

'A highly enjoyable book that deserves a place on the shelves of every student of Victorian criminal history' – The Whitechapel Society

'A treat for inquisitive readers' – The Crime Reader's Association

## The Beautiful Game Bonita Lunn,

current MPhil/PhD student, has had a chapter published in the book 'Critical Issues in Football', marking her first academic publication. The chapter uses a figurational sociological approach as a theoretical framework to explore the relationship between sport and religion, with a specific focus on the Tottenham Hotspur Football Club and the club's connection to the Jewish Religion.



Tottenham Hotspur FC, also known as Spurs, has long been thought of as a 'Jewish Club'. A number of factors have contributed to this imagined identity; the most probable ones include the fan base's demographics, the religious affiliations of current and former shareholders, and the nickname that the fans use to connect with the team, 'Yid', which is a Jewish ethnonym. As a result of this, it is evident that the club have been targeted for antisemitic hate by opposing fans. In her earlier research, Bonita looked at supporters' viewpoints on the use of the nickname 'yid', and she is presently working on creating a teaching tool for schools that will utilise sports to teach children about antisemitism.

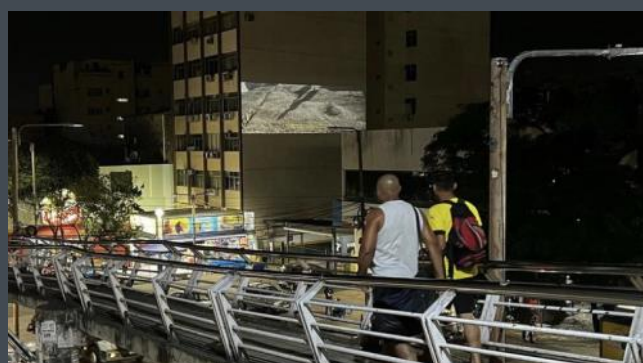
## Careers Training Programme

The Careers training programme for researchers is now live for bookings on

[www.brookes.ac.uk/Students/Careers/](http://www.brookes.ac.uk/Students/Careers/)

## Community Cinemas PhD student in Fine Art Sylvia Morgado de Queiroz chaired and

facilitated this event within the Creative Industries Festival on 15 May 2023. The theme was about community cinemas in unexpected spaces, from indigenous villages to building facades and screening in the peripheries, reaching out to new audiences that otherwise will be excluded. An international conversation was led by Yuli Rodríguez (Festival de Cine de Barrio), Emiliano Escoto (Festival de Cine de Barrio), Takumã Kuikuro (documentarist and festival organiser), João Pacca (Festival VideoRio), Trish Cashen (Poppadom Pictures) and Geron Swann (Film Oxford).



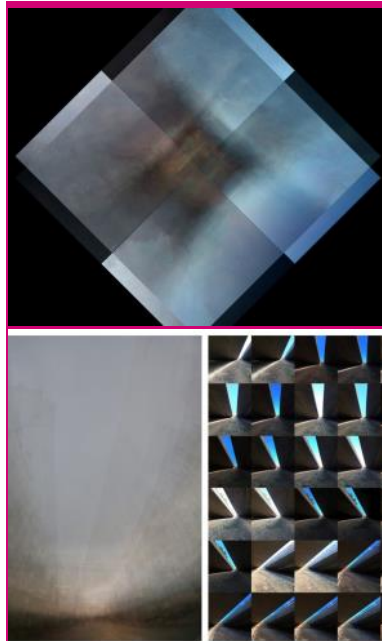
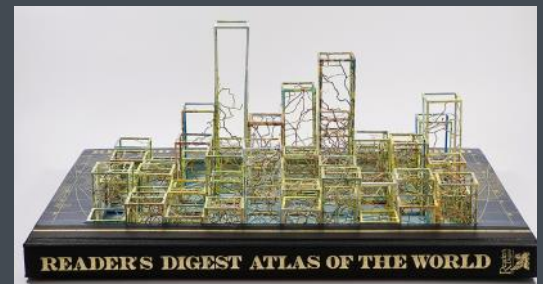
# NEWS

**Amazingly Small Constructions** Kate Hipkiss, artist and PhD Student in Fine Arts, presented her research at two conferences in September.

Kate's research explores her practice of papercutting using second hand maps and books to create sculptures that address our understanding of paper as a two-dimensional medium for communicating information and how this can be assimilated, augmented and communicated through the artistic practice of Papercutting. At 'Paper Alive!', the IAPMA (International Association of Paper Makers and Artists) Annual Congress in Dresden, she will discuss this aspect of her work along with how Material Thinking and Donald Schon's concept of 'back-talk' (listening and responding to the materials we use) impacts how she works.



During the 'Paper and Poetry: Invention Through Craft' Symposium, organised by Cambridge University and The Paper Foundation in Burnside, she discussed the role of text within her work. Composing poetry by removing sections of text from a document highlights the materiality of the paper and emphasises the existence of the original text while presenting an altered version that both reveals and obscures information and creates a connection through paper.



**Light Space Place** James Elliott and Catherine Ross, PhD by Fine Art Practice researchers at Oxford Brookes University exhibited their work at the Cornerstone Arts Centre in Didcot offering an innovative, visual exploration of the landscapes around them through a contemporary lens of unconventional procedural and digital art processes.

The focus of Catherine's research is a visual investigation into liminality. Liminality derives from the Latin word, 'limin' meaning 'threshold,' key traits of liminality include ambiguity, marginality, and transformation. Catherine is using concepts, materials, methods, subjects, and outcomes to evoke a liminal state. Her work focuses on liminal light (the in-between times of dawn, noon and dusk) and liminal space (the transitory zones of bridges, car parks, flyovers, passageways, piers, sea defence systems, tunnels and underpasses). Her process incorporates digital photography with printmaking, social media, and sound. Resulting in photographic grids, photopolymer etchings, and sound walks/works

that explore the liminal space between realism and abstraction. To interact with the sound walks/works gallery visitors will need to bring a mobile phone plus their headphones. The working title for James' artistic research is 'Temporal Place(s): Digital Representations of the Landscape' and is based around an investigation of whether the representation of temporality might lead to a portrayal of the landscape which reflects our contemporary relationship with the land we inhabit and move through. An underlying idea behind the multi-layered still and moving pieces was an attempt to visually 'encapsulate' an entire journey in a single image, and even possibly to communicate multiple journeys simultaneously. This body of work is (in part) also concerned with how art (and especially contemporary photography) depicts the contemporary 'landscape' (*from the Cornerstone arts centre in Didcot*).

# NEWS

## Architecture Book Fair



In collaboration with architects, Sabrina Morreale and Lorenzo Perri of Lemonot, Nicholas Grosso PhD student from Architecture was selected as curator for this year's Architecture Book Fair, a transnational virtual book fair dedicated to publishing and divulgation of

architecture and its intersection with politics, technology, economy and social issues.

The book fair is a project of dpr\_barcelona, an independent research studio and publishing house, and promoted by LINA, a pan-European platform of architecture institutions.

This year's theme was "Other Than Itself," and in their curatorial statement, the curators explored architecture as a filtering framework to animate the realities - or the fictions - that pervade the field. Striving to develop an approach to architecture that deals less with prestige and more with service to the communities who ultimately live with and utilize these structures, the statement cites a wide range of sources, including the Shinto religion, an exhibition by Ai Weiwei, and others, to build their alternative vision.

Read the full statement and browse the featured books at the [architecture book fair website](#)

## Prestigious Doctoral Fellowship

Terry-Lee Marttinen, PhD candidate in the Centre for Medical Humanities (CMH) and a member of the Centre for Multidisciplinary Studies on Racism at Uppsala University, is in her first year of inter-university-community collaborative medical history studies at Brookes. Her PhD research is part of the "[Sijddaj máhttsat](#)" project led by Associate Professor May-Britt Öhman at Uppsala University. Professor Marius Turda, Director of CMH is an acting supervisor, together with Öhman and lecturer Alys Beverton at OBU. She grew up in the 19th-century Sámi mission religion Firstborn Laestadianism, which originated in northern Sweden transported to North America by Nordic immigrants. Her dissertation explores transhistorical and transnational colonial eugenics manifesting gender violence, argued to be compounded in interaction with Canadian medical and social systems. Terry-Lee, an interdisciplinary researcher, uses Sámi feminist storytelling and intersectional methodologies to visualize Laestadian (cis) women and queer lived experiences. She shares personal experiences of transcolonialism centring Sámi and Laestadian oral traditions.



Terry-Lee authored two articles on the history of Swedish eugenics as an outgrowth of Master's medical history studies at OBU. Her PhD research is partly funded by a Vetenskapsradet (Swedish Research Council) studentship. She received a prestigious Doctoral Fellowship from the Canadian Social Sciences and Humanities Research Council (SSHRC) in May 2023 to further support her studies.

## Preparing for Eurovision 2023

PhD student Kirsten Etheridge and Dr Jan Butler of the Popular Music Research Unit (PMRU) held an event at Brookes in honour of the UK hosting Eurovision on behalf of Ukraine on 27 April. The postgraduate led event was well attended and featured stimulating discussion inspired by research students from across the UK giving position papers exploring different aspects of Eurovision.

We welcomed back Dr Dai Griffiths for a keynote paper discussing the development of key modulations in Eurovision songs and finished with a vote for the favourite Eurovision entry of the assembled attendees. Iceland's 2020 entry, 'Think About Things' won by a whisker!





# NEWS

## A Different Approach to Building a Database

A recently published paper co-authored by Sophie Manson current PhD student at the Faculty of Social Sciences and four Brookes' alumni ([see publication](#)) received positive reviews including a lengthy article in *Nature* commenting "A database to record the deaths of primates killed by cars and motorbikes might seem macabre, but for its developers it is a valuable open-access resource to inform further re-



Photo from Prall et al. 2023

search into road ecology and to improve conservation planning, road design and lobbying needed to adequately protect such species" The authors recorded species, location, year and month of incidents, collating over 2800 incidents involving at least 107 primate species from 41 countries.

Data was collected from relevant social media groups such as Facebook, Twitter etc from Fragmentation-related Road/Railway & Electrocution Wildlife Casualties (Asia), the IUCN/SSC Primate Specialist Group, Section for

Human-Primate Interactions, Primate Society of Great Britain and from the Langur Project Penang. Given the value of these data for addressing both local and global research questions, the authors encourage conservationists and citizen scientists to contribute to the GPRD to better understand the impact road infrastructure has on primates. This database already represents the most comprehensive data repository for global information on primate roadkill.

## Buddying Scheme celebrates its first birthday!

"Having a buddy has made me feel supported and connected"

"I'm grateful to have the opportunity to share my experience and learnings with first-year PhDs. It's been an engaging way to reflect on my own experience while supporting others!"

Students and PGRTs from the Schools of Built Environment and Architecture are proud of the success of their buddying scheme, which matches new starters with volunteer buddies drawn from existing students. Buddies then make contact before the semester starts - meaning people join with a ready-made first point of contact and a friendly face on their side.

The buddy acts as a guide during those first confusing days and weeks – willing and able to answer questions such as 'who was that?', 'how do I...', 'where is the best coffee on campus?' and 'what does this all mean?'

As people become more established, the buddy can offer informal support and guidance around processes such as Registration. The scheme has already created an amazing community, able to support each other and to share knowledge, ideas and resources and we look forward to continuing the buddying story!

"Sometimes, I just didn't know where to look for answers to what may seem trivial questions, and my buddy was always available and easy to contact. But what has been even more important to me is the moral support - when I felt a bit lost she would make me feel a whole lot better by sharing her own experience and insights."



# PAST EVENTS

**Three Minute Thesis Competition 2023** Another great networking event at Headington Hill Hall celebrating all of our competitors. We had eleven presentations of great quality



and diversity that the judges had a very difficult time selecting the winner and runner up. The people's choice award was chosen by the students themselves. There were presentations on Dragons and Posthumanism, Participatory Documentaries, British Film Heroes during WW2, Assassin bugs, Social value and community projects, and many others.

We are very grateful to our judges for giving of their time at a particularly busy academic period. Many thanks to Professor Susan Brooks, Dr Susannah Wright and Professor Nicole Pohl.

The winner of this year's competition was Sophie Harris from Health and Life Sciences with a presentation entitled "The influence of anxiety, confidence and self-concept on the perceptions and actions of adults with and without Developmental Coordination Disorder (DCD)". Unfortunately, Sophie could not attend the prize giving ceremony. Sophie's presentation was submitted to the UK Vitae

Three Minute Thesis Competition with finals in September, good luck Sophie!

The runner up prize was awarded to Lucia Sagredo-Sanchez for her presentation entitled "What's the value that a lecturer brings to their lessons? "

Ali Alsaied won the People's choice award for his presentation on "How social value influences participation in Community Energy Projects". All our winners received cash prizes.

We look forward to next year's competition where we hope to have an even larger variety of presentations.

Keep an eye on the [graduate college events](#) page for next year.



**Exclusive Tour** On Tuesday 18 July a group of research students and a few members of staff enjoyed another great tour of the Mini Plant in Oxford. John our tour guide who worked in the plant some years ago, was extremely knowledgeable — although the car manufacturing had changed to using i-technology almost completely for the production of the 'body in white' or the Mini's outer frame - he guided us so well!

*'The MINI factory tour was such an experience. Far from my antiquated mental image of a car factory, which I expected to be full of grease and dirtiness all around, I was amazed by the cleanliness, automation of the factory, and the level of customization of the vehicles'.*

*'The Oxford Mini Plant Tour was an all-around joy to visit with everyone! I was in awe of most things – from how close it was to the university, to the number of robots at work, and to the fancy cars above my research student pay-grade! The tour guide was also great! I definitely plan to visit again with my family!'*

We hope next time to be able to see how the mini's are painted - keep an eye to book the next visit at the graduate college [social and networking events](#).



# Student's publications

**Fitzpatrick, LLJ**, Ligabue-Braun, R and Nekaris, KA 2023. Slowly making sense: A review of the two-step venom system within Slow (Nycticebus spp.) and Pygmy Lorises (Xanthonycticebus spp.) Toxins 15(9), 514.

Prall LC, Eppley TM, Shanee S, ....**Manson S**, .... Svensson MS 2023. Road infrastructure and primate conservation: Introducing the Global Primate Roadkill Database. Animals 13(10), 1692.

**Hankinson E**, Korstjens AH, Hill RA, Wich SA, Slater HD, Abdullah A, Supradi S, Marsh CD, Nijman V 2023. Effects of anthropogenic disturbance on group densities of Thomas' langurs (Presbytis thomasi) within a lowland tropical forest, north Sumatra. Ecological Research 38(2), 293-305.

**Hankinson E**, Nijman V, Korstjens AH, Nowak MG, Hill RA 2023. Sympatric gibbons in historically logged forest in North Sumatra, Indonesia. Gibbon Conservation in the Anthropocene 13, 206.

Shepherd CR, **Gomez L**, Siriwat P, Nijman V 2023. Wildlife conservation in Myanmar: trade in wild sheep and goats for meat, medicine, and trophies, with links to China, India, and Thailand. European Journal of Wildlife Research 68(6), 76.

**Fourage A**, Shepherd CR, Campera M, Nekaris KAI, Nijman V 2023. It's a sign: Animal welfare and zoo type are predictors of animal identification signage usage and quality at zoo exhibits. Zoo Biology 42(2), 283-295

**Lunn B** 2023. Tottenham Hotspur, Fan Identity and Figurational Sociology: 'Yid Army' in Roberts W, Whigham S, Culvin A, Parnell D (ed.), Critical Issues in Football: A Sociological Analysis of the Beautiful Game, London: Routledge, pp.15-23.

**Duman M**, Bekaert S, Cocks A and Appleton J.V. 2023. Mapping local policy approaches to child neglect assessment practice and use of tools in England. Child Abuse Review, 1-13.

**Crosse E** and Myers A 2023. A considered approach to continuing professional development. Coaching at Work, Research matters.

**Teeti I**, Rongali SB, Singh V, Bradley A, Banerjee, B and Cuzzolin F 2023. Temporal DINO: A Self-supervised Video Strategy to Enhance Action Prediction. to appear at Proceedings of the IEEE/CVF International Conference on Computer Vision (ICCVw 2023)

**Teeti I**, Khan S, Shahbaz A, Bradley, A and Cuzzolin F 2022. Vision-based Intention and Trajectory Prediction in Autonomous Vehicles: A Survey. Proceedings of the Thirty-First International Joint Conference on Artificial Intelligence (IJCAI22).

Let us know about your publications at [asa-gcnewsletter@brookes.ac.uk](mailto:asa-gcnewsletter@brookes.ac.uk)

## The Graduate College

The Graduate College organise and support a variety of events for research students, including training and social get-togethers.

Please visit: [The graduate college events page](#)

## Research Degrees Team

You can contact us on:

[rdt-researchdegrees@brookes.ac.uk](mailto:rdt-researchdegrees@brookes.ac.uk)



# RESEARCH STUDENT PROFILES

---



**Deborah McGuire**

School of History

Philosophy and Culture

**Thesis Title:** Emotional Journeys. The British Quilt in Space and Time, 1770-1920.

My research uses the domestic quilt as a research tool to explore the emotional lives of makers and owners between 1770-1920. Quilts are amongst the most sentimental of family heirlooms, they are objects of long and creative labour for their makers and thus, their subsequent owners carry quilts with them across spaces and through generational time.

It is in these journeys, where quilts pass between generations or move between places where we can see emotions in practice. When quilts are carried, bequeathed, stolen or reworked we see how emotions drive actions to preserve quilts. By exploring the materiality of quilts, their creative designs, the skills inherent in their making and in their mending or reworking we learn about emotional labour. When quilts appear

in historical testimony we gain insight into their elevation, often as symbols of an emotion; hard work, morality, maternal care – or the lack of.

Following quilt making out into the British provinces we gain insight into the emotional lives of ordinary labouring women in places more commonly characterised by scholarly exploration of the significance of male labour such as mining and farming. By mapping how quilts and practice of quilting travelled from Britain with colonialism we gain insight into the societal British values that were exported around the world. By exploring how makers used the materiality of quilts to make tangible some aspects of their spiritual inner emotional life, we gain insight to how religious and moral teachings were experienced and explored through textile practice in the domestic and institutional space.

My PhD will rewrite the history of British quilt making through the lens of emotion, exploring what quilt making meant to the people who engaged in it. It will ask what quilts as objects meant to those who owned and kept quilts across generations as they travelled through spaces and across generational time.

I will use my research to inform the development of The Quilt Collection. One output is a tool which can be used in accessions practice for emotional objects in museum settings. I will also be using my work to encourage more scholarly use of the unique collection of quilts and social history of The Quilt Collection (and holdings in other smaller museums) as a research source for disciplines including art, history, women's studies, the study of material culture and for those seeking artistic creative inspiration. Through my work I seek to elevate a heritage craft that has been often overlooked by those researching social and artistic British history. The craft is perhaps more associated with US traditions, which obscure the different traditions found in the UK. I write a column for a popular quilting magazine and give talks and presentations to quilt makers today, and my research is important in helping (extra)ordinary makers today contextualise their labour as a significant contributor to the material culture of their families, communities and thus wider society.

**When quilts appear in historical testimony we gain insight into their elevation, often as symbols of an emotion; hard work, morality, maternal care – or the lack of.**

# RESEARCH STUDENT PROFILES



**Scott Newson**

School of Education Humanities and  
Social Sciences

**Thesis Title:** How neuroscientific insights on curiosity, creativity, and problem-solving can help guide and enrich existing approaches to enquiry-based learning.'

Enquiry-based learning is becoming more prevalent in educational institutions, particularly in the sciences and humanities, and was first pioneered as a working concept in the 1950s in the American education system.

However, given the great strides in cognitive neuroscience that have been made since the advent of fMRI in the early 1990s, I feel that existing models of enquiry-based learning (such as those of John Dewey and Joseph Schwab) do not fully capitalise on the breadth of

understanding that we now have about how the brain generates ideas, solves problems, and makes decisions - all cognitive processes that underpin how the brain enquires best.

Therefore, I believe that current philosophical approaches towards enquiry-based learning can be revised and updated by applying an empirical understanding of neuroscience, together with effective application of cognitive and psychological concepts - for example delivered through professional development programmes. This would greatly enrich the successful delivery and effectiveness of enquiry-based learning in the classroom, especially in the context of working through and generating actions and solutions in response to complex global issues.

I enjoy the blend of independent research and coming together every so often with my fellow researchers. We are lucky in that we have a wealth of online resources at hand, as well as the physical university campus. I also enjoy the relationships we have been able to build with academic staff who always value what we have to say and offer in tutorials.

Perhaps the biggest challenge is a logistical one: as a teacher and parent studying for a professional doctorate it's all about finding the time to read papers and get stuck into the research areas that I am interested in. To try and get around this (as best I can!) I prioritise what I wish to read up on in relation to the assignments I have and work back from that.

I hope to be able to apply the research and knowledge I have gained through completing my doctorate in my teaching, and to ultimately oversee teacher training programmes based around enquiry and cognitive science in school.

There are plenty of opportunities for further training courses here at Brookes – we are always being invited to various enrichment and development sessions which is great. Hopefully, as time goes by, I will be able to start taking more advantage of these!



# RESEARCH STUDENT PROFILES



**Rose Scofield**

Department of Education

**Thesis title:** Recruitment and retention of Degree level Equine Science students in relation to possession of equine cultural capital and sense-of-belonging over time.

I am investigating the thorny issues of recruitment and retention in Equine Science degrees using an interpretivist approach. I will frame my research around the concept of cultural capital, from Pierre Bourdieu, investigating its use in the equine world and potentially discovering what is 'equine' cultural capital, and whether this influences recruitment and retention in Equine science degrees.

I am also exploring if there are any links between a sense of belonging to the student body and the possession of equine cultural capital. There is a dearth of applicants from working class backgrounds in equine science, alongside a large demand in the equine industry for skilled persons, and I am keen to discover how recruitment and retention issues in Higher Education courses may play a part.

I am approaching this via semi-structured interviews with graduates as a narrative enquiry to enable them to tell their stories and share their lived experiences. If this gives me an insight into the possession of equine cultural capital and if it does affect sense of belonging, I may be able to propose interventions enabling those applicants who feel they do not have equine cultural capital to apply – therefore increasing numbers. In terms of retention issues, if students are supported into gaining equine cultural capital through their degree through a 'tool kit,' this may help them remain on the course.

Working together with my Ed D (Educational doctorate) cohort and supporting each other – that has been a real journey. My main challenge is, as this is a Professional degree, fitting it around my job. The only strategy I can employ is making sure I keep organised and give myself enough time to get work completed. Gantt charts are good for this!

**Disabled role models are really important, as many young people have no expectation of how well they can actually do in life, without access to someone who can share their particular experiences.**

We are always looking for contributions for future editions of the newsletter and they are welcome from all sections of the University.

If you would like to get involved please email: [asa-gcnewsletter@brookes.ac.uk](mailto:asa-gcnewsletter@brookes.ac.uk)



Follow us on Twitter for all the latest research student news and events

# RESEARCH STUDENT PROFILES



**Hilary Brown**

Health and Life Sciences

**Thesis Title:** Optimising the care and support of people with inoperable pancreatic cancer and their family carers.

Enhancing the quality of life for people with inoperable pancreatic cancer and their family carers, through high quality supportive care, is of prime importance, yet evidence shows that there are gaps in care and sub-optimal support in some cases.

Pancreatic cancer is the tenth most common cancer in the UK with approximately 9,000 people diagnosed each year but survival rates are low, only 1 in 4 (25.4%) people diagnosed with pancreatic cancer in England survive their disease for one year or more. Surgery is the only curative treatment for pancreatic cancer, but at present, less than 1 in 10 (10%) of patients are deemed eligible for surgery at diagnosis.

If the cancer is inoperable, treatment then consists of 'best supportive care' or 'palliative care' to manage symptoms and maintain optimal quality of life. Such care might address physical symptoms such as pain, digestive discomfort, and fatigue, or psychological symptoms such as depression or anxiety.

This study takes a qualitative approach with a longitudinal element, to explore the experiences of people affected by cancer alongside the healthcare professionals who provide care and support to this cohort of patients and their family carers. Semi-structured interviews will take place with patients, family carers and healthcare professionals across a number of NHS and non-NHS sites. Data from the interviews will be analysed using the Framework Approach or Method.

The findings will be shared and discussed with NHS sites and through national networks of people affected by cancer, and healthcare professionals, in order to consider feasible recommendations for service improvements and policy changes.

I enjoy the opportunity being a research student offers of exploring ideas, concepts and literature that I wouldn't have the time to do in a work environment. I also enjoy the autonomy it brings, though the flipside of this is that it is sometimes quite a lonely endeavour. I was very used to working in small teams in all my previous careers so this feels quite different. I try to make sure that I keep in regular touch with friends and ex-work colleagues to stay connected and engaged with everything else that's happening in the world, as it's very easy to become quite insular.

Some of the doctoral training sessions have been really interesting and enjoyable – some of the topics were familiar to me but it was nice to have a refresh and a different perspective and it's always nice to come into contact with people studying such a broad range of subjects at this level.

You can't rely on the research training to answer all your questions though, or solve all your problems, so you have to be prepared to take the initiative and do plenty of your own study whether that's reading the literature around your subject, or exploring particular theories in depth or learning about new methodologies.

I would like to hope that I can continue to work within the field of pancreatic cancer in some capacity but my plans are quite unformed at the moment.

**You have to be prepared to take the initiative and do plenty of your own study whether that's reading the literature around your subject, or exploring particular theories in depth.**



# RESEARCH STUDENT PROFILES



**Sophie Harris**

Department of Psychology

**Thesis Title:** How do I get past this? The influence of anxiety, self-efficacy and movement variability on the perceptual judgements and executed actions of adults with and without Developmental Coordination Disorder (DCD).

My research is investigating the role of anxiety, self-efficacy and movement variability (one's ability to move consistently) in how adults with and without Developmental Coordination Disorder (DCD) think they will behave (their perceptual judgement) and how they actually behave (their executed action). I am investigating this using questionnaires and lab-based work using motion capture software within the Perception and Motion Analysis Laboratory at Oxford Brookes, using a task based around navigating obstacles in the everyday environment.

DCD (sometimes known as Dyspraxia) is a condition affecting around 5% of the population where motor coordination does not align with the expected level for an individual's age. It manifests in fine (e.g. writing by hand or doing up buttons) and gross motor difficulties (e.g., walking down a narrow street without bumping into obstacles) in both childhood and adulthood, which can impact negatively on everyday life (Kirby, Edwards, Sugden & Rosenblum, 2010).

My PhD is building on findings from my MSc research showing that emotional state, and specifically anxiety, influences what typically developing (TD) individuals think they will do (perceptual judgement of potential action), but not what they actually do (the physically executed action) (Harris & Wilmut, 2020). This suggests that different factors, including anxiety, constrain perception of potential action compared to perception during the execution of action.

I am first using an online questionnaire to investigate how different psychological factors are related to people's movement ability. This considers elements of self-efficacy (how well you perceive you can do something), self-concept (ways in which you see yourself), resilience and anxiety among adults with and without DCD. To date very little is known about self-efficacy, self-concept, resilience and anxiety within the DCD population, and how these differ to their typically developing counterparts. This phase will therefore aim to provide valuable insights into the lived experience of adults with DCD, a group among which an urgent need for further research has been identified (Blank et al., 2019). Findings from this will also help create an appropriate task-specific self-efficacy and anxiety scale for subsequent use. This is necessary because a self-efficacy scale focusing specifically on navigating the environment does not yet exist.

This research aims to contribute new, in-depth understanding of the roles of anxiety, self-efficacy and movement variability in the relationship between how adults with DCD perceive their intentions and abilities to act in the world, and how they realise those actions in comparison with adults without DCD. This will be useful in informing interventions, particularly regarding perceived self-efficacy in confidently and safely navigating one's environment, which aim to improve the quality of functional and emotional life for individuals with DCD.

**Treating my PhD as much as possible like a 'nine to five' job - with some exceptions when necessary of course - helps me stay on the right track in terms of productivity, efficiency and establishing a healthy work-life balance.**

# RESEARCH STUDENT PROFILES



**Izzeddin Teeti**

Engineering, Computing and  
Mathematics Department

**Thesis title:** Homo Prospectus: Towards Predictive Algorithms for Advanced Autonomous Vehicle Perception.

My work is on the intersection of vehicles and Artificial Intelligence, in particular, it studies the problem of predicting other agents' intention and trajectory in the driving scene.

Prediction in Autonomous cars is the ability of the ego vehicle to forecast the intention and trajectory of other road users.

Accurate prediction of the intention or trajectory of other road users will enable the planning pipeline of the ego vehicle to eliminate paths of potential accidents and to generate safe and reliable paths to follow.

However, prediction in the autonomous driving domain is a complex problem due to the partial observability of the environment, the

uncertainty of future intention or trajectory, and being a multi-agent environment, roads contain agents of various goals and dynamic features.

Currently, most prediction models are solving the problem from a bird's eye view, assuming they have access to HD maps containing information about all agents in the area. In reality, this is not the case, as modern systems might have access to maps but not to agents' locations.

Also, some areas do not have maps or have outdated ones. Few researchers explored solving the prediction problem from the ego-vehicle point of view, which is more realistic, closer to the actual on-ground scenario, and the problem the human driver is trying to solve.

However, those researchers treated the problem as a single-agent problem and a single-agent prediction. Therefore, there is a research gap in solving the multi-agent prediction in self-driving cars from an ego-vision perspective.

I enjoy intellectual growth, autonomy, and the opportunity to contribute to science. Regarding the challenges, my passion prevents me from saying "No" to a new research collaboration, so I sometimes find myself having a lot on my plate. Also, while researching, sometimes our research ideas or experiments fail, which might be hard to accept.

To overcome these, I use a tool (called Notion) to manage my time and organise everything I am involved with, I also seek support from my mentors, and I learned to embrace failure as a learning opportunity.

I plan to apply for post-docs related to my field, I would be happy if I applied for a post-doc that searches how to apply machine theory of mind to autonomous vehicles related problems like Intention Prediction.

As a research student, the most important factor or attraction point is the supervisor or the PI. Fabio is one of the famous names in the domain that I am interested in, his lab produces significant and impactful papers.



# COMING UP

**Calling all new students** Join us on the next mystery walking trail around Oxford City centre and Castle on Tuesday 10 October from 3-5pm. Come, find and decipher clues to solve a mystery. You will get to know some rare and lovely hidden streets in the city centre while chatting with peers from other faculties.

Visit the [graduate college events page](#) and book your place in one or all of our next events



**Write here, write now** The Migration and Refugees Network will be re-launching its writing group 'Write here, write now' from September 2023 onwards, every week on alternate days Wednesdays and Friday afternoons. We will run the group as a hybrid event and hope to hold sessions in Headington Hill Hall as well as online for those who can't join in person. The group is open to all - and will be an ideal opportunity for PhD students to develop their writing practice alongside academics at varying stages of their career.



Photo by [Alin Andersen](#) on [Unsplash](#)

**Christmas Party 2023** Our fantastic student representatives are busy planning and looking at the possibility of holding a Research Student Christmas Party early in December.

If you would like to know more or to help with the planning, please go to the [graduate college events page](#).

The **Equality, Diversity and Inclusion Network** will be running several exciting events during 2023/2024 and we would love to see graduate students join in. These include:

- **A Paper Writing Series:** For those looking to start or finish a piece for publication, this series of supportive seminars and writing sessions will help see you through the process. The series will run from March - July 2024 and an Expression of Interest form will be circulated in late 2023.
- **Our 2023 Grant Capture Cohort** has been a success, providing information, support, and mentorship for those wishing to submit a bid for funding. For those thinking about their first submission or their next, this cohort will walk you through the process step by step and provide peer reviewing and advice. No funding bid is too small or too big.
- In November 2023, EDIN will be running a seminar on Equality, Diversity and Inclusion best practices in research.

## Art Display in Summertown

Catherine Ross and James Elliott - PhD by Fine Art Practice researchers at Oxford Brookes University - will be presenting their research at The North Wall, in Summertown from 26 March - 13 April 2024. They will be showing digitally manipulated films and photographs, photopolymer etchings, poetry, and sound walks/works.

All students are cordially invited. There will be a range of activities as part of the show.

**Researcher Career Pathways Event** Would you like to hear about the career journeys of researchers who have navigated the transition from PhD or fixed-term contract to careers both within and beyond academia? Join us on Friday 19 January 2024, 10:00 to 12:30 (via Zoom Webinar). This event is exclusively open to Research Students and Research-Only Staff. Secure your place by contacting [jcripps@brookes.ac.uk](mailto:jcripps@brookes.ac.uk)

# COMING UP

Research student training sessions to look out for this academic year:

## Graduate College Training Programme

All sessions can be booked through our [pages](#).

### Sessions in Semester 1 — 2023

- 30 min sessions on Open access, Copyright, Research Metrics and Research Data and ORCID and many more
- Research ethics process for PhD students
- Knowledge Exchange at Oxford Brookes
- Top ten tips for making the most of your research degree
- An Introduction to Consultancy, CPD & Contract Research
- Time Management: planning your research degree and keeping up momentum
- EDI Best Practice in Research Engagement
- Optimising Engagement through Social Media
- Tackling the writing up stage of the research degree
- Intellectual Property (IP) Training for Researchers
- Applying a Gender Dimension in Research

### Semester 2 - 2024

- Integrating Public Engagement into your Research

- Keeping up to date with your research
- Everything you need to know about KTPs
- Evaluating your public engagement activities
- Commercialising an Idea, StartUps & Spin-Outs
- Research ethics process for PhD students
- How to get the most out of conferences
- Managing your supervisor and building a good working relationship with your supervisory team
- Endnote training - Managing information overload
- Strategies for successful networking
- Research degrees – strategies for successful part-time study
- Research integrity at Brookes - a brief guide to general principles\*
- Managing your research records and your data management plan\*
- A step by step guide to publishing your research findings\*
- The Viva Examination\*

## TRAINING UPDATE

Some of the training sessions can be seen and/or download on-demand from the new Research Student Training Moodle course.

Those with a “\*” in the list above are available on demand, the other sessions need to be booked. More details about them and when they are running can be found in the [Research student training pages](#).

# And More.....

## Research Degrees Placement Opportunities Oxford Brookes University!



The Research Degrees Team, is excited to provide outstanding 1-3 months Placement opportunities for our Research Degrees Students.

This initiative will provide you with the chance to:

- Gain direct experience within industry and or other organisations, which does not have to be within your discipline.
- Develop new and existing transferable skills.
- Expand your network and professional horizons.

A work placement will give you the opportunity to develop skills such as:

- Interpersonal skills and working as part of a team.
- Liaise with staff in different roles, including senior staff.
- Organisational skills, including project and event management, making effective use of resources and working to specific deadlines.
- Engage with different audiences and interact with external stakeholders.
- Data management and analysis.
- IT skills (e.g. web-pages development) and many more.

Currently all our opportunities are fully funded by the university.

(Eligibility criteria apply - please contact [rdt-researchdegrees@brookes.ac.uk](mailto:rdt-researchdegrees@brookes.ac.uk) for more information)  
We are looking forward to hearing from you!

## Stress Management Workshop

**When:** 22 November 2023, 15:30 to 16:30

**Where:** John Henry Brookes Building, room TBC

This workshop is for all our postgraduate students.

There will be additional information later on at the [graduate college training](#) pages.



Photo by [Muha Ajjan](#) on [Unsplash](#)



# CONGRATULATIONS

Congratulations to all our research students on the successful outcome of their vivas and conferment of their degrees and awards for the period Sep22 – Aug23.

## **Oxford Brookes Business School**

### **Doctor of Philosophy**

#### **Emmanuel Asiedu**

‘Mobile Phone Adoption in Rural Ghana: Understanding How Technologies and Platforms Influence Farming Business Activities’

#### **Birgit den Outer**

‘Delivering more than security service: narratives of professional identity in the UK private security industry’

#### **Na Dou**

‘Community engagement in social entrepreneurship: Evidence from Kenya’

#### **Kuo Feng**

‘How commercial senior living facilities help enhance the social well-being of older customers through social activities: Evidence from China’

#### **Claudia Macaveiu**

‘The role of Partnerships in addressing Modern Slavery in the UK Event Sector: a narrative approach’

#### **Rajkamal Singh Mann**

‘The Effect of Agricultural Exports on Cropping Patterns/ Area Under Crops, Virtual Land Exports and Export-Oriented Displacement of Greenhouse Gas Emissions (GHGEs): 1961

-2013’

#### **Ba Huy Nguyen**

‘What are the effects of Globalization on Economic Growth and Inequality? An empirical global study’

#### **David Tache**

‘An examination of the explicit adoption of Corporate Social Responsibility by transnational tourism corporations in consideration socio-cultural impacts of tourism in the context of Kenya’

#### **Kamil Wyczynski**

‘Meanings of Retrogaming Consumption for “Millennial” and “Generation X” Men’

### **PhD by Published Work**

#### **Stephanie Jameson**

‘Hospitality undergraduates’ and graduates’ perceptions of careers in the international hospitality industry’

### **Doctor of Coaching & Mentoring**

#### **Elizabeth Crosse**

‘A Journey of Expertise: How Executive Coaches View Their Development Needs. A Q Methodological Study’

#### **Lindsay Foreman**

‘An Exploration of the Thoughts and Emotions Associated with Goal Attainment’

#### **Leonora Kitchin**

‘Executive coaches’ perceptions of the boundary and overlap between coaching and therapy: a study using Q methodology’

#### **Benita Mayhead**

‘Duty of care in coaching: from ethical frameworks to the development of the coach’

#### **Christine Vitzthum**

‘Exploring the approaches of coaches and organisational stakeholders in support of gender diversity’

## **Faculty of Health and Life Sciences**

### **Doctor of Philosophy**

#### **Victoria Backhouse**

‘Gene Regulation in Baculovirus-infected Insect Cells: Application in the Development of a Budded Virus Free Expression System’

#### **Emma Blakey**

‘What are the experiences and perceptions of unplanned readmissions to hospital within 30 days of discharge from the perspective of older people and their families within an English NHS context?’

### **Samuel Burden**

‘Left Ventricular Diastolic Function in Adolescents with Overweight and Obesity: The Moderating Influence of Physical Activity, Cardiorespiratory Fitness, and Metabolic Health’

### **Lauren Campbell**

‘Improving the Monitoring of Multiple Myeloma Patients Using Blood Based Markers of Disease’

### **Natalie Curtis**

‘Design and development of novel antagonists targeting Cdc20, a central regulator of the Anaphase-Promoting Complex/Cyclosome, for the treatment of cancer’

### **Edward Daly**

‘An investigation into mild traumatic brain injury identification, management, and mitigation’

### **Helena Garcia Castro**

‘ACME and SPLiT-seq: Quantitative and evolutionary single-cell transcriptomics in planarians’

### **Steven Hoff Williams**

‘A phylogeny of the genus *Gasteracantha* Sundevall, 1833 (Araneae, Araneidae) with an examination of sexually dimorphic characters in the subfamily *Gasteracanthinae*’

### **Michal Izydorczyk**

‘Insertionally polymorphic human endogenous retroviruses and their potential role in cancer’

### **Amjad Jarrar**

‘Effectiveness of digital education approaches to improve knowledge, attitude, and practice towards salt intake in a sample of UAE population’

### **Eleanor Mitchell**

‘Functional Characterisation of Aphid, *Myzus persicae*, Nicotinic Acetylcholine Receptors and Identification of a Novel Biogenic Amine-Gated Ion Channel from the Honey-bee, *Apis mellifera*’

### **Jamie Oliver**

‘A Novel Genomic Approach to Multiple Cancer Diagnostics Using Mutations in Blood Bound EV RNA’

### **PhD by Published Work**

#### **Daniel Cahen**

‘Taxonomy and Evolution of the Buckthorn Family (Rhamnaceae) in Southeast Asia’

### **Master of Philosophy**

#### **Zoe Taylor**

‘Medio-lateral gait stability and fall risk in older adults’

### **Faculty of Humanities and Social Sciences**

### **Doctor of Philosophy**

#### **Daniel Brown**

‘On Hume and Husserl: An Analysis of Phenomenology as a Development of the Humean Science of Man’

#### **Claire Cardinal**

‘Encounters in the forest: Social

and ecological dimensions of lemur hunting, habitat change and biodiversity conservation in south-east Madagascar’

### **Fabien D  z  que**

‘The influence of evolution on subjective well-being. Is evolution biasing the evaluation of our subjective well-being?’

### **Kavi Thakore**

‘Exploring Liberal Cosmopolitan Paths towards Global, Regional and National Financial Regulation (2008-2018): The Case of the European Union Financial Transactions Tax (EUFTT)’

### **PhD by Published Work**

#### **Eowyn Crisfield**

‘Context-driven research on and for multilingual learners: Developing and disseminating a research agenda for international education’

### **Lalita Gomez**

‘An Investigation into the Domestic and International Trade of Wildlife for Meat and Medicine in Southeast Asia’

### **Doctor of Education**

#### **Jane Fletcher**

‘Exploring the figured worlds of teachers and pupils in the primary mathematics classroom: Five illustrative cases’

### **Lynn McBain**

‘An investigation into the social integration of Young Adult Carers who are undergraduate students into Higher Education Institutions in England’

### **Jonathan Reid**

‘Teachers’ emotional work, support for their wellbeing and the role of compassion: A critical exploration’

### **Linda Rice**

‘Talking back: the dialogical identities of dyslexic students in the figured worlds of the university. A narrative enquiry’

### **Frances Tufnell**

‘Exploring Year 9 students’ perceptions: Influences on decisions to study GCSE Art and Design’

### **Master of Laws (Research)**

### **Nicholas Brown**

‘Why does family law treat female genital mutilation and circumcision differently?’

### **Master of Arts (Research)**

### **Miles Christie**

‘Functionalism and strange minds’

### **Catrin Street-Mattox**

‘A Defence of Szasz’s ‘The Myth of Mental Illness’ and Its Relevance to Modern Mental Healthcare’

## **Faculty of Technology, Design & Environment**

### **Doctor of Philosophy**

### **Anu Bala**

‘Design, Analysis and Testing of Efficient Memristive Neural Networks’

### **Habibullah Adil**

‘Characterisation of a New

Nanostructured Aluminium Alloy and Piston Design for Internal Combustion Engines’

### **Shadi Eltanani**

‘Development of Machine Learning Models to Detect Dynamic Disturbances in Human Gait’

### **Geoffrey Geer**

‘Merging 20th Century Art Music and Pre-recorded Sound: 17 Pieces’

### **Serkan Gunay**

‘Heritage of the ‘Other’: Future of Lost Architectural Heritage’

### **Katrin Hattenhauer**

“Voices of Courage” – What makes people courageous? ‘

### **Mohamed Idries**

‘Navigational algorithms evaluation and benchmarking’

### **Aline Moreira Fernandes Barata**

‘The role of participation in mobility planning in the Global South: Spaces and meanings of participation in Rio de Janeiro and Porto Alegre, Brazil’

### **Jonida Murataj**

‘Investigating the Most Effective Energy Retrofitting Strategies for Improving Comfort and Energy Use in Residential Buildings in Albania’

### **Luka Oreskovic**

‘Evaluating the real energy and environmental performance of an eco-housing development in England’

### **David Planden**

‘Improvements on physics-informed models for lithium batteries’

### **Vera Polido Baeta**

‘The Right to the City in Disputed Sites: Urban Redevelopment and the Street Economy Space Nexus in Maputo, Mozambique’

### **Abhinav Priyadarshi**

‘Influence of ultrasonic cavitation treatment on fragmentation and de-agglomeration of primary intermetallics and oxides formed in Al alloys’

### **Zixuan Ran**

‘Residual Stress Determination in Advanced Silicon Carbide Fibre Reinforced Aluminium Matrix Composites’

### **Margaret Socha**

‘Legacy and Land: The role of legacy motive in improving the quality of housing developments in the UK’

### **Master of Science (Research)**

### **Godwin Benedict**

‘CFD Analysis for Optimization of Vertical Axis Wind Turbine Farms’

### **Jack Waghorne**

‘Statistical characterisation of architectural parameters in heterogeneous, high-porosity media and their influence on the fluid properties’